



World
Organisation
for Animal
Health

Organisation
mondiale
de la santé
animale

Organización
Mundial
de Sanidad
Animal

Strengthening Science–Policy Interfaces for One Health in North Africa

Tunis, Tunisia

5–7 May 2026

FUNDED BY



FACILITATED BY



Science-Policy Interface in OH

2- Introduction



World
Organisation
for Animal
Health

Organisation
mondiale
de la santé
animale

Organización
Mundial
de Sanidad
Animal



In your opinion, what is an SPI mechanism?

Can you give some examples that come to mind?

What do you consider a SPI mechanism to be?

Can you give some examples that come to mind?





Definition and objectives

1. Definition: The science-policy interface (SPI) refers to the structured mechanisms that enable the co-production, translation and use of scientific data in policy-making.

2. Objectives:

- To ensure that scientific knowledge is effectively utilised in policy-making
- Enable more effective policies
- Strengthen governance



Key responses to the questionnaire

22 replies

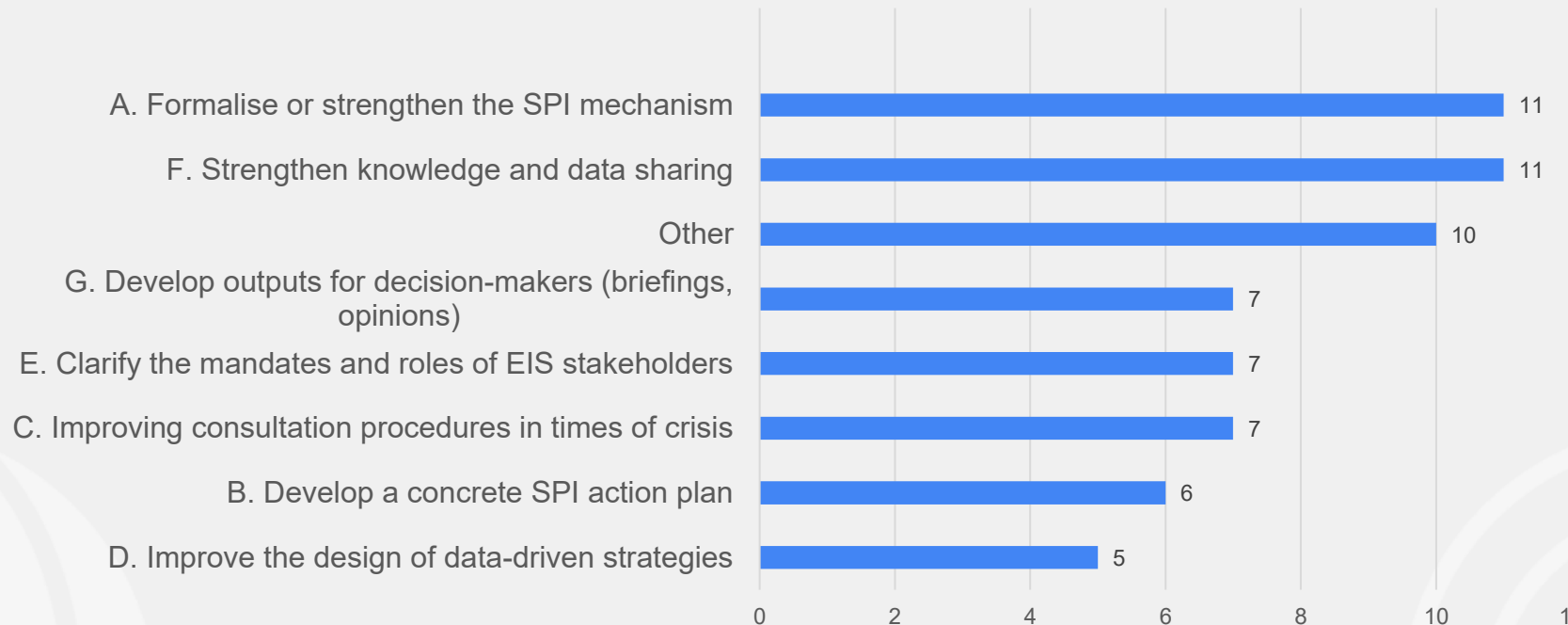
- Human health: 7
- Animal health: 7
- Environment: 8

Profile of
respondents

Policy / Decision-making: 6
Coordination platform: 11
Technical implementation / Programme: 15
Scientific / Research: 3
Technical / Laboratory: 3
Monitoring / Risk assessment: 11
Other: 3



Key expectations expressed





Key SPI mechanisms

1- Background:

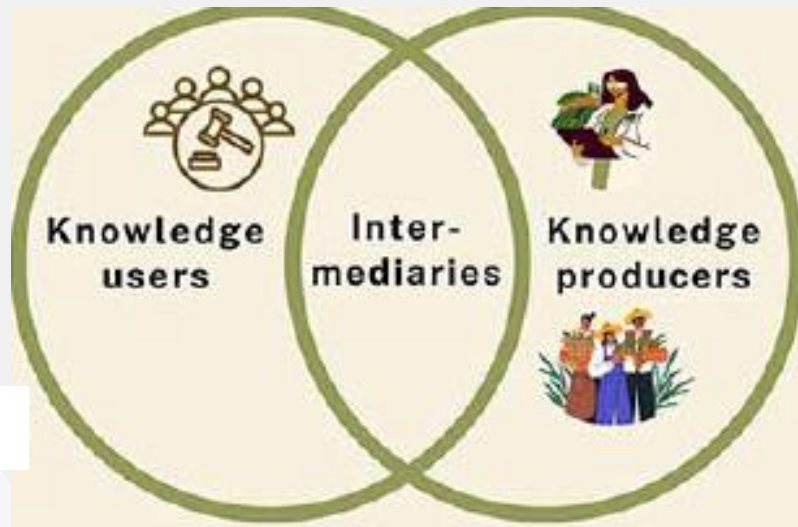
- Peacetime
 - ⇒ data collection to define/review strategies
 - ⇒ steering research activities by prioritising key issues
- Times of crisis
 - ⇒ decision-making to manage the crisis

2- Different SPI models

- Policy-oriented model => focused on decision-makers
- Data-production-oriented model => focused on evidence providers
- Integrated model => balanced interaction between users and evidence providers



The three main stakeholders

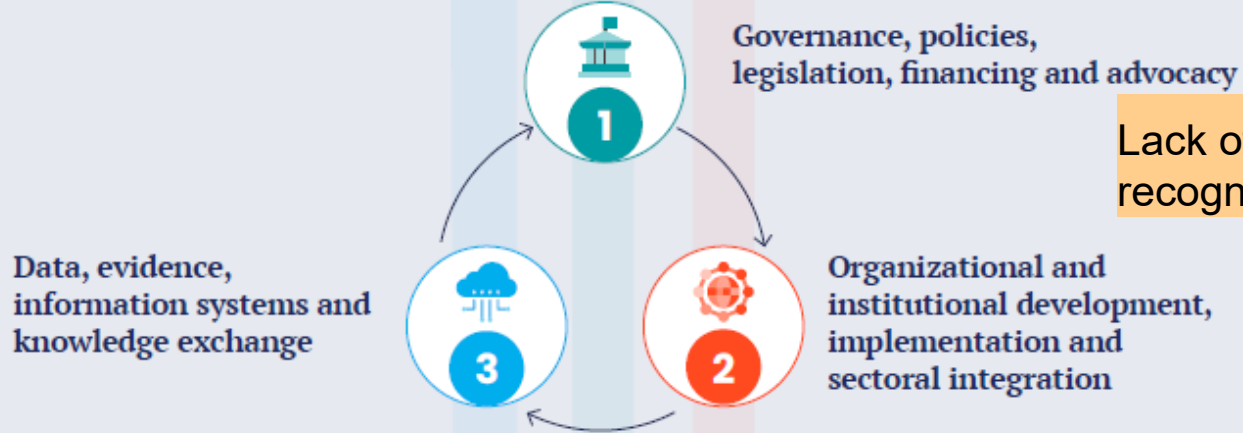


- **Knowledge producers** => researchers, laboratories, technical institutes, monitoring systems, experts and other knowledge holders.
- **Intermediaries** include individuals or organisations that help disseminate and translate knowledge: technical secretariats, platforms, think tanks, facilitators, experts in science communication, or coordination units.
- **Knowledge users** => public decision-makers, managers, agency heads, coordinating authorities and other stakeholders required to make decisions, weigh up options or allocate resources.



The three components of the theory of change as applied to SPI

The three pathways of the theory of change



Lack of formalised, recognised SPI...

Lack of suitable data, or data not available

Disconnection between data providers and decision-makers

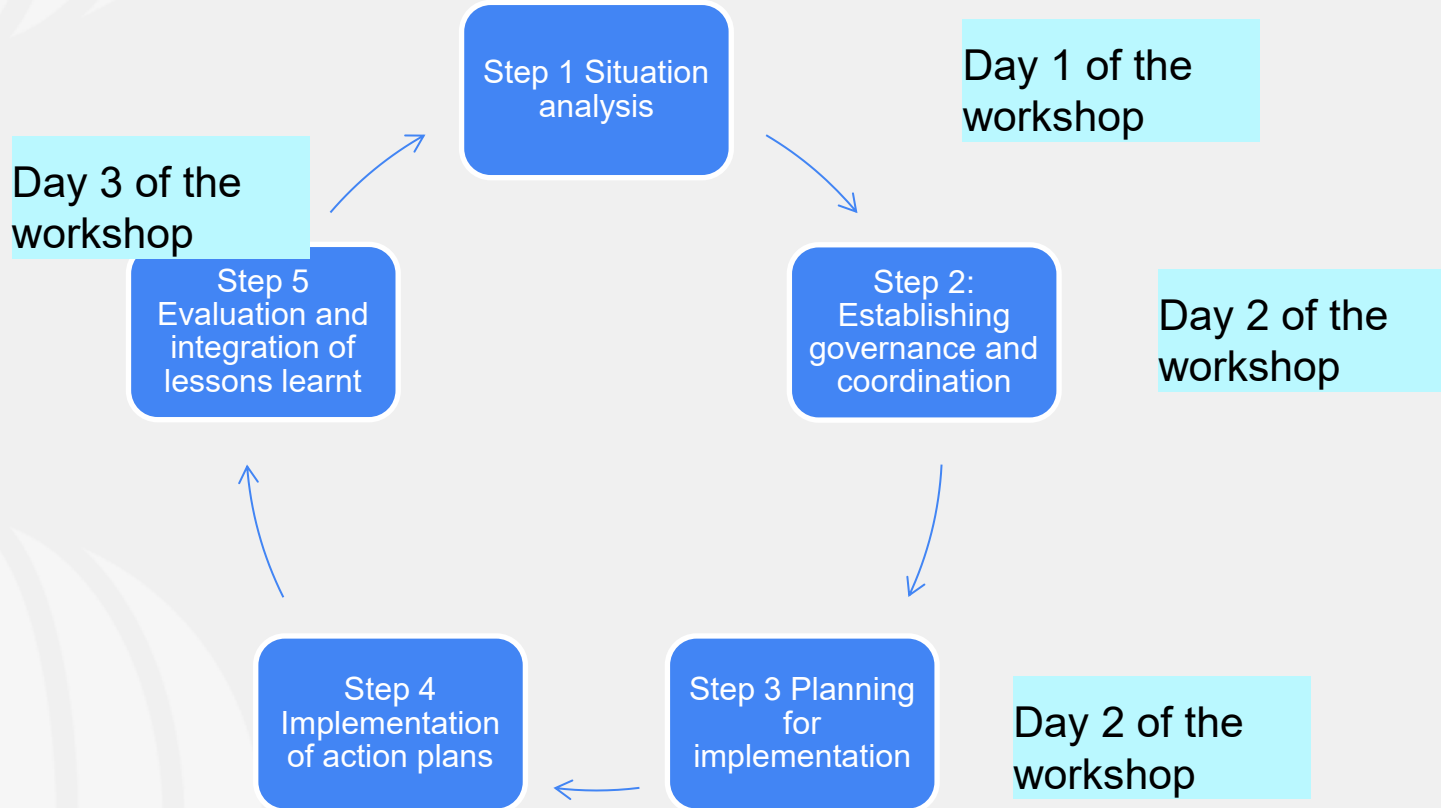


Principles for developing SPI

- Designing solutions tailored to each country and its needs
- Prioritise a step-by-step approach
- Strengthen the use of data for decision-making
- Apply the principles of equity, parity and transdisciplinarity
- Clarify the responsibilities of stakeholders
- Measuring progress for continuous improvement



The step-by-step approach



Merci

Thank you

www.woah.org woah@woah.org



World
Organisation
for Animal
Health

Organisation
mondiale
de la santé
animale

Organización
Mundial
de Sanidad
Animal

FUNDED BY



FACILITATED BY

