

# Dog Ecology and Population in Rabies Control

---

## Why it Matters....

*Presented by: Julie Corfmat, RVN, BSc (Hons), MSc  
Director of Animal Welfare, Mission Rabies India*



World Organisation  
for Animal Health  
Founded as OIE



MISSION  
RABIES



WVS



# Introduction



**Rabies is a fatal viral disease**



**99% cases linked to dog bites**



**Mass Dog Vaccination (MDV)  
is key**



**Ecology understanding is  
essential**







## Population Size & Density

How many? How crowded?



## Ownership Status

Owned & Stray Dogs



## Reproduction & Turnover

Births & Deaths



## Movement & Behavior

Roaming & Social Patterns



## Human Interaction

Feeding & Culture



1



# Why Population Data Matters

---



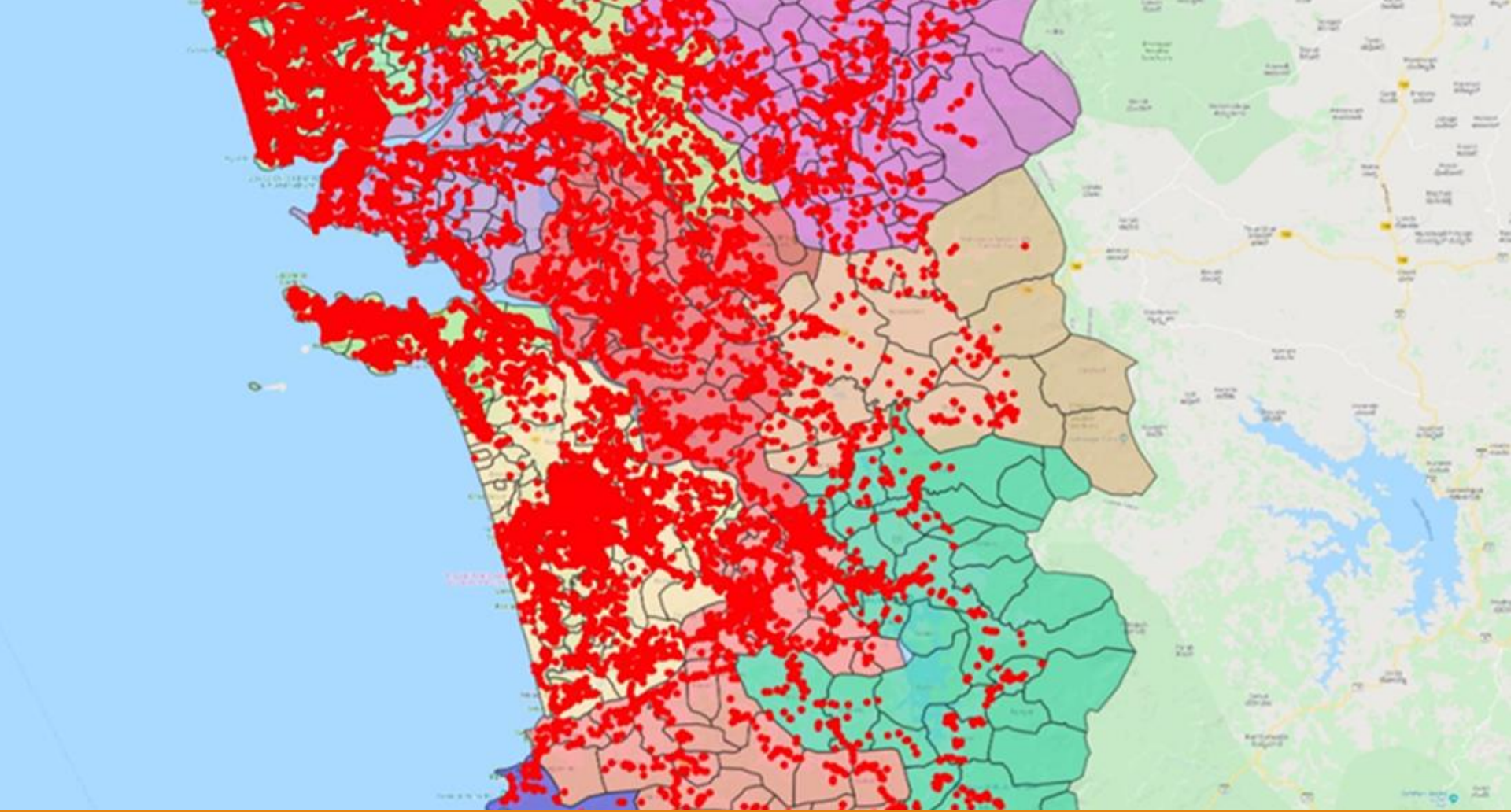
**Accurate dog  
estimates**



**Efficient planning  
and vaccine use**



**Avoid under/over  
vaccination**



# Vaccination Coverage

2







3





## Free-Roaming Dogs







## Spatial Distribution



4





## Population Turnover



5





## Human Factors

4	5	6	7	8	9	10
11	12	13	14	15	16	17
18	19	20	21	22	23	24
25	26	27	28	29	30	31
32	33	34	35	36	37	38
39	40	41	42	43	44	45
46	47	48	49	50	51	52
53	54	55	56	57	58	59
60	61	62	63	64	65	66
67	68	69	70	71	72	73
74	75	76	77	78	79	80
81	82	83	84	85	86	87
88	89	90	91	92	93	94
95	96	97	98	99	100	

**National Anthem**

Oh! God bless our land of Malawi  
Keep it a land of peace  
Put down each and every enemy, hunger, disease, envy  
Join together, all our hearts, as one, that will be  
free from fear  
Bless our leader, each and everyone and mother Malawi



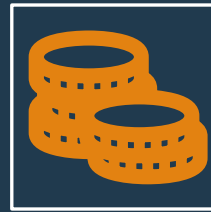


# Dog Ecology Benefits

---



**Better planning**



**Cost-effective**



**Sustainable  
control**

# Conclusion







Thank you!