

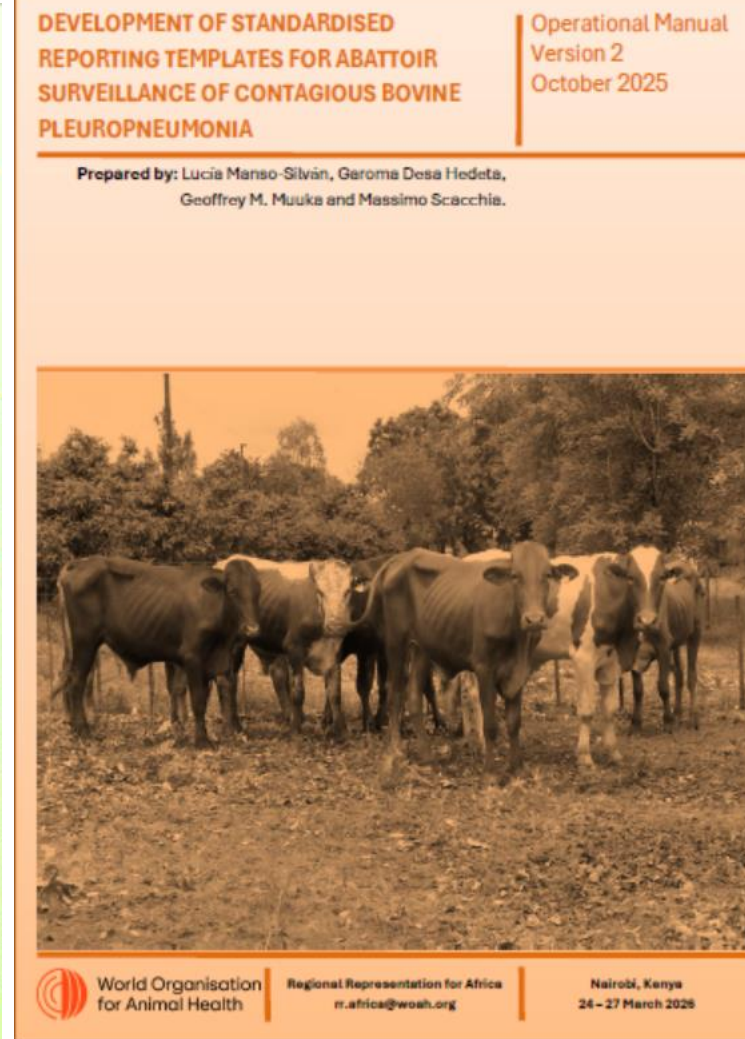
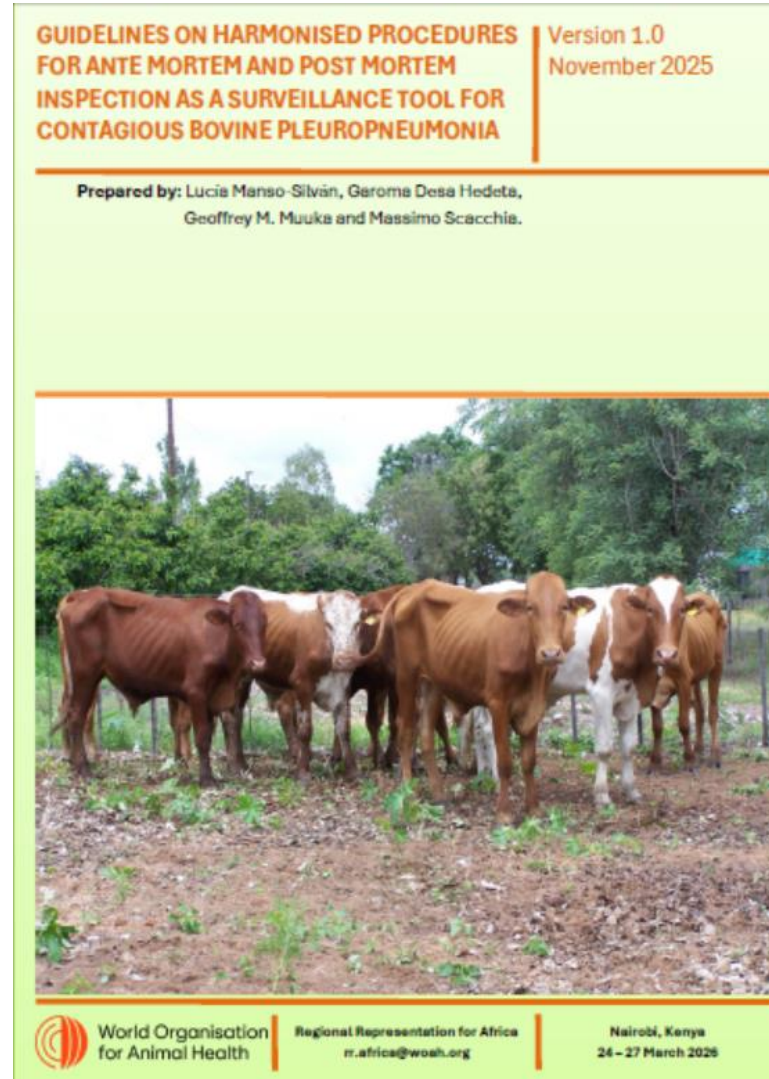
Regional Training Course on Abattoir Surveillance for Contagious Bovine Pleuropneumonia (CBPP)

24 – 27 March 2026, Nairobi, Kenya



Promote effective abattoir-based surveillance

- Preferred tool for detecting CBPP
- Both endemic and disease-free countries
- **Strengthen national capacities**
- Implement harmonised procedures for CBPP slaughterhouse surveillance & reporting



A. Strengthen Technical Capacity

- Equip veterinary professionals, meat inspectors, and surveillance officers
 - Skills to conduct **accurate** ante-mortem and post-mortem **inspections** for CBPP

Enhance capacity to

- **Identify** pathological lesions,
- Conduct differential diagnosis, &
- Collect appropriate samples

B. Promote Harmonised Surveillance Practices

- Introduce and reinforce standardised abattoir surveillance procedures across countries
- Enable consistency and comparability of data for regional and international reporting.

C. Improve Reporting and Data Quality

- Train on **standardised data collection and reporting templates**
- Timely and accurate submission to WOA (WAHIS), and national systems.



D. Build Facilitation & Knowledge-Transfer Skills

- Equipped as **training-of-trainers (ToT)**
- **Facilitation skills** to replicate the training nationally.

A. Support Early Detection & Disease Intelligence

- Strengthen the ability to **detect CBPP outbreaks early**
- **Using** surveillance information and epidemiological indicators
- Enhance understanding of **CBPP epidemiology** and transmission dynamics.

B. Introduce and Promote Innovative Digital Tools

- Build capacity to use e-tools & remote assistance to expand CBPP surveillance coverage.

C. Promote Evidence-Based Decision-Making

- Use surveillance data to **inform national policies, risk-based interventions, and resource allocation.**

D. Encourage Investment in Surveillance Infrastructure

- Motivated to **upgrade abattoir inspection infrastructure**, reporting systems, and laboratory linkages.

E. Promote Transparent Reporting

- Reinforce the importance of **transparent reporting of CBPP cases and vaccination data** to national, regional, and international platforms.

STRATEGIC LONG-TERM IMPACT

Early Detection and Intelligence

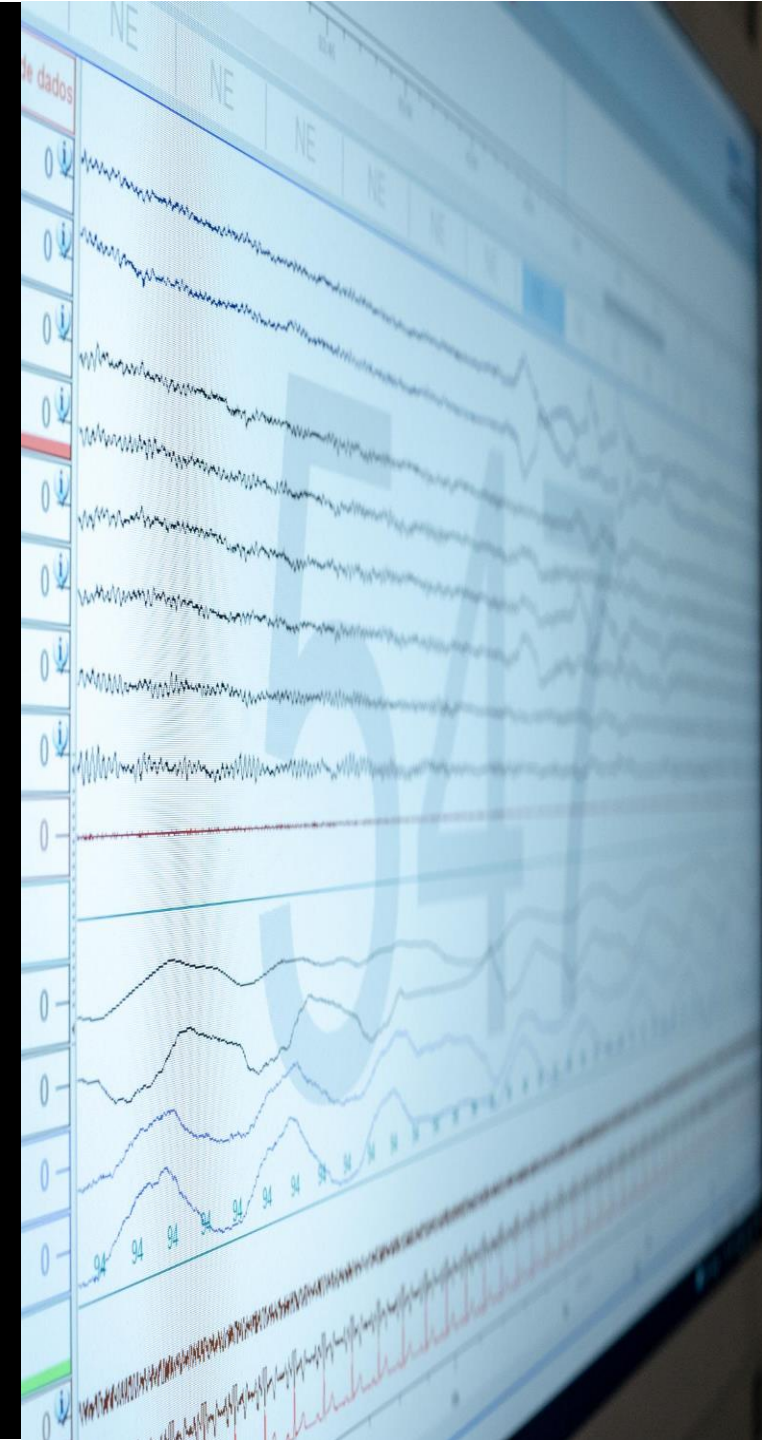
Strengthens disease intelligence frameworks and trend analysis for timely, coordinated responses.

Regional Collaboration

Enables cross-border information sharing and collective strategies for CBPP control.

Evidence-Based Decisions and Investment

Guides policy, resourcing, and risk-based interventions; reinforces labs, traceability, and transparent reporting to WOH and AU systems.





DIGITAL SURVEILLANCE TOOLS



DIGITAL SURVEILLANCE TOOLS

Real-time field data

Mobile apps enable remote submission and faster CBPP surveillance reporting.

Tele-diagnosis support

Smartphone pathology images enable expert review when labs are distant.

Streamlined e-reporting

Digital platforms connect abattoirs, field teams, labs, and authorities.

Participatory insights

Digital tools capture community signals in pastoral and informal settings.

Regional Training Course on Abattoir Surveillance for Contagious Bovine Pleuropneumonia (CBPP)

24 – 27 March 2026, Nairobi, Kenya



AGENDA

TRAINING OBJECTIVES REVIEW

Strengthen technical capacity for ante-mortem and post-mortem CBPP detection

Promote harmonised abattoir surveillance procedures

Improve reporting quality and use of standardised templates

Equip trainees with facilitation/ToT skills

Support early detection & disease intelligence

Build capacity to use digital surveillance tools

Enhance regional collaboration & data sharing

Enable evidence-based national decision-making

Encourage infrastructure upgrading for abattoir surveillance

Strengthen transparent national, regional & global reporting for accurate ante-mortem and post-mortem inspection in field conditions

Strengthen skills for accurate ante-mortem and post-mortem inspection in field conditions



QUESTIONS?

THANK YOU! MERCI!

