



World Organisation
for Animal Health



Regional Training Seminar for WOAH National Focal Points for Veterinary Laboratories (cycle III)

8 - 10 July 2025, Gaborone, Botswana



Co-funded by
the European Union



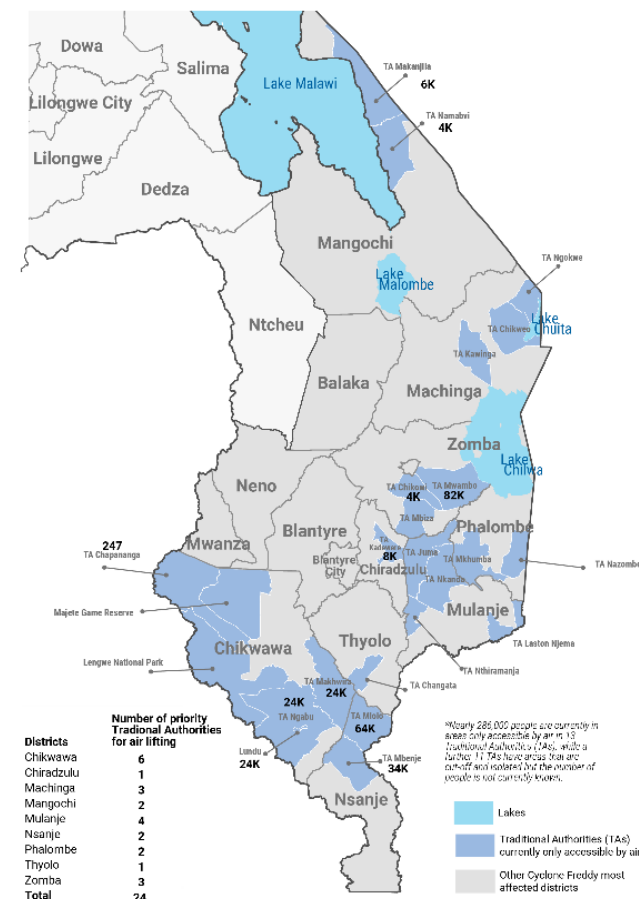
Counter Proliferation
& Arms Control Centre

CYCLONE FREDDY IMPACTS ON LIVESTOCK AND VETERINARY LABORATORY RESPONSE IN MALAWI

Dr. MacDonald Chisale
Malawi Veterinary Laboratory Focal Point

INTRODUCTION

- Cyclone Freddy's impact on Malawi was devastating, resulting in widespread flooding, mudslides, displacement, and significant damage to infrastructure.
- The devastating effects were felt in the **Blantyre City, Mulanje, Chiradzulu, Thyolo, Zomba, Nsanje and Chikwawa** destroying entire villages, bridges, schools, hospitals, border posts, farmer fields and livestock.
- Cyclone Freddy significantly impacted livelihoods, with over **300,500 livestock dead** and nearly **91,000 injured**, while over 204,800 hectares of land was submerged or washed away.



IMPACT ON LIVESTOCK

- The losses and damages suffered by farmers have been substantial, ranging from missing livestock due to flooding to deaths.
- Other impacts include; scarcity of livestock feed, destruction of veterinary service delivery infrastructures including roads.
 - Sample collection and transportation was affected.



Site of a kraal in Chikwawa district, where all 32 goats were washed away

IMPACT ON LIVESTOCK

- Prolonged wetness increased the risk of wounds on animals' hooves, and the risk of internal parasites.
 - Animals were immuno-suppressed due to the psychological and physiological stress.
- There was generally an increased risk of vector borne, bacterial, and viral diseases.
- Clinically livestock suffered from;
 - Wounds on their legs after standing in water for prolonged periods.
 - The cattle were likely suffering from high worm burdens.
 - High prevalence of vector-borne diseases like LSD

SUMMARY OF THE IMPACTS

SPECIES	DEAD/ MISISNG		INJURED
	SVADD	BLADD	
Cattle	58	2,707	5,504
Goats	4,190	14,341	9,959
Pigs	848	20,249	12,389
Poultry	20,403	288,722	36,501
Sheep	21	218	386
Dogs	-	1,096	1,096
Cats	-	2,353	1,019

INTERVENTIONS

- Laboratory personnel and other key stakeholders went to the affected sites to collect samples and assisted the injured/diseased animals.
 - Laboratory results indicated heavy worm infestation.
- The interventions included;
 - Deworming
 - Wound management
 - Vaccinations against ND, LSD, Rabies
 - Ecto-parasites control





Wound Management



Regional Training Seminar for
Focal Points for Veterinary Lab
8 - 10 July 2025, Gaborone, Botswana

Vaccinations



Acaricide
application

CONCLUSION

- Cyclone Freddy's impacts on animal laboratory services delivery was significant;
1. Infrastructure damage
 - Building and facilities
 - Roads and Transportation system
 2. Increased veterinary needs
 - Animal injuries and diseases
 - Disease outbreaks
 3. Challenges in providing laboratory services
 - Accessibility
 - Equipment and Supplies
 - Personnel



LESSONS LEARNT

- There is need for multi-sectoral collaboration to respond to disasters.
- Lobby for emergency budget in case of disasters.
- Ask for extra staff and resources.
- There is need for having enough rapid test kits and other reagents and consumables.

ACKNOWLEDGEMENTS

- Mission Rabies (MR)
- Worldwide Veterinary Service (WVS)
- Action for Protection of Animals Africa (APAA)





Thank you very much
for your attention!!

Zikomo Kwambiri!!