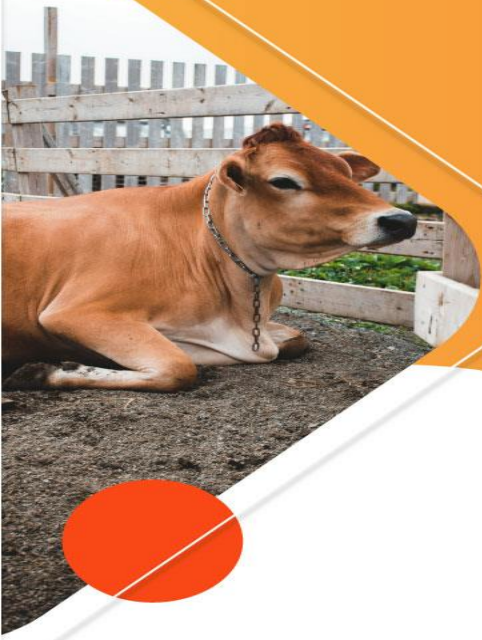


Regional Training Seminar for WOAH National Focal Points for Veterinary Laboratories (cycle III)

8 - 10 July 2025, Gaborone, Botswana



Biological risk management in conflict zones



Co-funded by
the European Union



Counter Proliferation
& Arms Control Centre

Hassen Belay, AU-PANVAC



Co-funded by
the European Union



Counter Proliferation
& Arms Control Centre

- ❑ Introduction to AU-PANVAC
- ❑ Biorisk Management at AU-PANVAC
- ❑ AU-PANVAC Experience of Biorisk Management in conflict zones
 - Security incidents near AU-PANVAC
 - AU-PANVAC's Response Measures
 - Lessons Learned
- ❑ Conclusion

MISSION:

“To promote the use of **GOOD QUALITY VACCINES** and **DIAGNOSTIC REAGENTS** for the control, eradication and surveillance of animal diseases in Africa.”

ACTIVITIES:

- ☐ **INTERNATIONAL INDEPENDENT QUALITY CONTROL** of all veterinary vaccines produced or imported into Africa.
- ☐ **PRODUCTION AND DISTRIBUTION OF DIAGNOSTIC REAGENTS** for surveillance of animal diseases
- ☐ **TRAINING AND TECHNOLOGY TRANSFER** in vet. vaccine production

- ❑ **Auditing and Certification of vaccine manufacturing facilities** in collaboration with National Regulatory Authorities in Africa: Endorsed by the AU Executive Council at the 44th Ordinary Session (2024 AU Summit), as outlined in Decision EX.CL/Dec.1234(XLIV)
- ❑ Certification of **Veterinary Medicines**



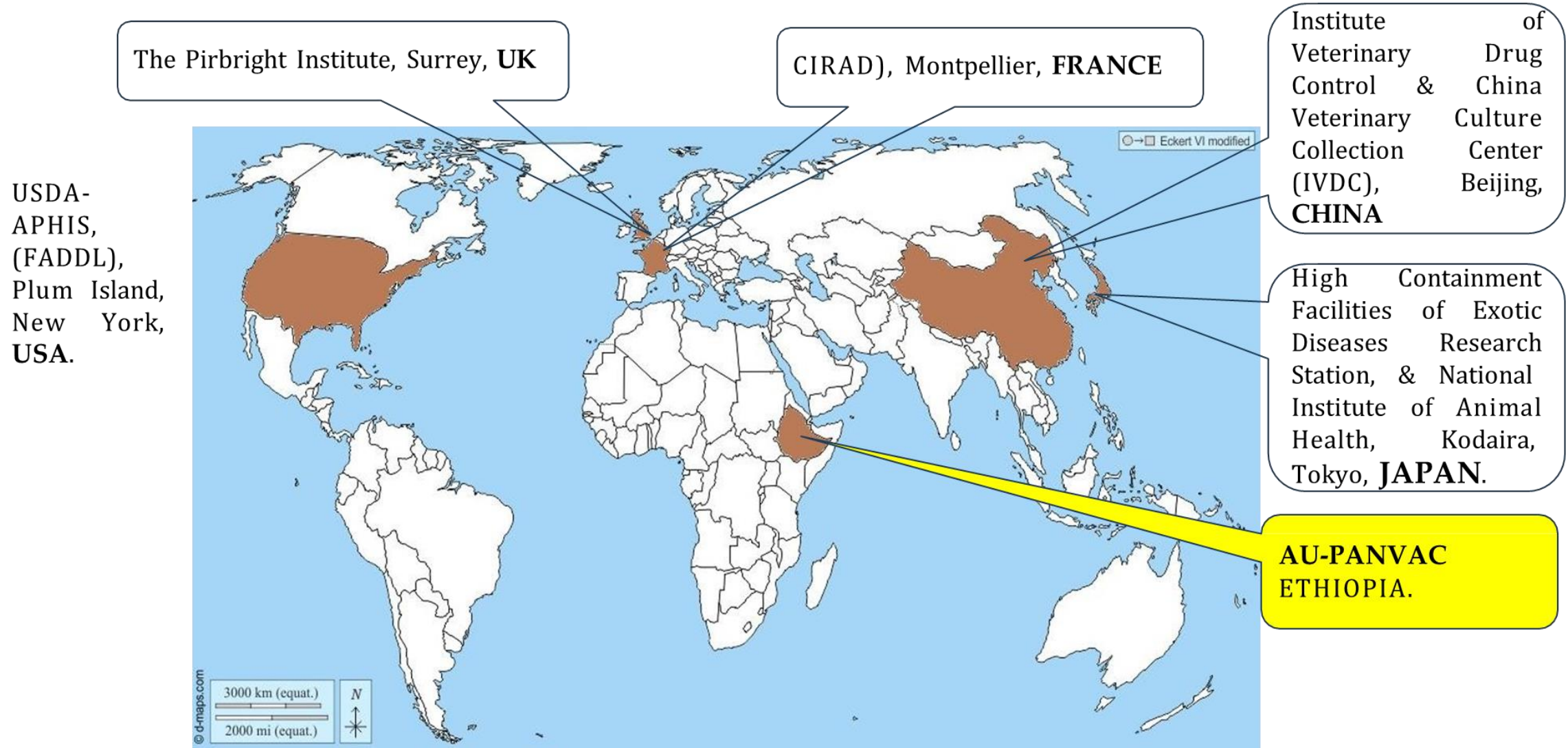
- **Collaborating Center For Quality Control of Veterinary Vaccine** (WOAH Gen. Assembly Resolution 32, Paris, May 2013)

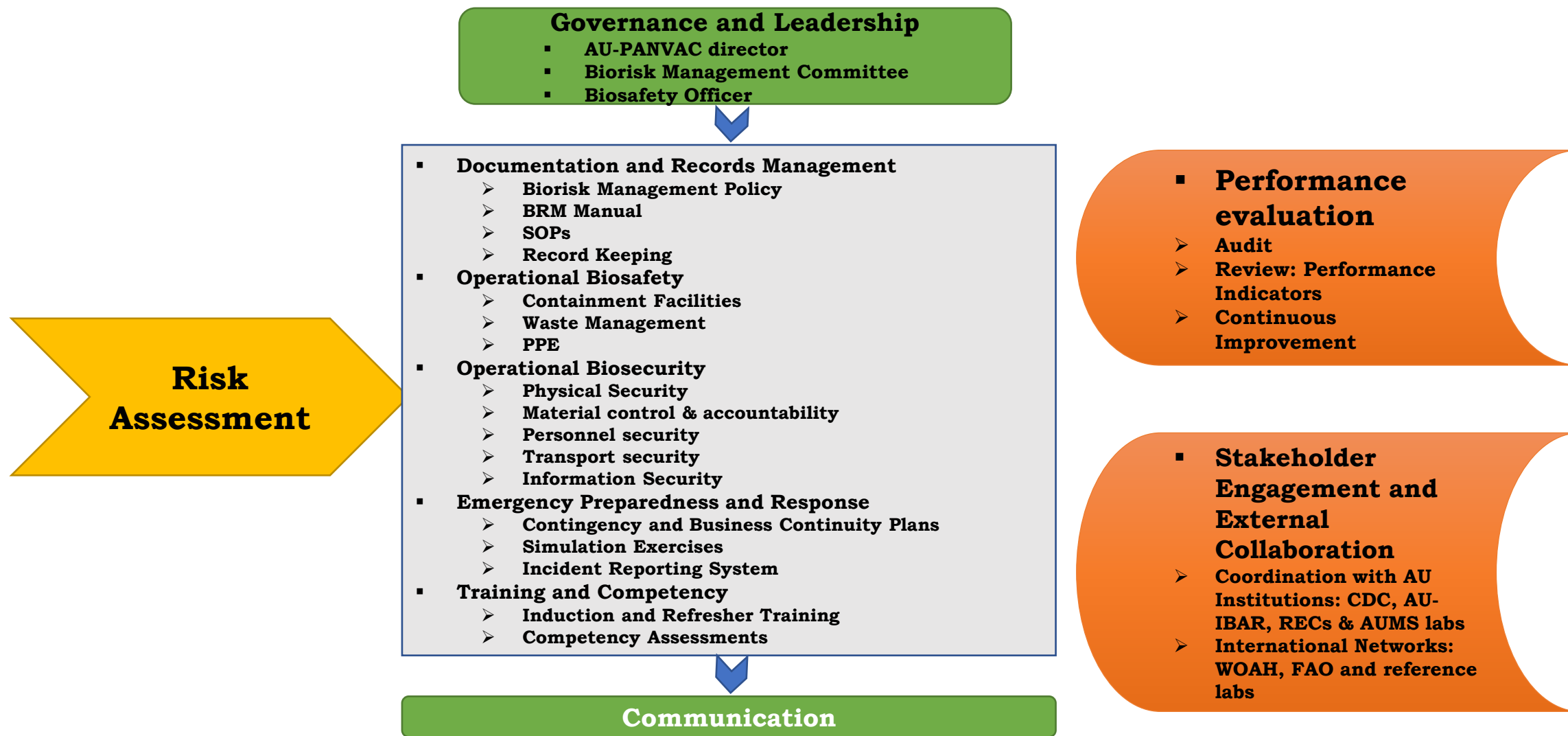


- **Reference Centre for Technical Assistance in Quality Control of Veterinary Vaccine** (11th May, FAO Rome, 2015)



- **Rinderpest Holding Facilities (to maintain Africa Free from Rinderpest)**





- ❑ Conflict zones are high-risk environments for laboratories handling biological agents
- ❑ The risks include:
 - Staff insecurity
 - Laboratory insecurity
 - Cold chain interruptions
 - Disruption of operations
 - Disruption of supply chain and logistics
 - Communication and coordination blackout



AU-PANVAC is located in Bishoftu City (50 km from the capital Addis Ababa), near to Airforce base (advantage)

❑ **Irreecha cultural festival tragedy:** 2nd October 2016

- Followed by mass protest until 2018
- Resulted in internet shutdown

❑ **Security Confrontation at activist Jawar Mohammed's Residence:**
October 22nd – 23rd, 2019

- Mass protest following the incident in Addis Ababa & across Oromia
- Internet shutdown

❑ **Assassination of Oromo singer, Hachalu Hundessa:** 29th June 2020

- Protests erupted in Addis Ababa and across Oromia region
- Internet shutdown

❑ **Outbreak of Northern Ethiopia Conflict:** November 2020

- The war advanced south through North Shewa towns to Debre Birhan, marking a widening front toward the capital
- Created uncertainties with diplomatic community leaving the country

❑ **Armed attack on Cheleleka police station (Bishoftu):** 14th May 2023

- Resulted in the temporary closure of nearby road

- ☐ Convened emergency risk management team
- ☐ Assessed threat to personnel, materials & infrastructure
- ☐ Reviewed emergency SOPs and access protocols

Assessed risk level	Description of risk level	Actions
Rare	If an incident were to occur, there would be rare that an injury would result	Acceptable/tolerable risk No further actions are needed
Low	If an incident were to occur, there would be little likelihood that an injury would result	Undertake the activity with the existing controls in place
Medium	If an incident were to occur, there would be some chance that an injury requiring First Aid would result	Additional controls are advised
High	If an incident were to occur, it would be likely that an injury requiring medical treatment would result	Controls will need to be in place before activity is undertaken
Extreme	If an incident were to occur, it would be likely that a permanent, debilitating injury or death would result	Consider alternatives to doing the activity. Significant control measures will need to be implemented to ensure safety

☐ Strengthened physical security



❑ Remote monitoring using CCTV



Motion sensor



Training of security guards



Simulation Exercises



UPS for BSL-3



- ☐ Campus Stand-by Generator
- ☐ Dedicated generator for BSL-3



- ☐ Technician: available in the campus, 24/7

❑ Collaboration with Security Partners

- Coordinated with AU Security and local security authorities

❑ Evacuation Readiness Assessment

- Reviewed emergency evacuation routes and assembly points
- Tested communication channels

❑ Staff Safety Protocols

- Safety briefings provided to staff
- Emergency contact lists updated

☐ Safeguarding Continuity of Operations

- Prioritized critical activities
 - cold chain monitoring
 - Animal follow-ups
 - Sensitive laboratory operations
- Remote communication setup with AU & local security
 - Local key staff identified to update on ongoing security situation
 - AU-PANVAC liases with Bishoftu police and seek security advice from AUC security
- Local staff on-site with various transportation plan (private, public, pedestrian)

- ❑ Preparedness must include non-traditional threats
- ❑ Relationships with local stakeholders are vital
- ❑ Contingency plan is crucial
- ❑ Training staff for crisis scenarios is essential

- ☐ Review your lab's conflict vulnerability and contingency plan
- ☐ Invest in minimal essential infrastructure
- ☐ Build partnerships with key stakeholders (security)
- ☐ Establish a minimal-function emergency operations plan
- ☐ Train staff on conflict and emergency response scenarios
- ☐ Monitor local security dynamics regularly



AU-PANVAC!
ADDING VALUE TO ANIMAL HEALTH AND HUMAN LIVES!!

Thank you 

WWW.AUPANVAC.ORG