



DEPARTMENT OF CIVIL &
ENVIRONMENTAL ENGINEERING



World Organisation
for Animal Health
Founded in 1924

PROVNA: Data Curation and RVF Risk Model

Dr. Assaf Anyamba, Heidi Tubbs

WAOH Workshop on PROVNA Project and Foresight
July 3-4, 2024
Lisbon, Portugal



Climate and Geospatial Data

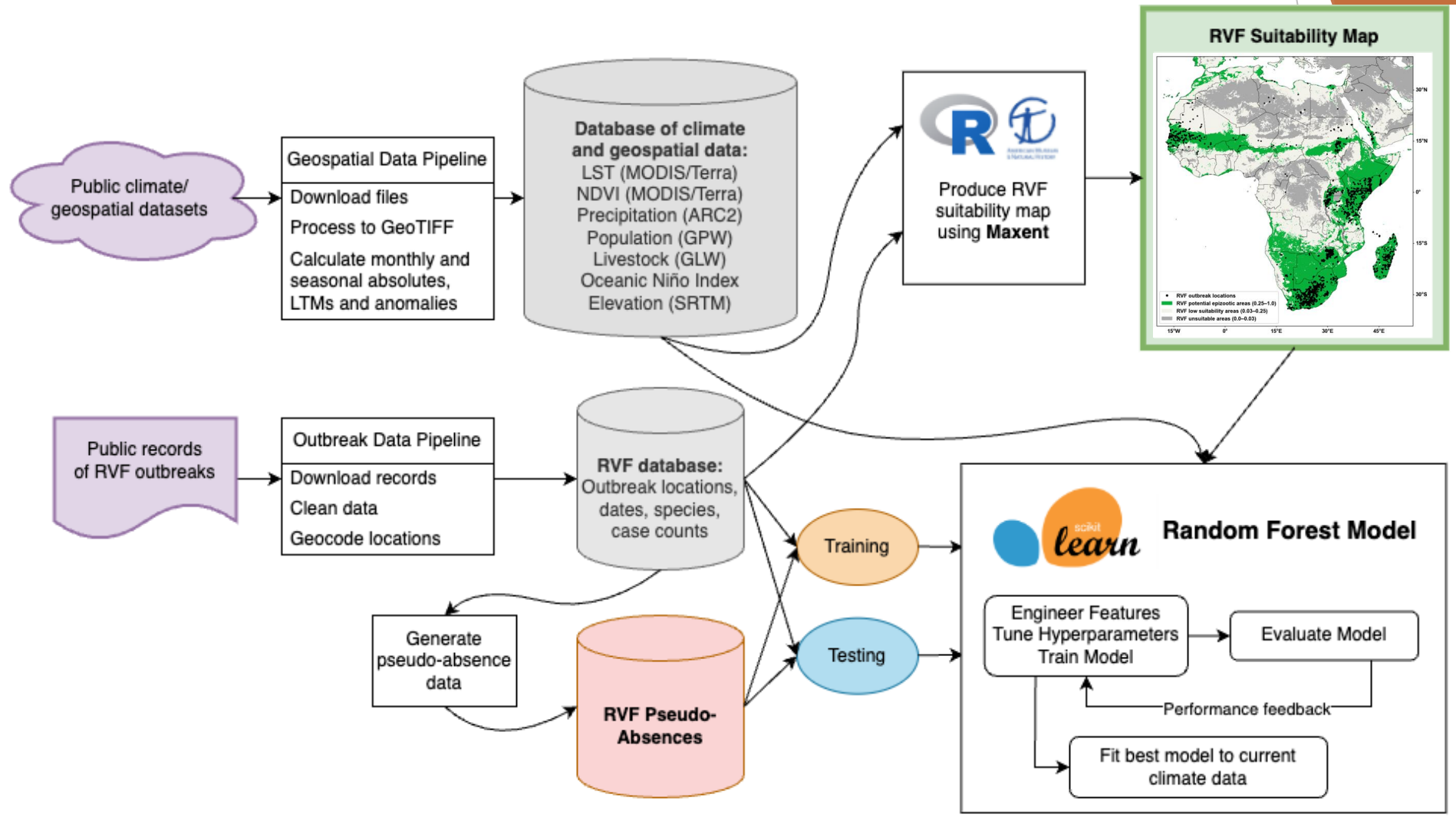
Dynamic

- ▶ Land surface temperature (LST)
 - ▶ MODIS/Terra (MOD11C3)
 - ▶ Monthly, 0.05 degree resolution
 - ▶ 2000–2024
- ▶ Normalized difference vegetation index (NDVI)
 - ▶ MODIS/Terra (MOD13C2)
 - ▶ Monthly, 0.05 degree resolution
 - ▶ 2000–2024
- ▶ Precipitation
 - ▶ Africa Rainfall Climatology 2 (ARC2)
 - ▶ Daily, 0.1 degree resolution
 - ▶ 1983–2024
- ▶ Oceanic Niño Index (ONI)

Baseline

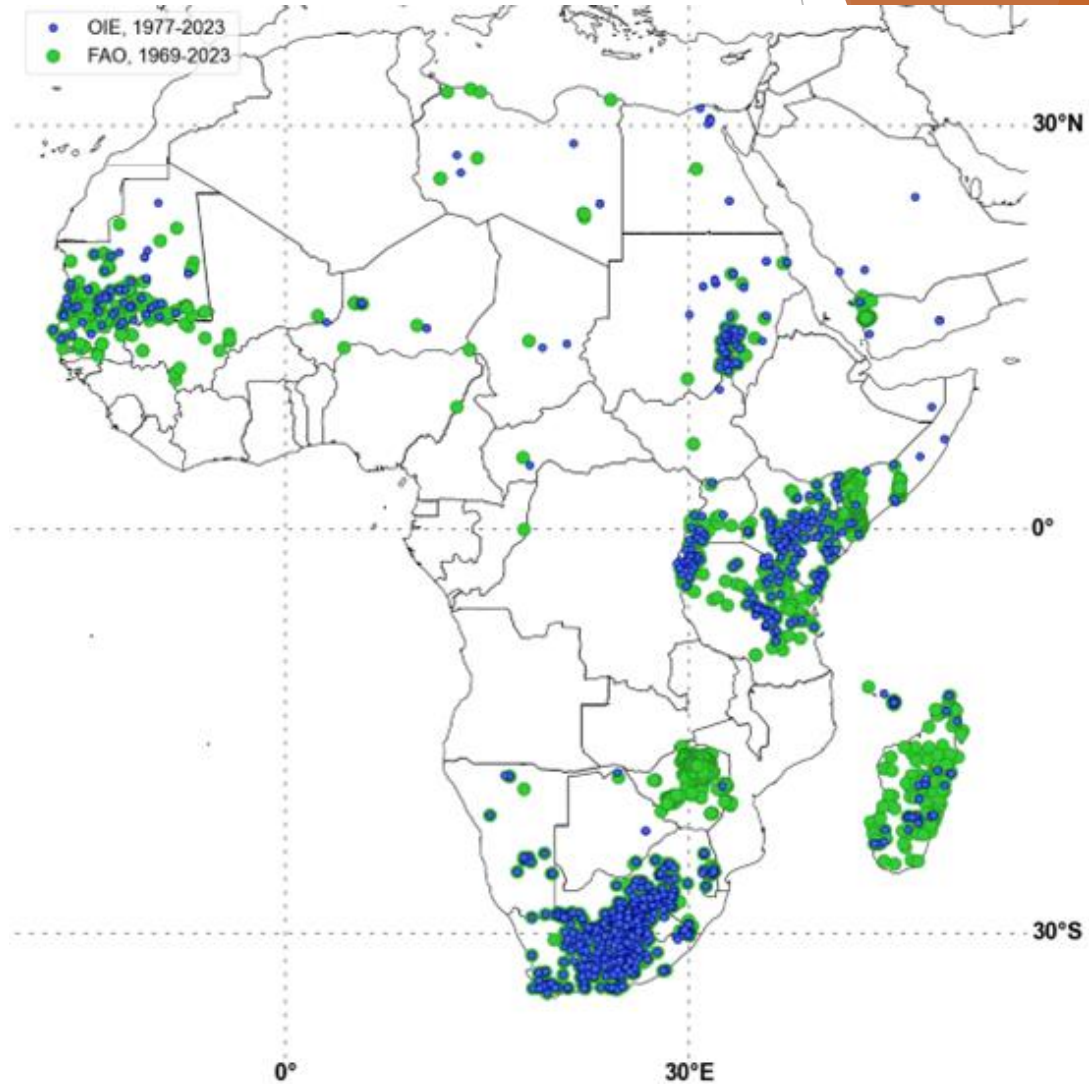
- ▶ GPW Human Population Density
 - ▶ 5-yearly, 2.5minute (0.04 degree) resolution
 - ▶ 2000–2020
- ▶ GLW Livestock Population Density
 - ▶ 1 km (0.01 degree) resolution
- ▶ SRTM Elevation
 - ▶ 30 m resolution

RVF Risk Model Implementation



RVF Historical Outbreak Data

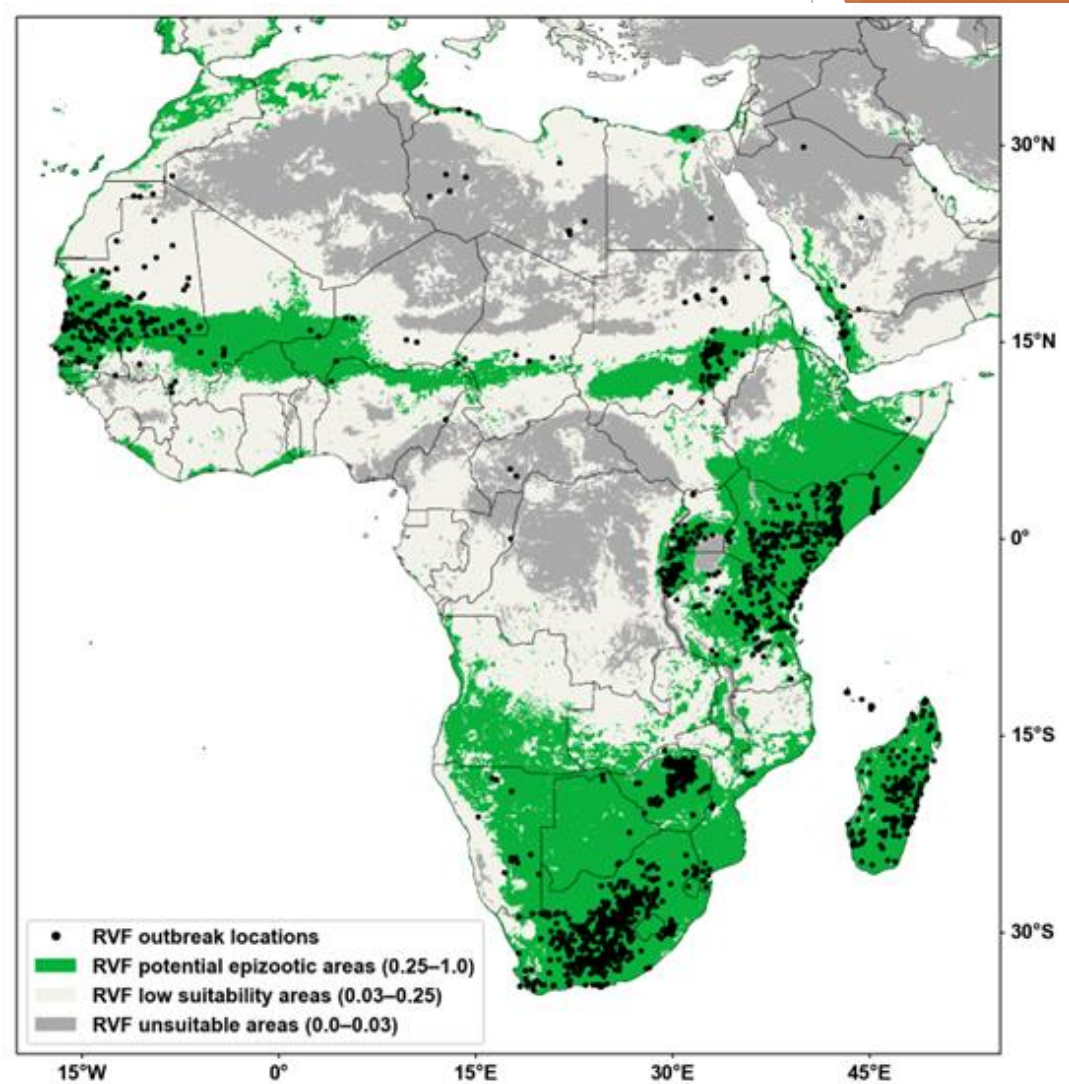
- ▶ Sources: FAO, WOAAH (OIE)
- ▶ 1969-2023
- ▶ ~2800 reports
 - ▶ Removed duplicates by coordinates and year/month
 - ▶ Manually filtered very close (<0.05degree distance) points
 - ▶ Manually filtered country-level points



RVF Suitability Map

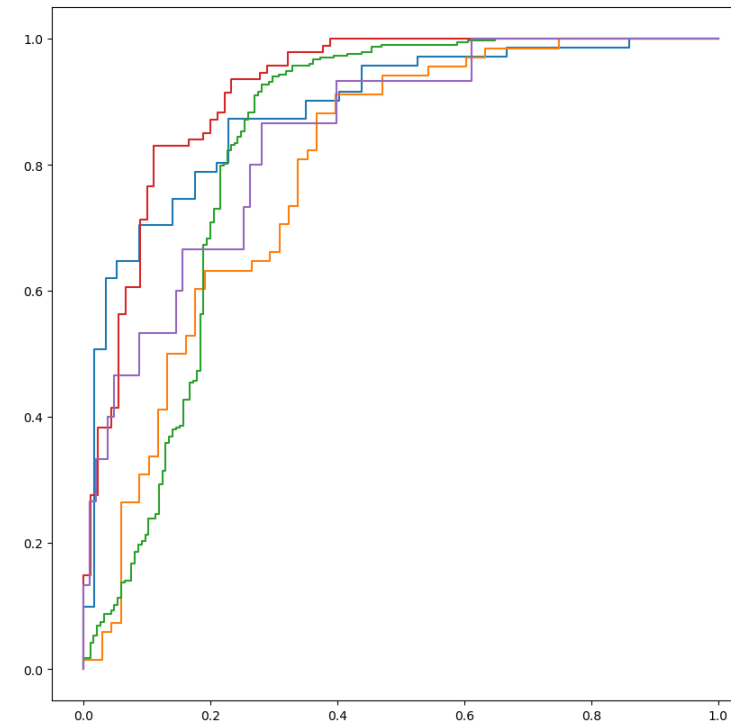
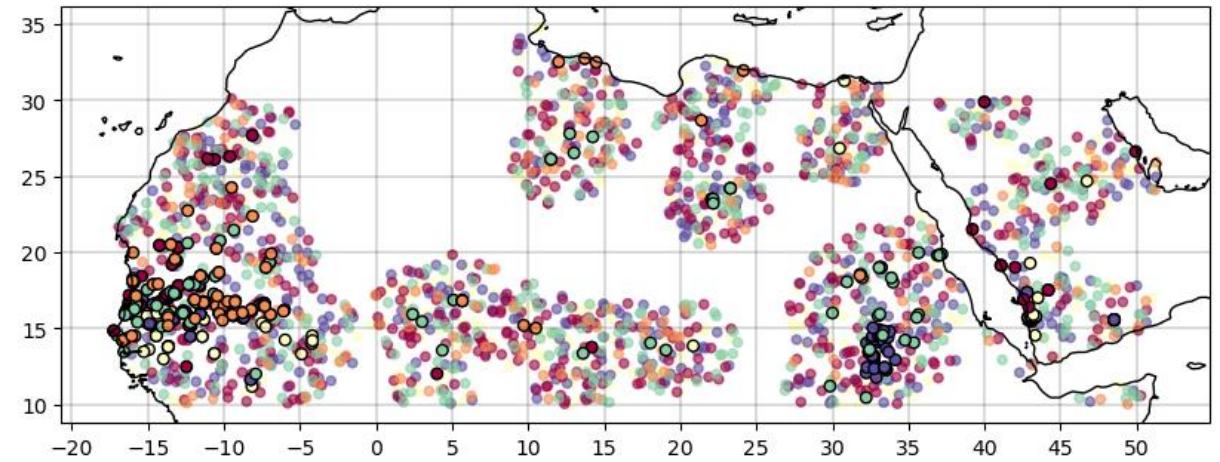
- ▶ Suitability map created with R, Maxent software from AMNH*
- ▶ Features:
 - ▶ Bioclimatic variables derived from 2000-2023 climate data
 - ▶ MODIS/Terra NDVI
 - ▶ MODIS/Terra LST
 - ▶ ARC2 Precipitation
 - ▶ SRTM Elevation
 - ▶ RVF presence (outbreaks)

*AMNH: American Museum of Natural History



Random Forest Model: Development and Testing

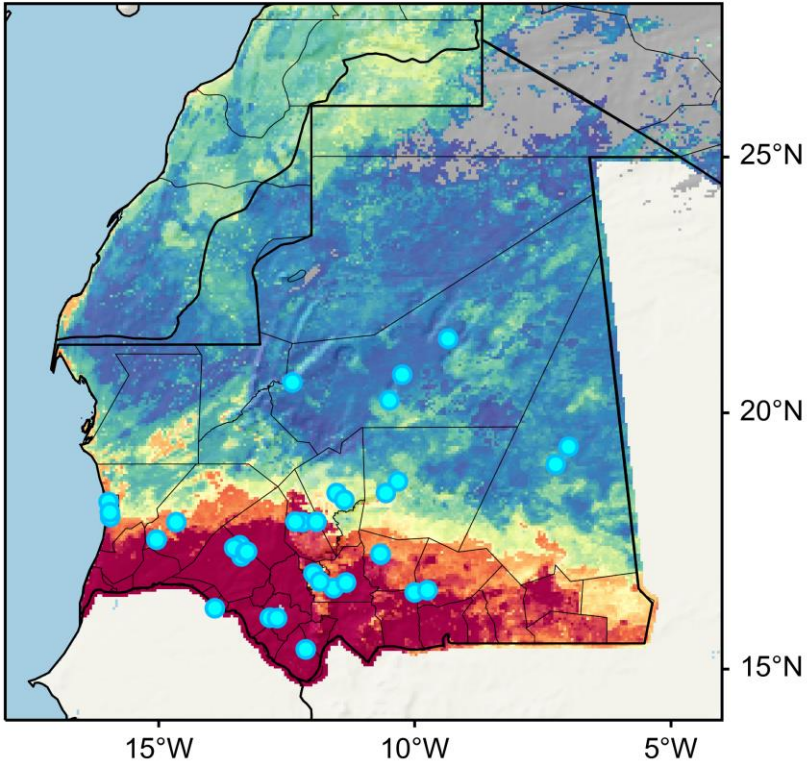
- ▶ Pseudo-absence data points randomly generated
 - ▶ latitude, longitude, year, month
- ▶ Records split into 5 k-folds (subsets)
- ▶ Each subset is held out one at a time for testing
- ▶ Model applied to climate dataset



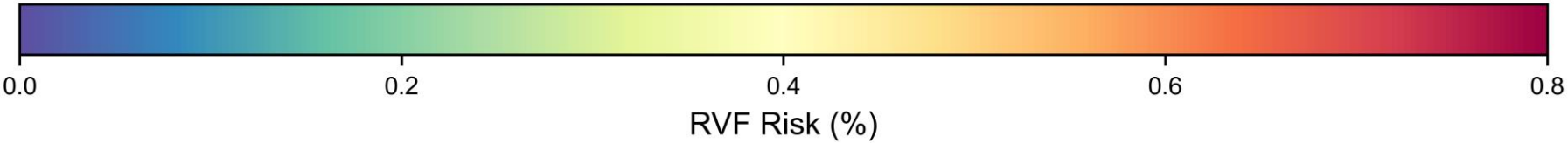
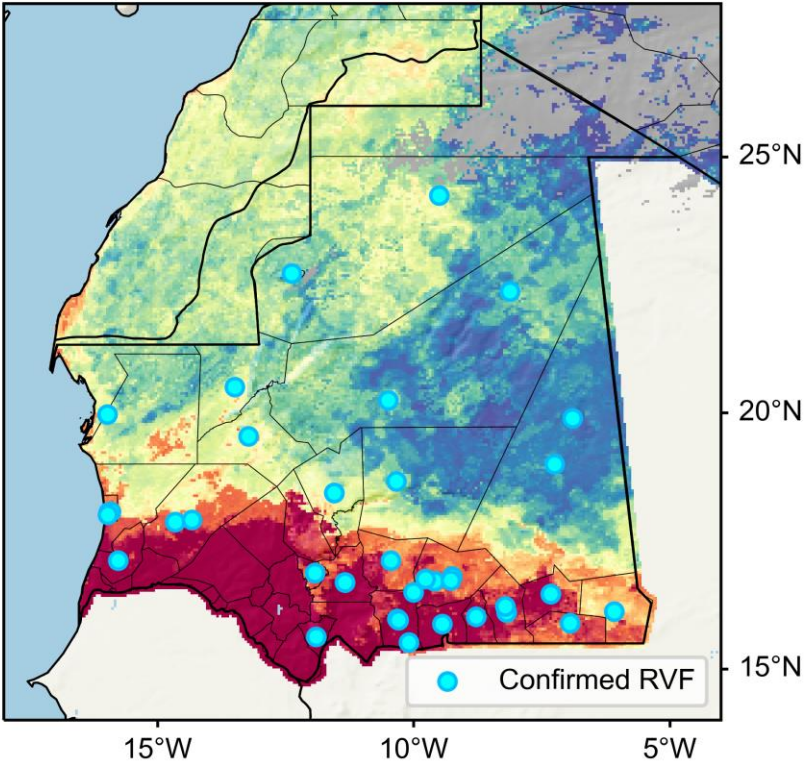
Random Forest Model: Results

RVF Risk and Outbreaks in Mauritania

August 2020



August 2022



Pathways to Operational Sustainability

- ▶ WAOH + Tunis Region Office
- ▶ FAO DST in collaboration with WAOH
- ▶ Regional body such as Centre Régional AGRHYMET
- ▶ REMESA (*REseau MEditerranéen de Santé Animale*)
 - ❖ Will require a dedicated Operator
 - ❖ Transboundary Threats Require Regional Perspective

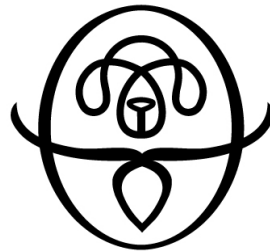
Funding and Collaboration



Federal Ministry
for Economic Cooperation
and Development



World Organisation
for Animal Health
Founded in 1924



PC-TAD

IZS
TERAMO

ISTITUTO
ZOOFILATTICO
SPERIMENTALE
DELL'ABRUZZO
E DEL MOLISE
"G. CAPORALE"



DEPARTMENT OF CIVIL &
ENVIRONMENTAL ENGINEERING



THE UNIVERSITY OF
TENNESSEE
KNOXVILLE

Discussion & GEE App Demo