



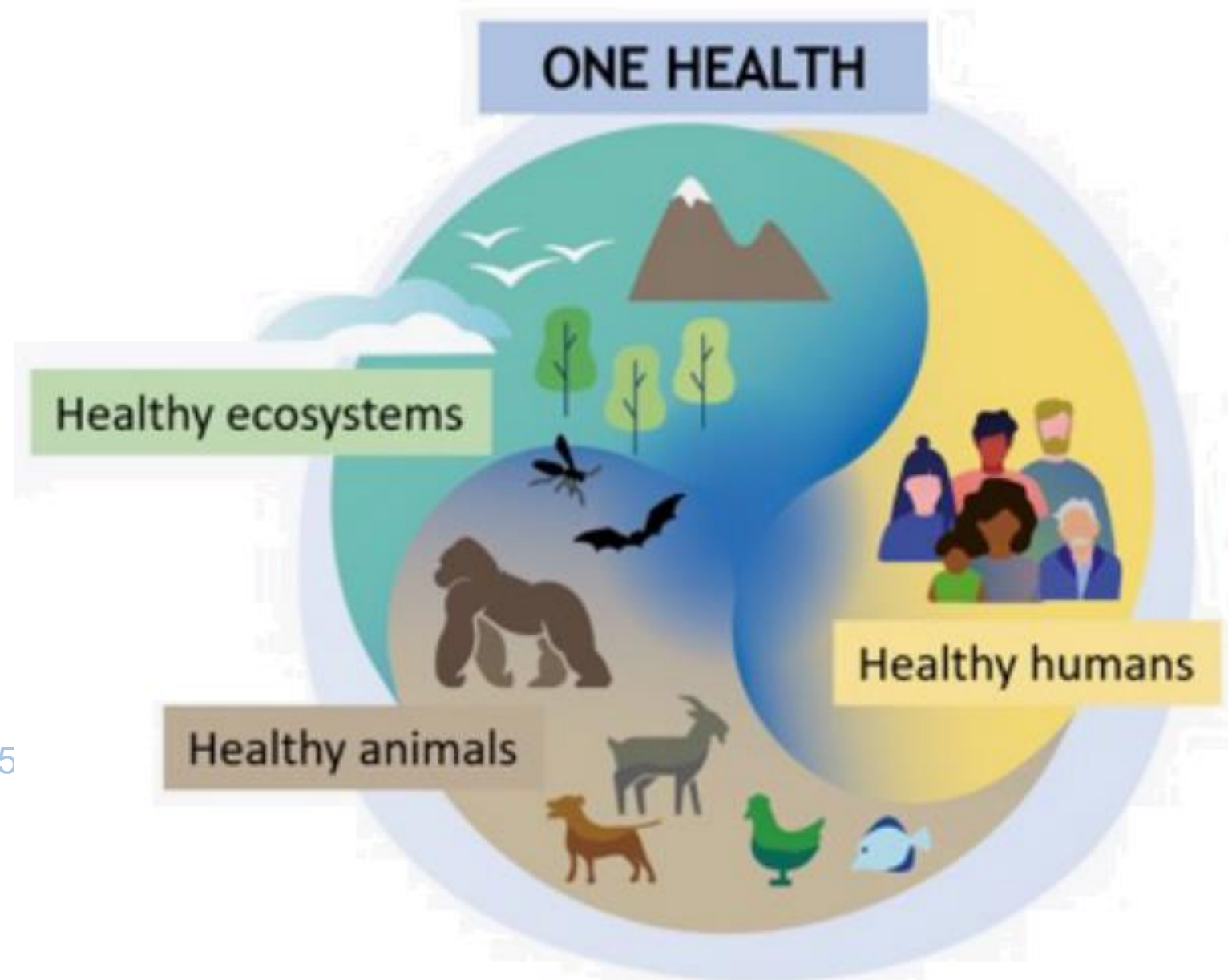
Food and Agriculture  
Organization of the  
United Nations

# One Health and the case for CBPP

Wednesday 14 June 2023 11:00 – 11:15

Session : Focus on policy

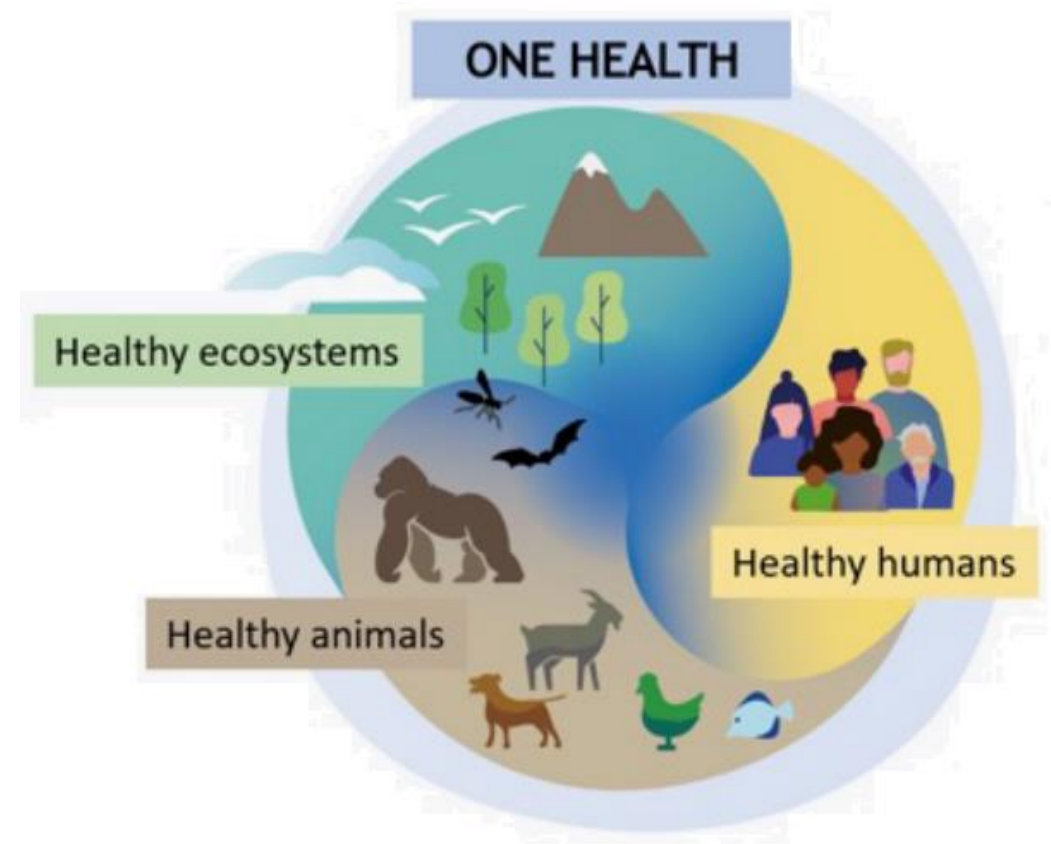
Akiko Kamata, FAO

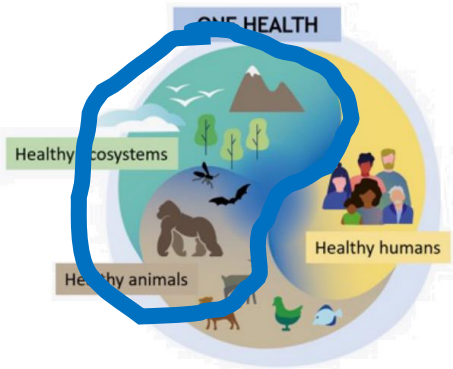




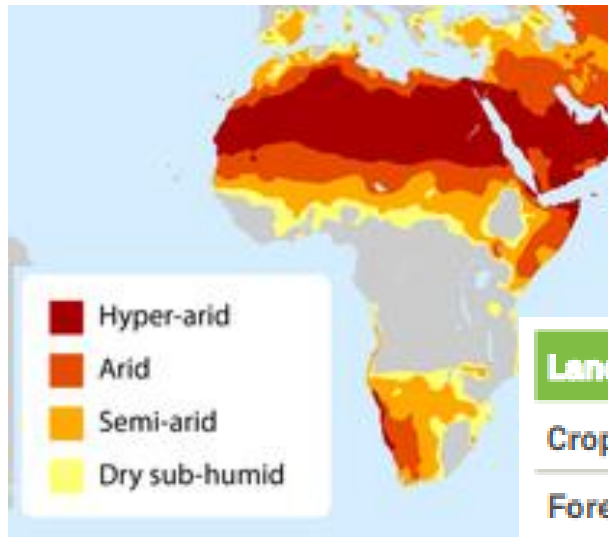
**One Health** is an integrated, unifying approach that aims to sustainably balance and optimize the health of people, animals and ecosystems.

<https://www.fao.org/one-health/en>





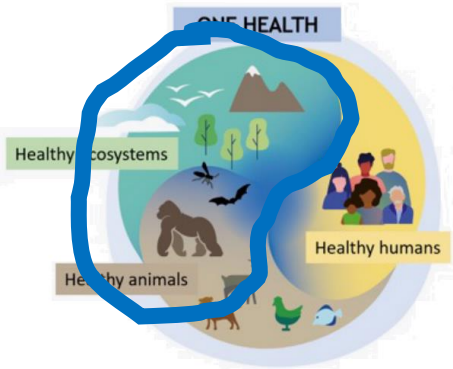
# In Africa, 27.35% of land are Rangelands and pasture not cropland



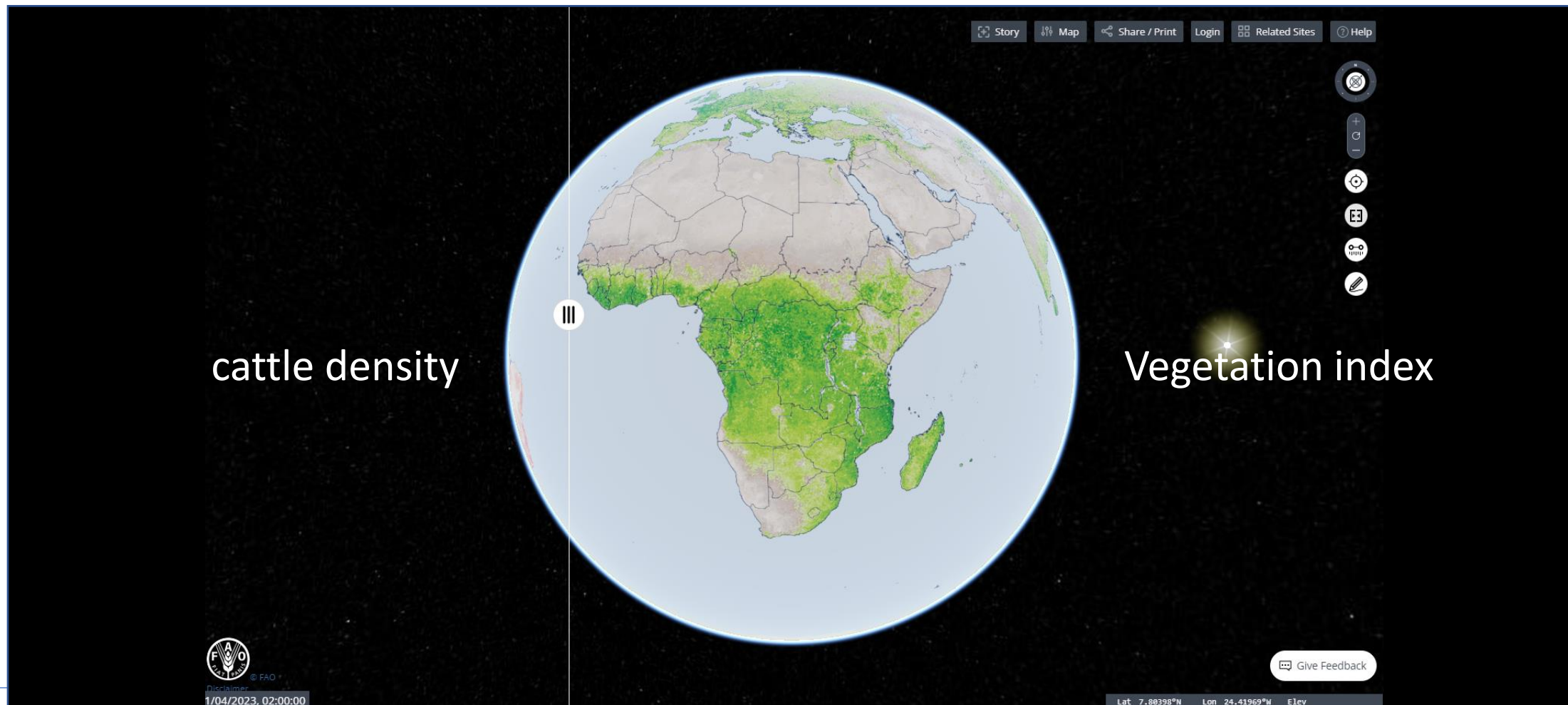
<https://www.fao.org/dryland-forestry/background/what-are-drylands/en/>

Land use categories	Million ha (Mha)	%
Cropland (arable and tillage land, and agro-forestry systems not forest)	349.83	11.70%
Forest (land with woody vegetation consistent with thresholds for GHG inventory)	783.33	26.21%
Grassland (rangelands and pasture not cropland)	817.46	27.35%
Other land (bare soils, rock, sand dunes, and all unmanaged land)	967.72	32.38%
Settlement (transportation infrastructure, villages and human settlements)	26.84	0.90%
Wetland (land covered or saturated by water for all or part of a year)	43.72	1.46%
<b>TOTAL</b>	<b>2 988.90</b>	<b>100%</b>

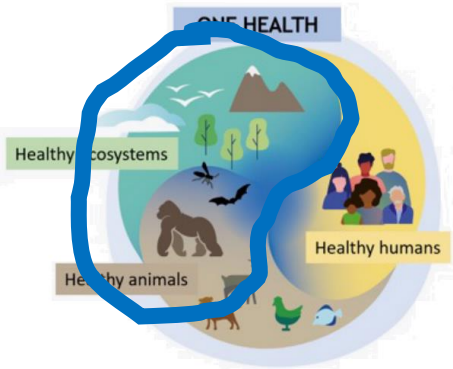
AFRICA OPEN D.E.A.I OPEN DATA FOR ENVIRONMENT, AGRICULTURE AND LAND <https://www.fao.org/3/cb5896en/cb5896en.pdf>



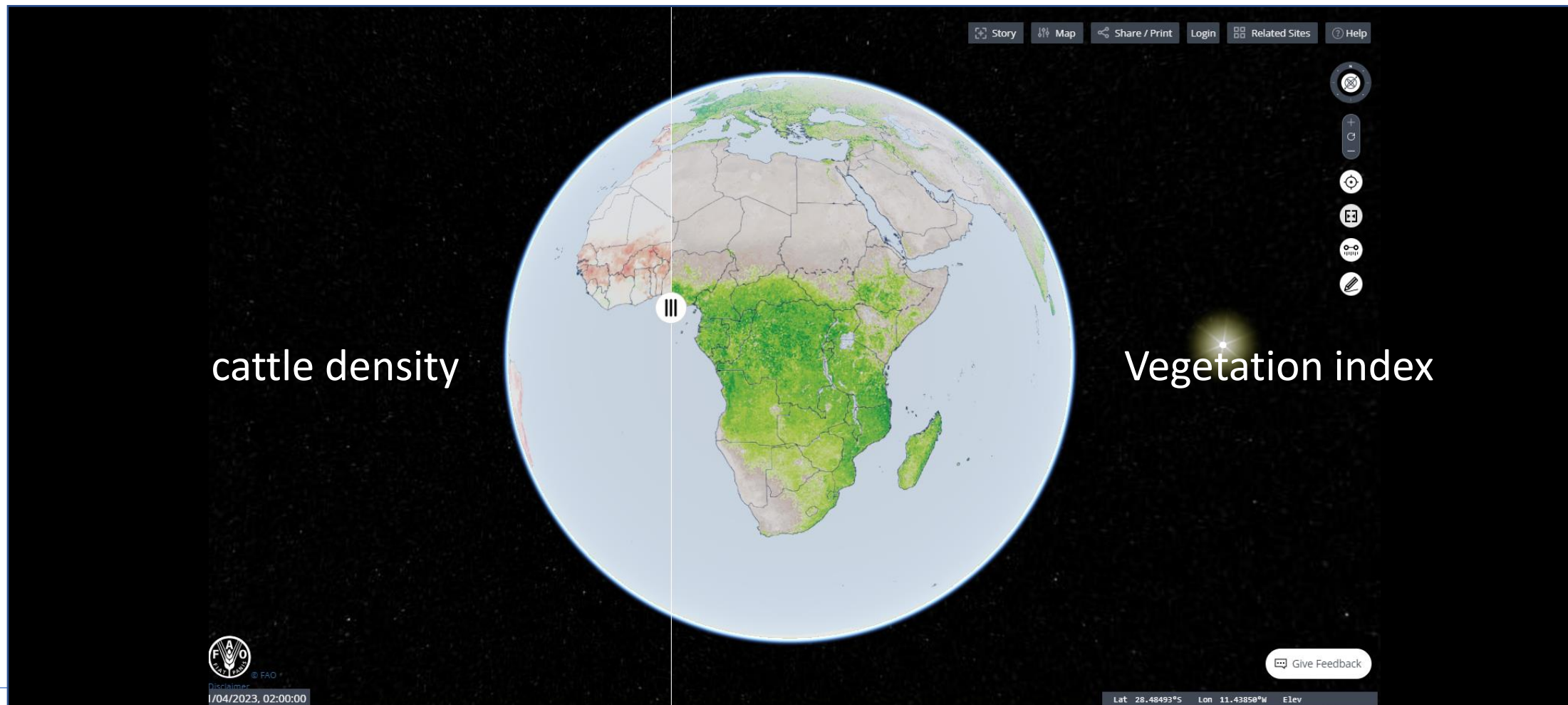
In Africa, 27.35% of land are Rangelands and pasture not cropland

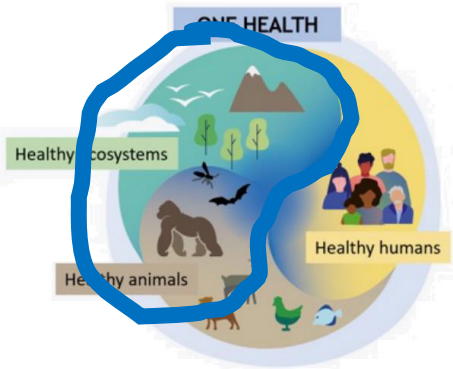




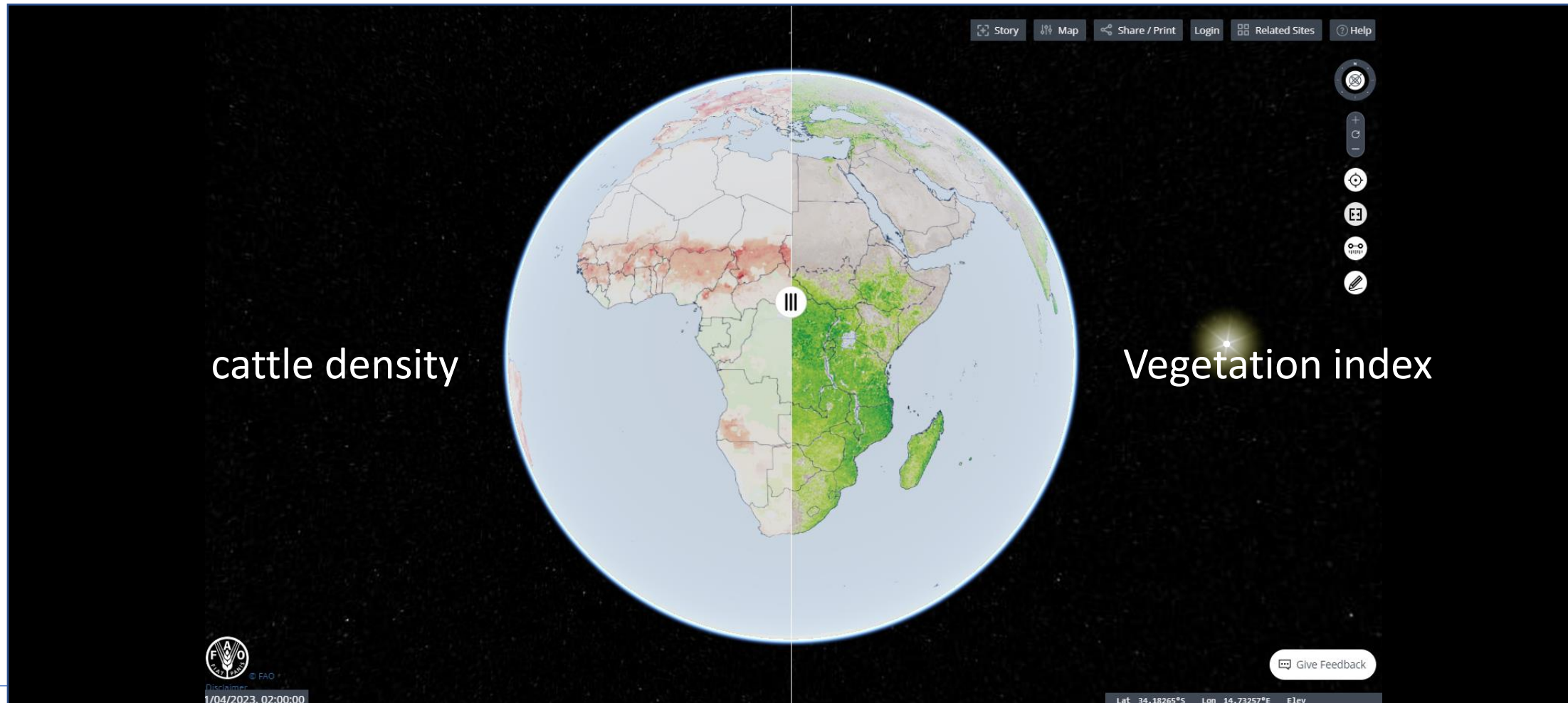


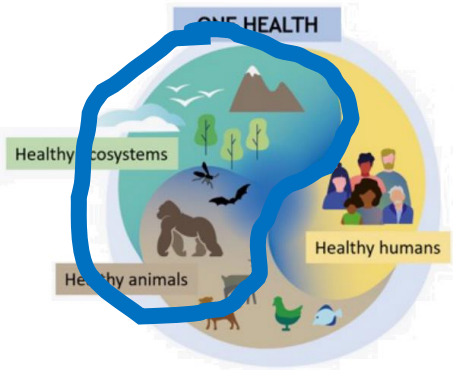
In Africa, 27.35% of land are Rangelands and pasture not cropland



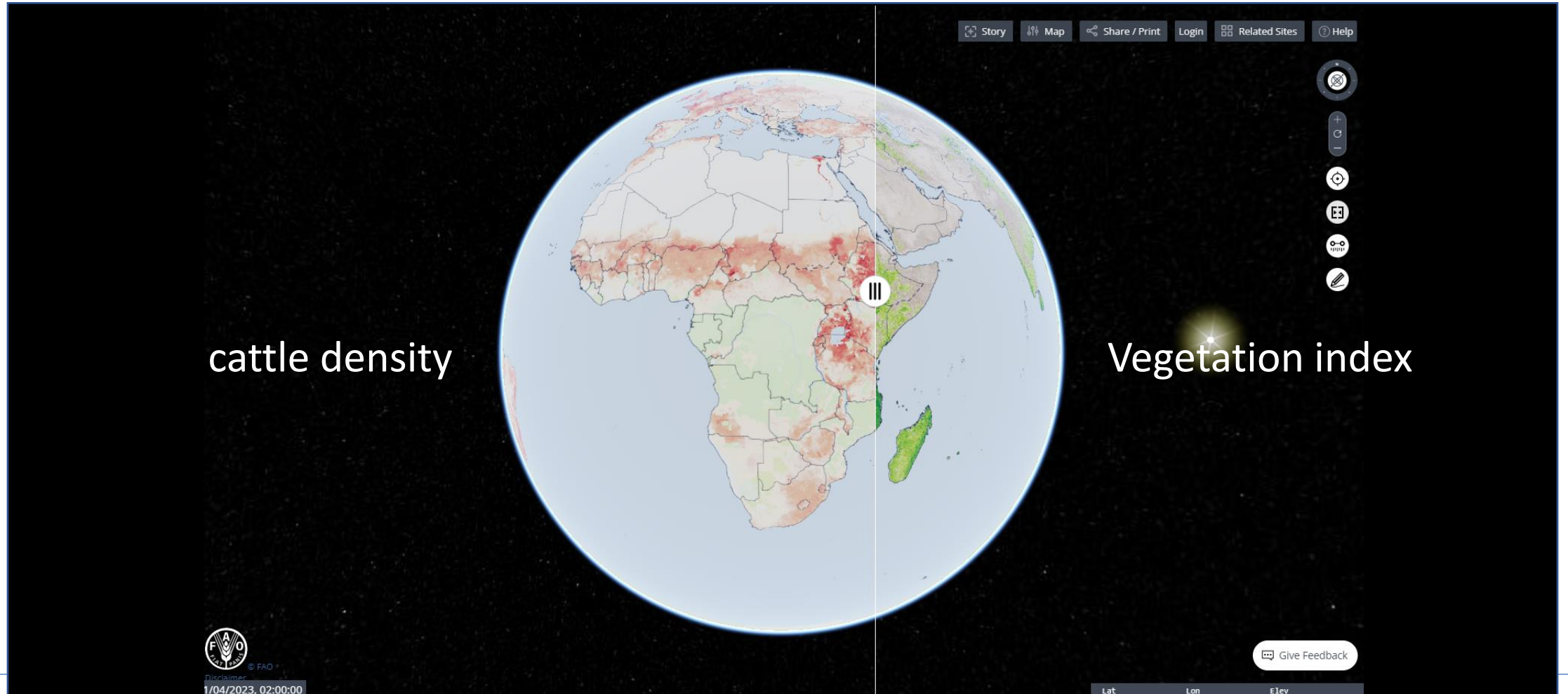


In Africa, 27.35% of land are Rangelands and pasture not cropland

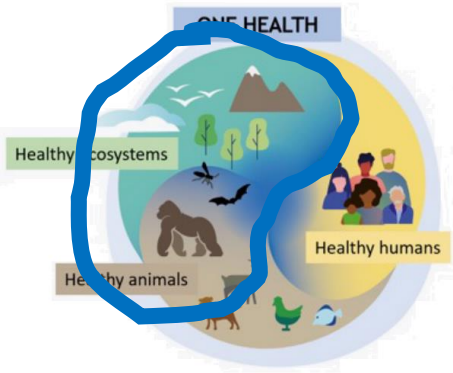




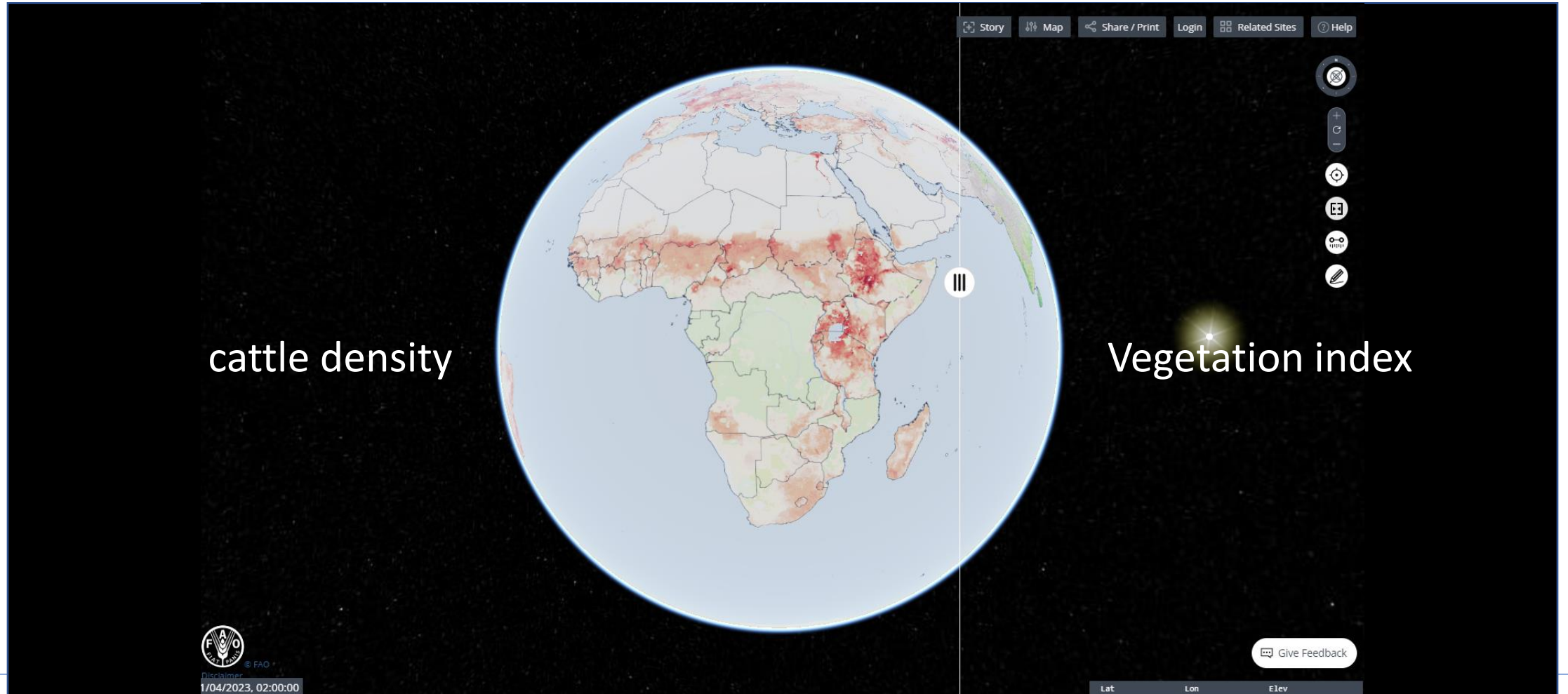
In Africa, 27.35% of land are Rangelands and pasture not cropland



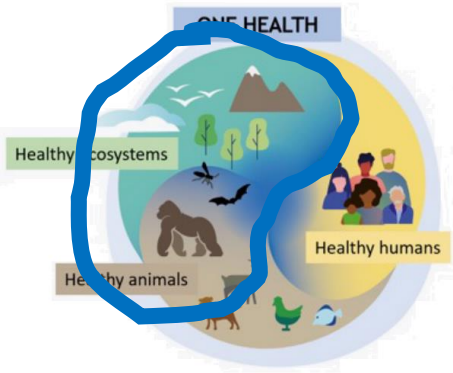




In Africa, 27.35% of land are Rangelands and pasture not cropland







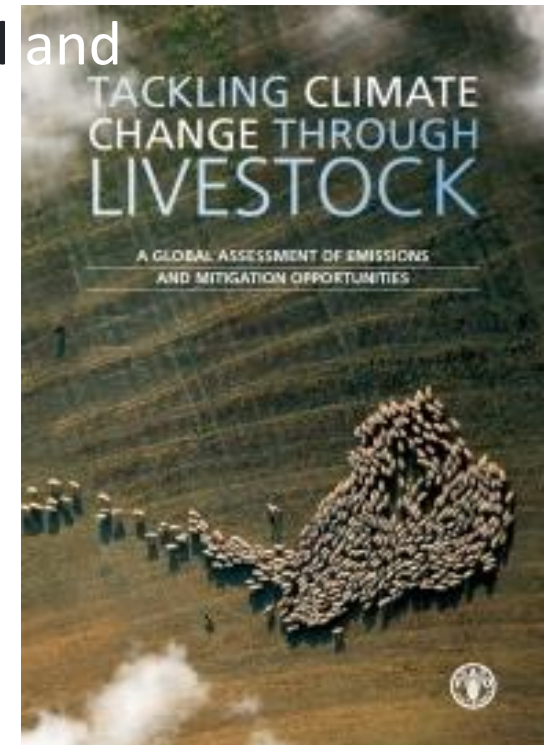
# Greenhouse gas (GHG) emissions



- Cattle are the animal species responsible for the most emissions, representing about 65% of the livestock sector's emissions.
- For ruminants the greatest promise involves improving animal and herd **efficiency**.

<https://www.fao.org/news/story/en/item/197623/icode/>

**Death of grown-up cattle caused by diseases is a waste, such waste must be mitigated.**

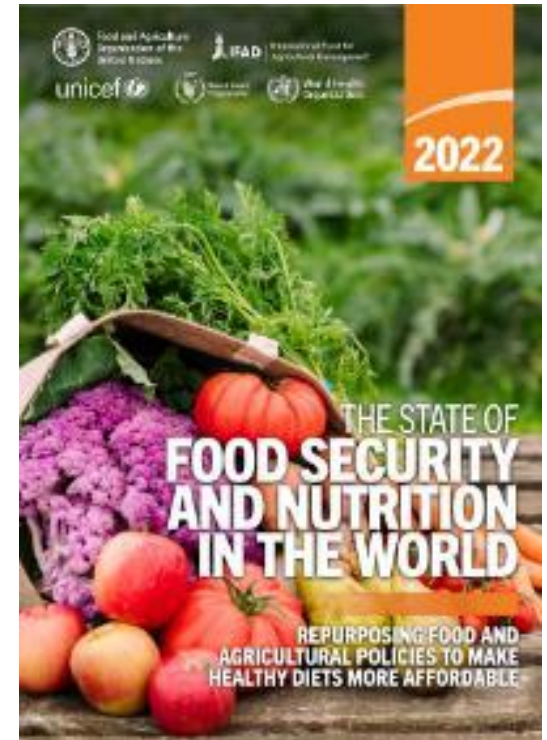


Gerber, P.J. *et al.* 2013. Tackling climate change through livestock – A global assessment of emissions and mitigation opportunities. <http://www.fao.org/docrep/018/i3437e/i3437e.pdf>



# People affected by hunger

- More than one-third (278 million) of the people in the world affected by hunger in 2021 were in Africa
- One in five people in Africa (20.2 percent of the population) was facing hunger in 2021
- In the last year, moderate or severe food insecurity increased the most in Africa, the region with the highest prevalence at both levels of severity





# Healthy diet – quantity at reasonable price

- Protein source

- School milk



<https://migrationology.com/mbuzi-nyama-choma-tanzanian-food/>



<https://snv.org/update/snv-school-milk-programme-turns-one-70000-school-children-now-take-milk>





# Healthy diet – crop production and cooking

- Draught power

- Fuel



<https://nation.africa/kenya/business/seeds-of-gold/stinging-nettle-and-dairy-cows-4078126>



Wilson, R.T. 2018. Domestic Livestock in African Cities: Production, Problems and Prospects. DOI:10.2174/2352631901804010001



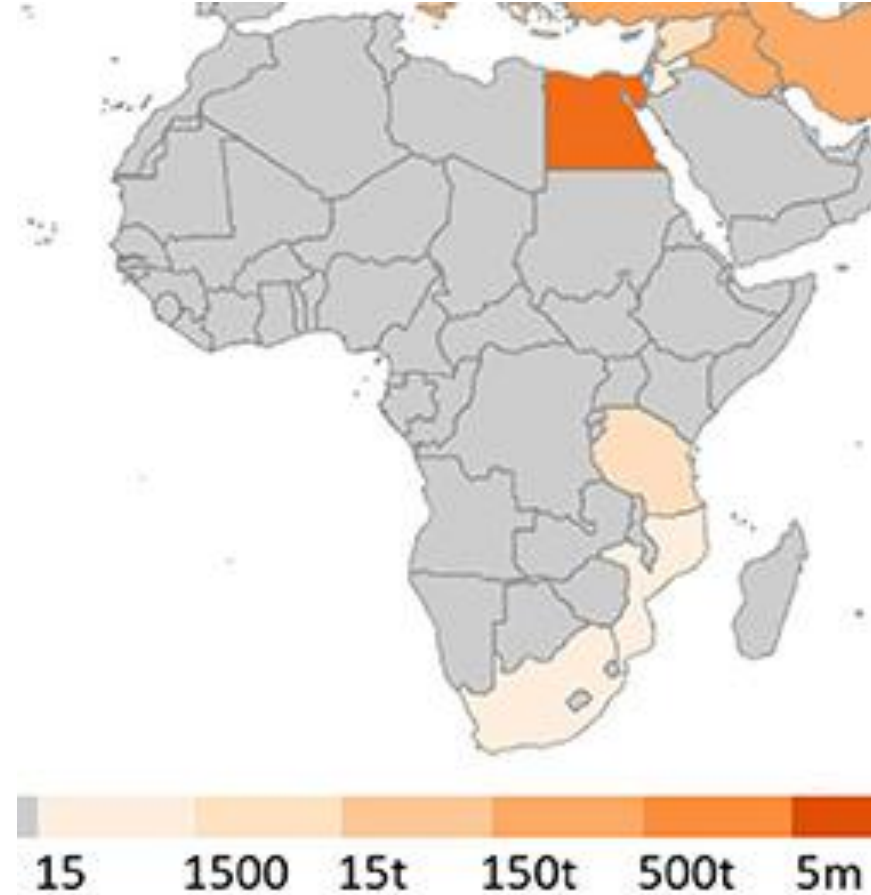
# water buffaloes (*Bubalus bubalis*)



- They also present in Africa
- For milk, cheese and butter



[https://commons.wikimedia.org/wiki/File:Water\\_Buffalo\\_in\\_Nile\\_River,\\_Egypt\\_%284058058925%29.jpg](https://commons.wikimedia.org/wiki/File:Water_Buffalo_in_Nile_River,_Egypt_%284058058925%29.jpg)



Humberto, A., Minervino, H., Zava, M., Vecchio, S., & Borghese, A. 2020. *Bubalus bubalis*: A Short Story. *Front. Vet. Sci.*, 7-2020: 570413. <https://doi.org/10.3389/fvets.2020.570413>



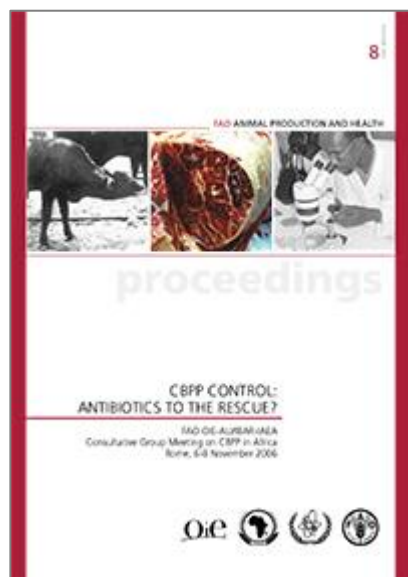


# CBPP treatment

- In the past...

CBPP control: antibiotics to the rescue?

The issue then was whether CBPP can be cured by antibiotics

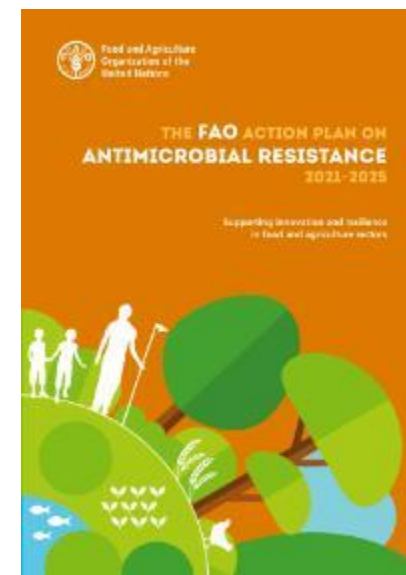


<https://www.fao.org/publications/card/en/c/0b371f5d-a58a-5ed3-9a2a-2709ad87e77e/>

- Today...

The FAO Action Plan on Antimicrobial Resistance 2021–2025

The issue now is whether treatment of CBPP increases AMR

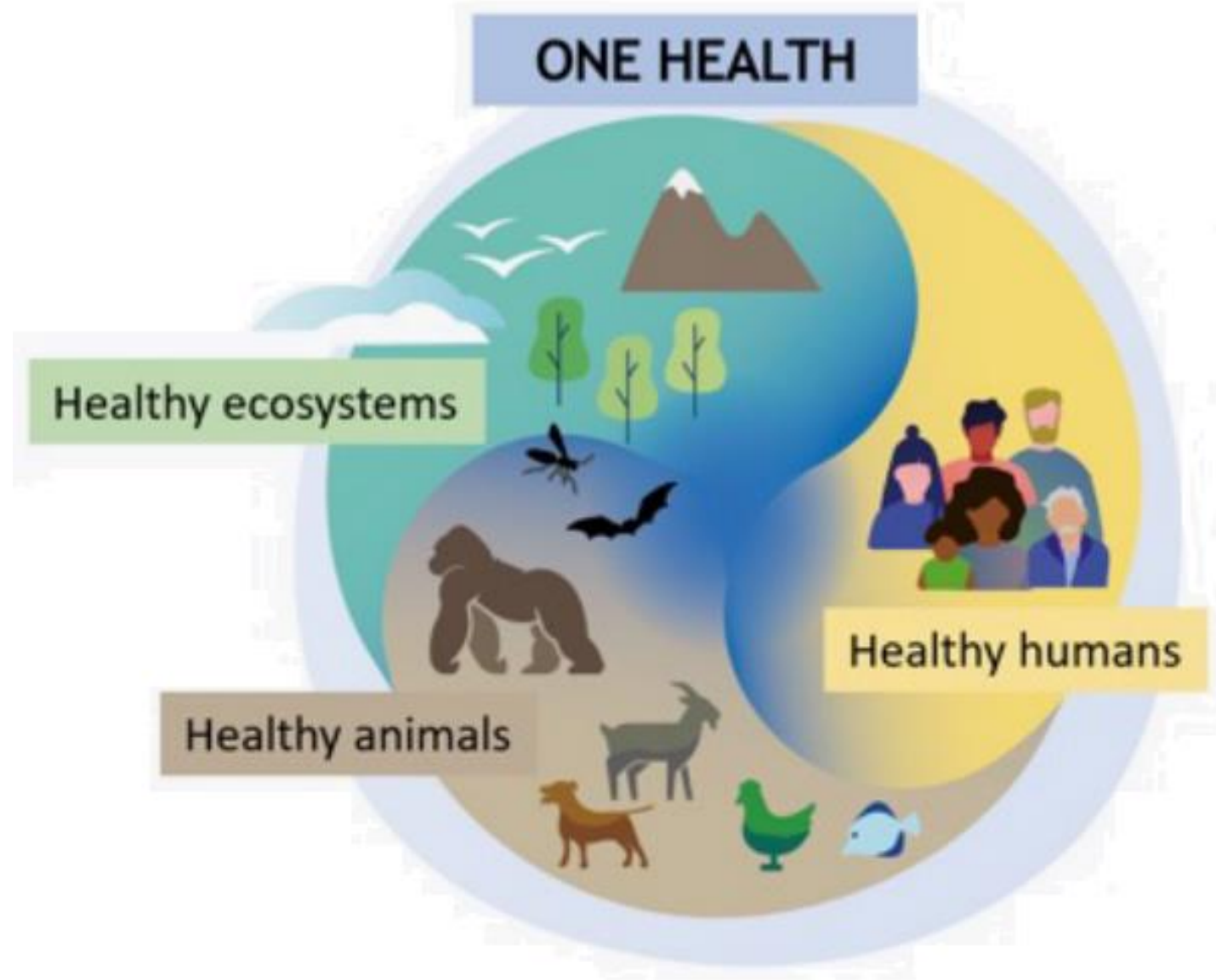


<https://www.fao.org/documents/card/en/c/cb5545en>





CBPP is a part of One Health, not only livestock health, it directly, indirectly impacts food production, nutrition, food price (affordability) and environment.



# Thank you & Merci



*Protecting people, animals, and the environment everyday*