

Institutionalizing One Health in Kenya

MATHEW MUTURI - KENYA DVS

Implementation of OH in Kenya – The ZDU

Kenya's OH office formed between line ministries of human and animal health

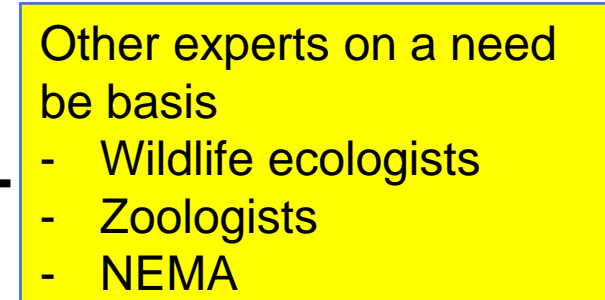
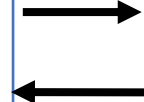
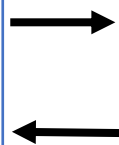
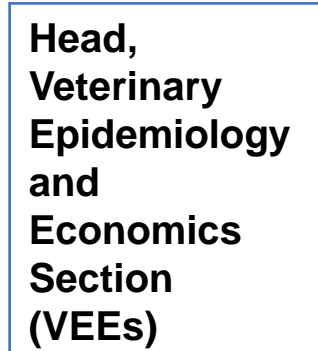
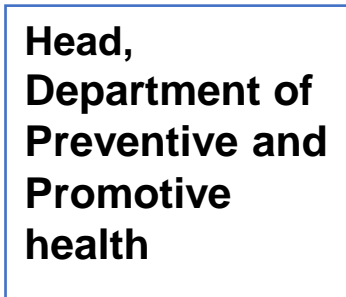
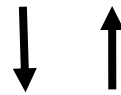
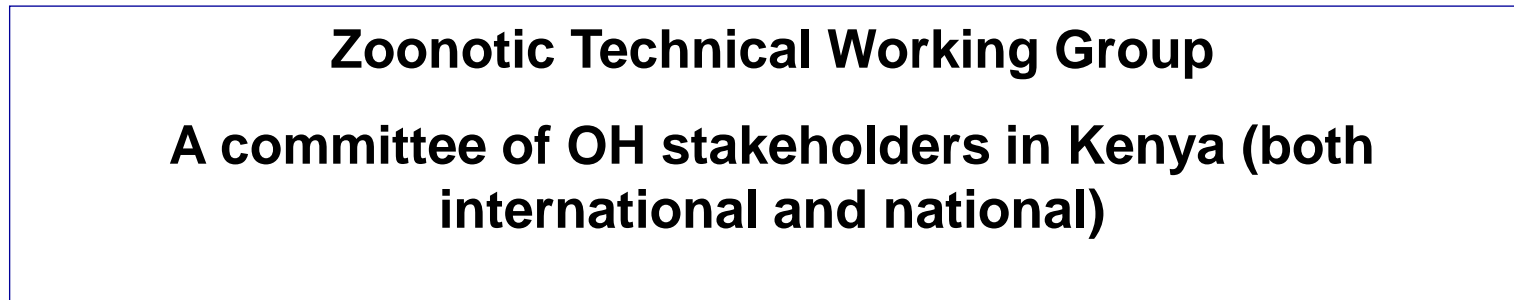
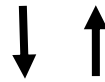
Established in 2012 through a MOU at Ministerial level

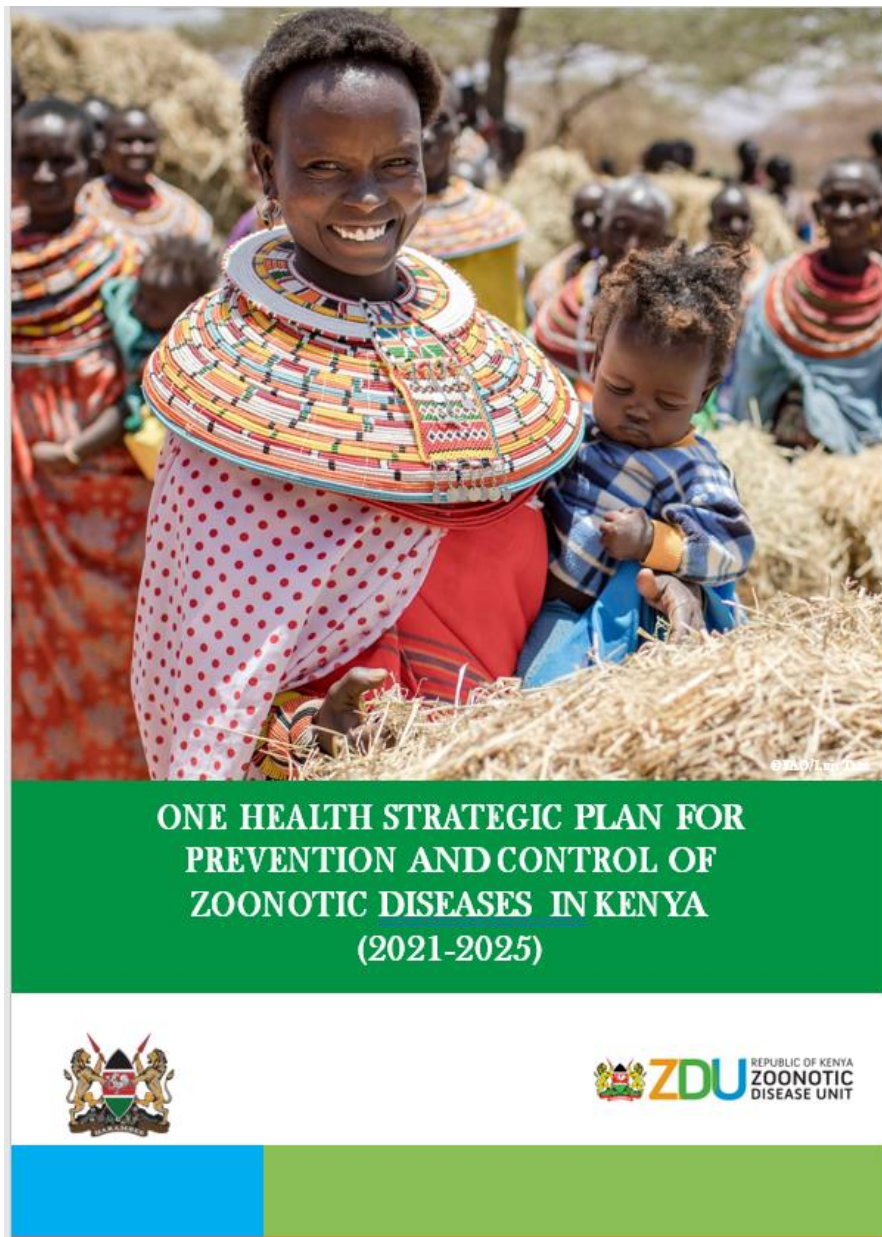
Epidemiologists, administrator

Other experts co-opted on a need to be basis



ZDU Organogram





Revised OHSP

Objective 1

Strengthen implementation of One Health approach

Objective 2

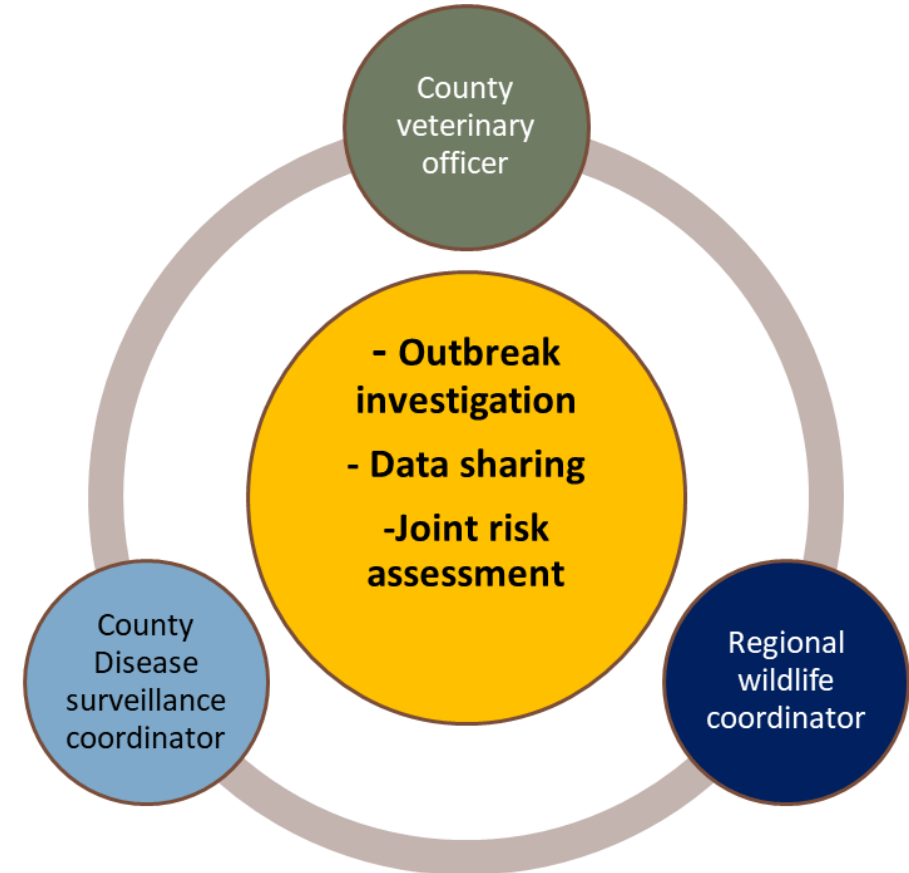
Strengthen prevention, surveillance, response and control of priority zoonotic diseases

Objective 3

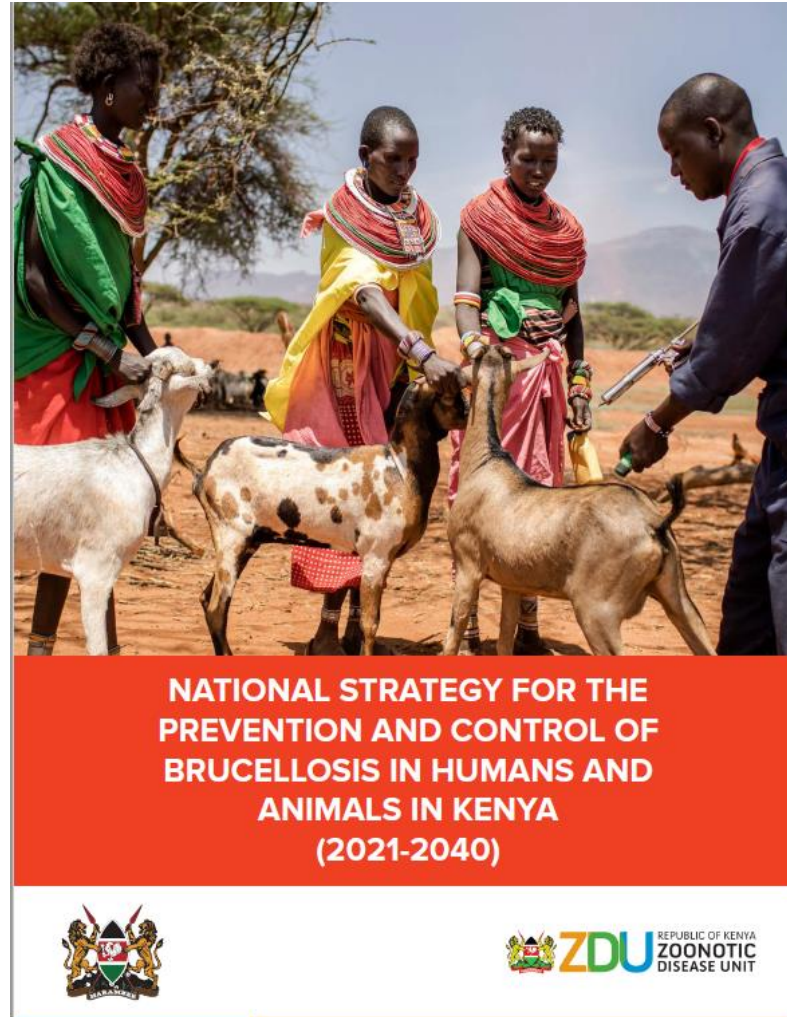
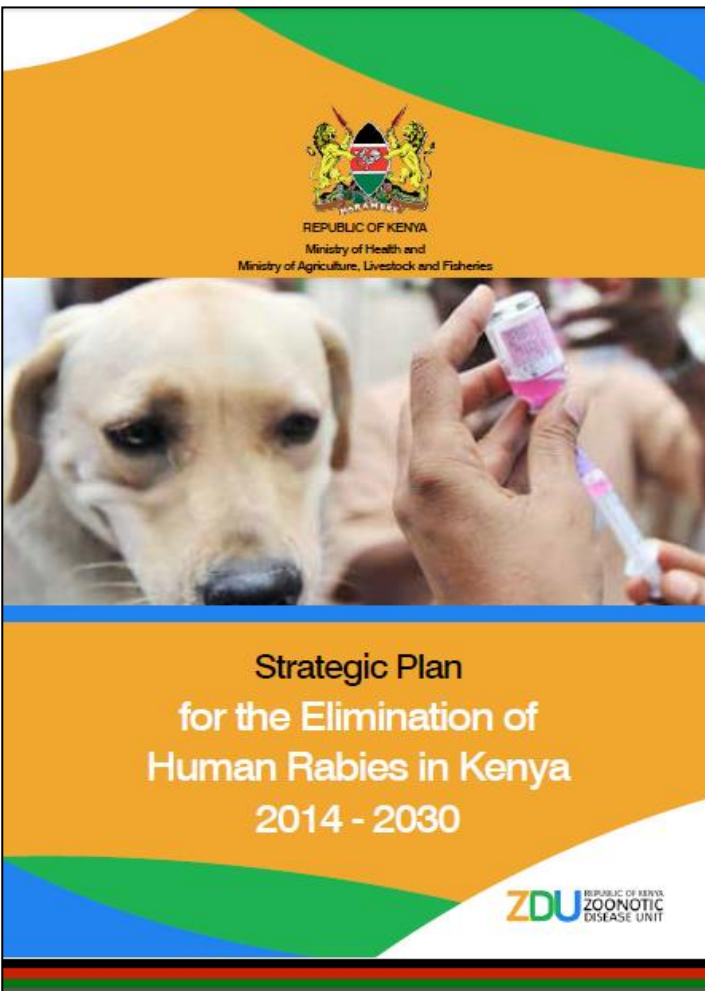
Promote applied research using the OH approach

Ob 1 - Establishment of structures to promote OH

1. Technical working group
2. Policy level engagement
3. In-service training – regional specific drivers of OH
4. Event specific technical working groups
5. Establish sub-national OH units



Ob 2 - Surveillance and response



Joint disease CPs,
guidelines

1. Brucellosis
2. Anthrax
3. RVF
4. Rabies
5. A.Influenza,
6. outbreak guidelines,

Ob 3- Operational research



PROMOTE AND SUPPORT ZOOONOTIC DISEASE AND OH EVENT RESEARCH TO IMPROVE DATA AVAILABILITY



RESEARCH DONE AT THE HUMAN-ANIMAL-ENVIRONMENT INTERPHASE



EVIDENCE BASED DECISION MAKING



STRATEGIC PLANS AND CPS



ZDU REPUBLIC OF KENYA
ZOOONOTIC
DISEASE UNIT

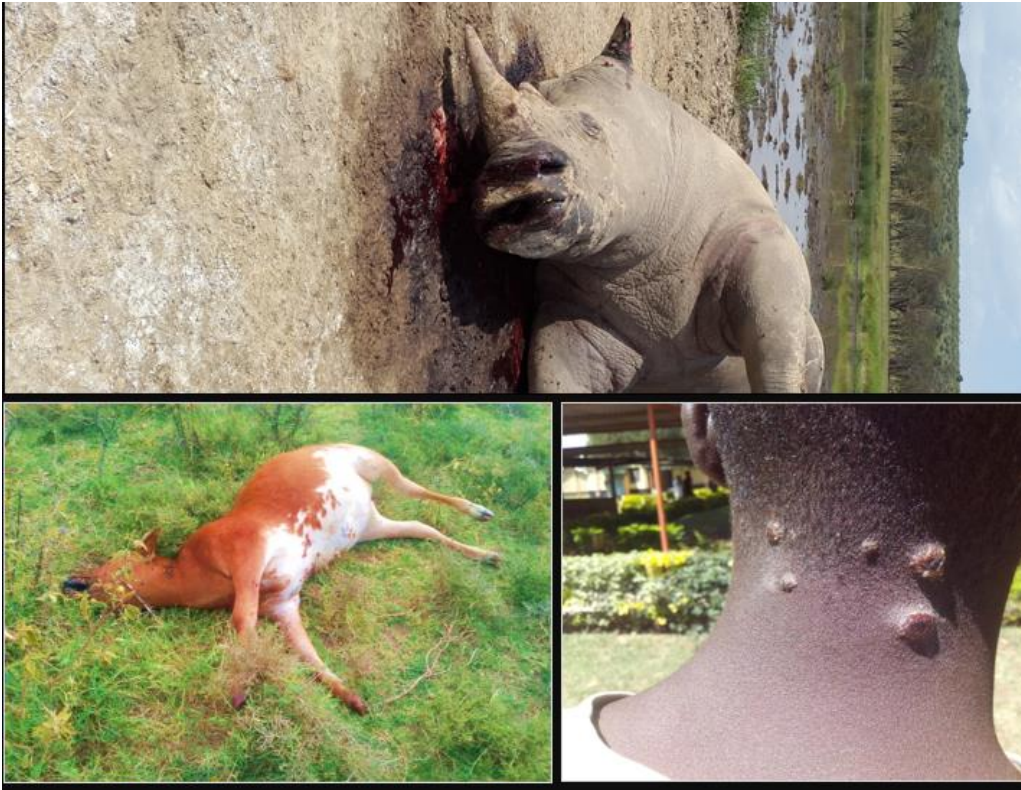
KENYA
WILDLIFE
SERVICE



What exactly is OH to ZDU at national and sub-national levels?

- Better coordination between sectors
 - *Routinely sharing surveillance and outbreak data*
 - *Develop integrated (human/animal) plans for preventing and controlling priority zoonotic diseases.*
 - *Structured and routine communication*
- Improving the capacity in animal and environmental health for better detection, prevention, and control of OH related events

What exactly is OH to ZDU National and sub-national levels 2/2



- Research at the human-animal-environmental interface
- To increase access to integrated promotive, preventive and curative human and animal health services
- Coordinated response to zoonotic diseases outbreak and other OH events

Challenges in implementation OH in Kenya

1. Resources - Financial and technical structures are sector-specific
2. Devolved governance system - Independent governance structure
3. Limited data on key drivers of OH
 - Low awareness among policy makers
 - Cost-benefit analysis of OH – **do we need OH?**
 - From manuscripts to health policy
4. Involvement of the environmental sector -Diverse specialties, limited expertise at lower levels
5. Need for stronger policy framework - bureaucratic process, shift in governance
6. Coordination of multiple partners



Lessons learnt

Identify region-specific drivers of OH

- AMR
- Zoonoses
- Anthrax?
Brucellosis?
Rabies?
- Food safety
- Climate change

Understand and adapt –

- No one size fits all approach

Sustainability

- away from project vs systems approach
- Need for “genuine” government involvement
- Support for capacity development

Operational research –

- from manuscripts to policy statements
- Focus on approaches to solve PH problems

THANK YOU FOR LISTENING

