

# Needs Assessment for National Wildlife Health Programs

Dr. Jonathan Sleeman  
Center Director

USGS National Wildlife Health Center



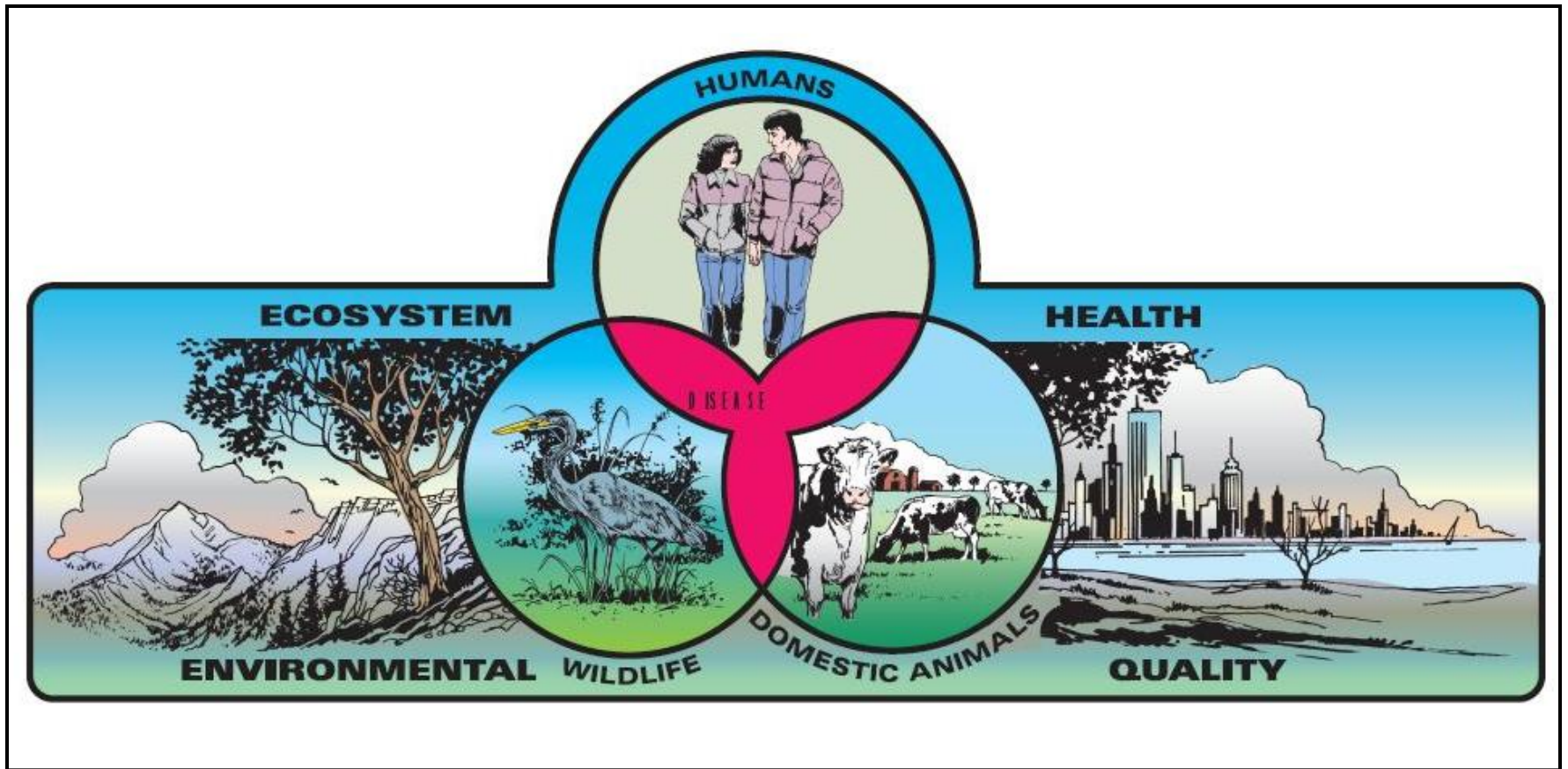
# Emerging Infectious Diseases

Global environment favoring the emergence of infectious diseases

Many emerging disease threats to human, animal and ecosystem health are of wildlife origin



# One Health Approach



# Core Attributes of National Wildlife Health Programs

*Rev. Sci. Tech. Off. Int. Epiz.*, 2018, **37** (3), 925-936

## Proposed attributes of national wildlife health programmes

C. Stephen <sup>(1, 2)\*</sup>, J. Sleeman <sup>(3, 4, 5)</sup>, N. Nguyen <sup>(3)</sup>, P. Zimmer <sup>(1)</sup>, J.P. Duff <sup>(6)</sup>,  
D. Gavier-Widén <sup>(7)</sup>, T. Grillo <sup>(8)</sup>, H. Lee <sup>(9)</sup>, J. Rijks <sup>(10)</sup>, M.-P. Ryser-Degiorgis <sup>(5, 11)</sup>,  
T. Tana <sup>(12)</sup> & M. Uhart <sup>(13)</sup>

(1) Canadian Wildlife Health Cooperative, 52 Campus Drive, Saskatoon, Saskatchewan S7N 5B4, Canada

(2) World Organisation for Animal Health (OIE) Collaborating Centre on Research, Diagnosis and Surveillance of Wildlife Diseases, University of Saskatchewan, Saskatoon S7N 5B4, Canada

(3) United States Geological Survey (USGS) National Wildlife Health Center, 6006 Schroeder Road, Madison, Wisconsin

Diagnostic Services

Epidemiology

Health Information Management

Coordination

Communication

Program Management

# Components of Surveillance and Management

## Detection of pathogens and diseases

- Network of people who are likely to encounter dead or sick, wild animals and collect samples

## Identification of pathogens

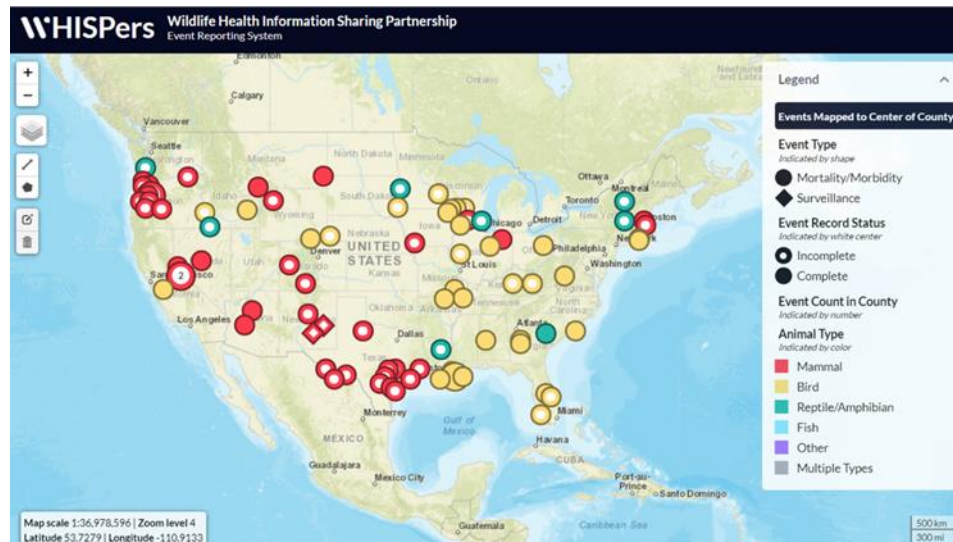
- Laboratory and personnel experienced with wildlife pathogens

## Information management

- Data storage and standards

## Analysis and communication

- Information relayed to those who can take action (e.g., disease management and prevention)

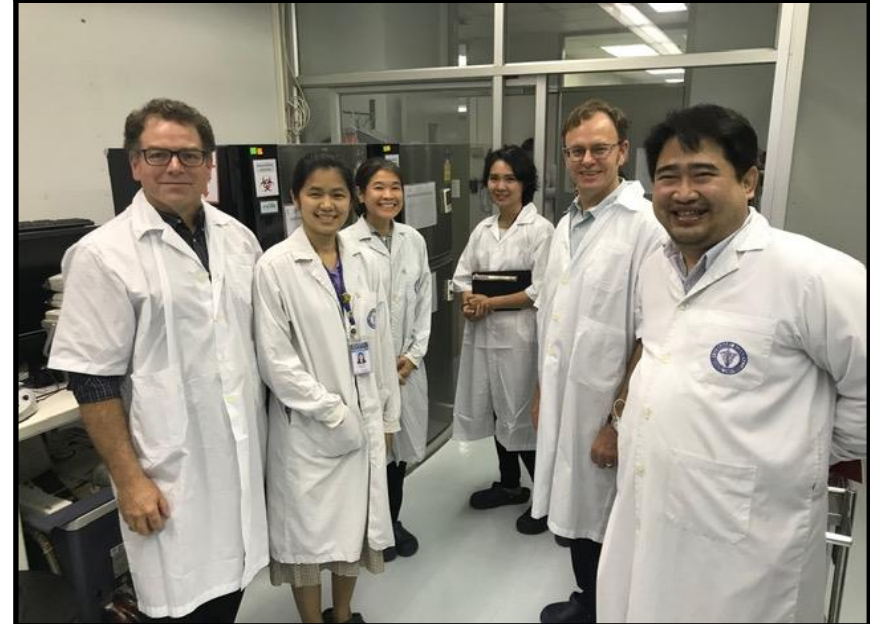


## Needs Assessment for National Wildlife Health Program

Theme/Function	Infrastructure and Capabilities	Current State (Describes the program as it currently exists)	Metrics for current state: 1) None; 2) Nascent/early; 3) Emerging; 4) Expanding; 5) Mature	Future Desired State (Describes the future program as directed by institutional and national programmatic goals and objectives)	Gaps and Needs
<b>Diagnostic:</b> <ul style="list-style-type: none"> <li>• <b>Cause of death determination</b></li> <li>• <b>Pathogen discovery</b></li> <li>• <b>General disease surveillance</b></li> </ul>	Diagnostic Laboratory System: <ul style="list-style-type: none"> <li>• Pathology</li> <li>• Diagnostic Microbiology, Virology, Parasitology, Toxicology</li> <li>• Biological Support</li> <li>• Biosafety</li> <li>• Quality Management</li> </ul>				
<b>Applied Epidemiology:</b> <ul style="list-style-type: none"> <li>• <b>Outbreak investigation</b></li> <li>• <b>Status and</b></li> </ul>	Applied Epidemiology: <ul style="list-style-type: none"> <li>• Statistical capabilities</li> <li>• Outbreak investigation</li> <li>• Hazard</li> </ul>				

# Needs Assessment Process

- Team of experts reviews of strategic plans, risk assessments, and other relevant documents
- Interviews with key partners and stakeholders: users of the program
- Interviews with key personnel who deliver the program
- Site visit to core facilities, etc.



# Needs Assessment Process

Metrics for assessment of the current state of the capabilities:

1. None = no capacity exists
2. Nascent/early = basic or rudimentary capacity exists
3. Emerging = basic capacity exists and plans in place for further expansion
4. Expanding = basic capacity exists, and new capabilities are currently being added/expanded
5. Mature = capacity is at the level to meet agency needs



# Needs Assessment Process

- As no international standards for wildlife health have been established, the needs assessment tool assesses the program's ability to meet the country's goals regarding wildlife health
- Important that these goals have been established for the tool to be effective



# Final Report



Summary of the main findings



Identification of priority gaps and needs



Recommendations for next steps

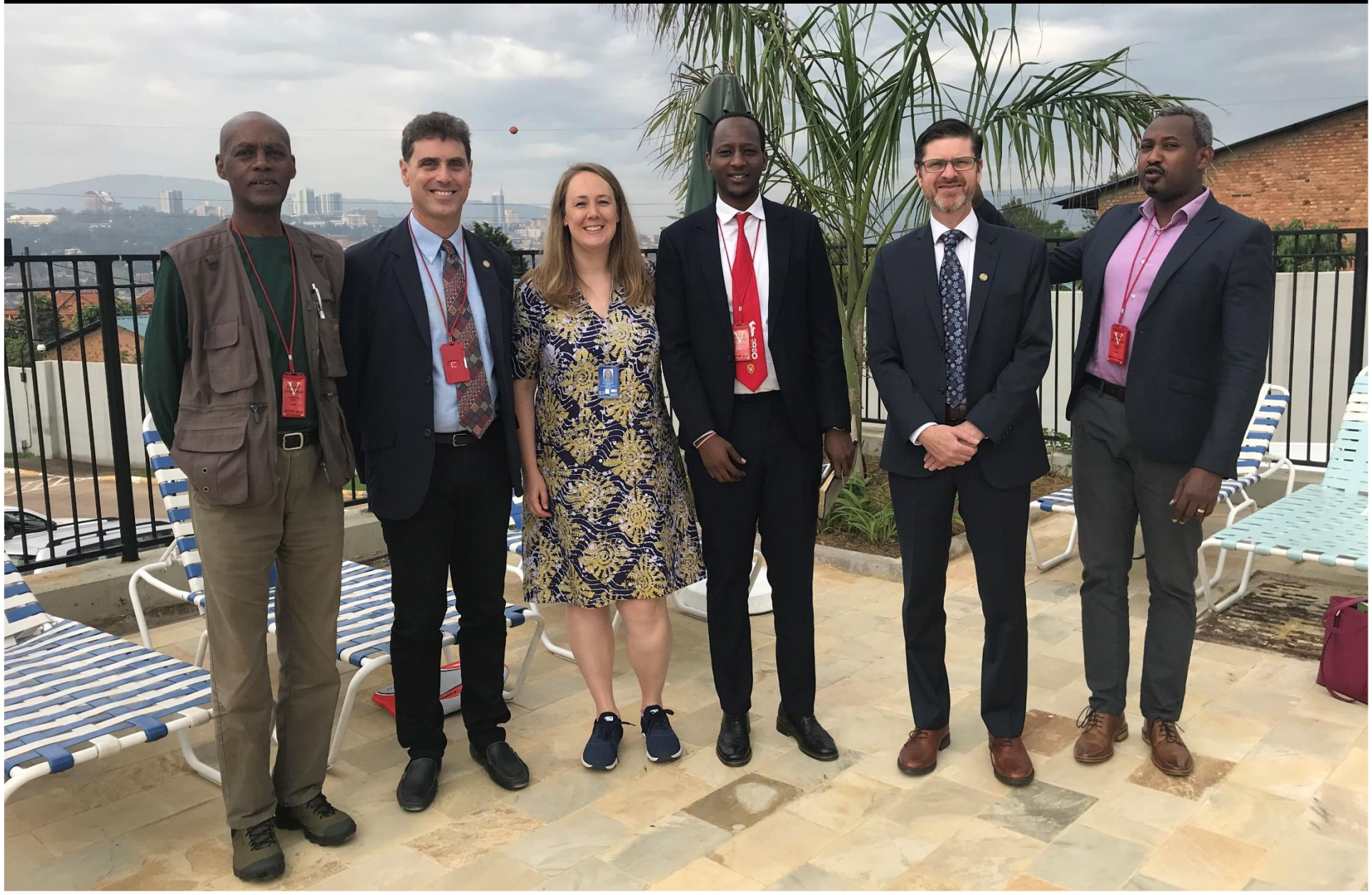


Co-create training and capacity building activities as desired

# Pilot Project: Thailand National Wildlife Health Center



# Pilot Project: Rwanda Development Board



Thank You  
Questions

