



# OIE REFERENCE LABORATORY FOR AFRICAN HORSE SICKNESS



# CURRENT ARCHIVE

---

- More than 1 000 African horse sickness virus isolates and strains, spanning more than 60 years
- Custodian of the prototype strains of AHSV used as reference strains



# DIAGNOSTIC LABORATORIES

---

## Molecular Diagnostics

- Hemi-nested RT-PCR; Real-time RT-PCR (sequenced based serotype ID)

## Virology / Serology:

- AHS iELISA
- VNT serotyping
- Virus isolation

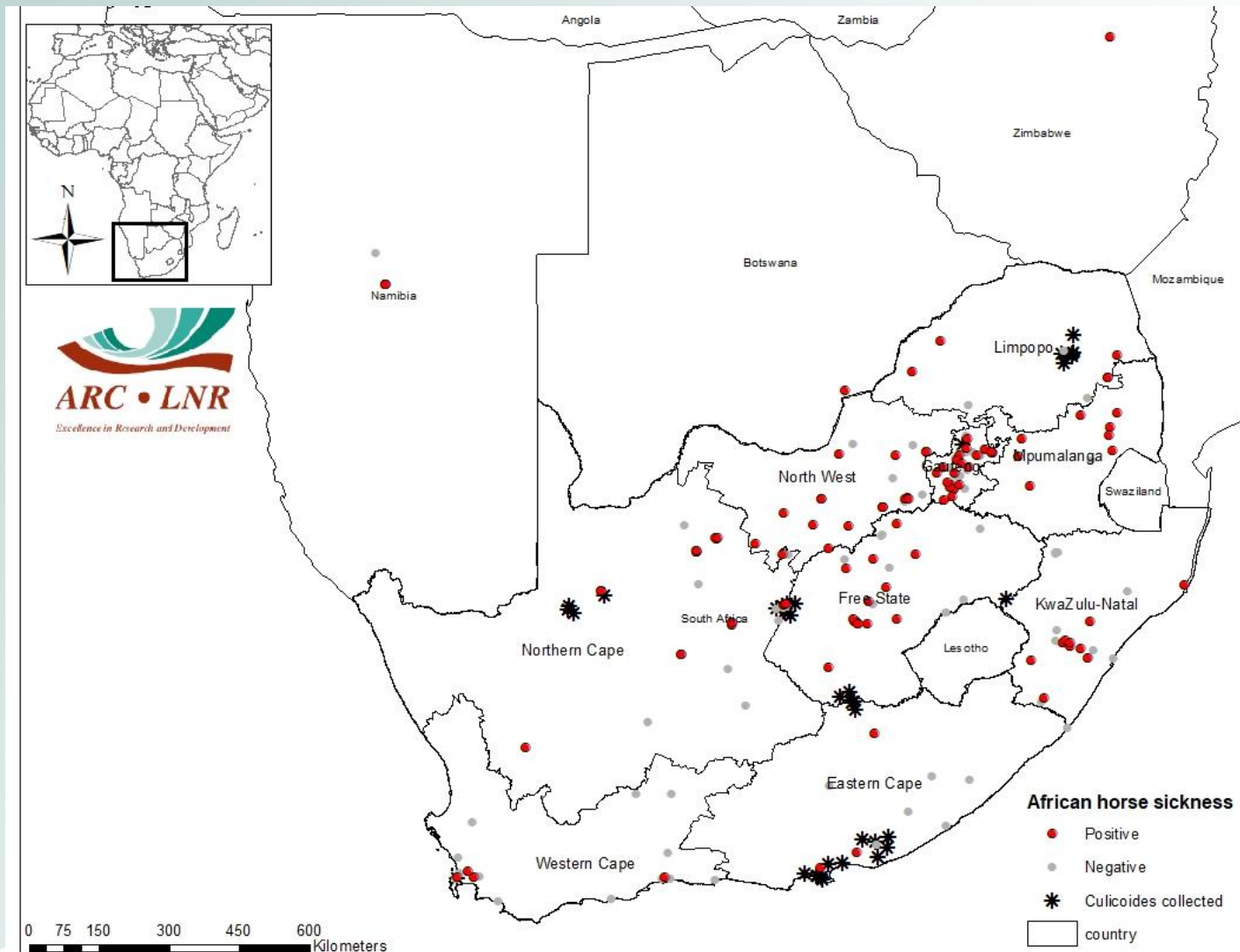
Number of samples per season: 665 (211 positive),

March & April 66% of positives tested

Species: AHSV in dog (1) rhino (1) and Zebra (4) samples

# EPIDEMIOLOGY

## Distribution maps

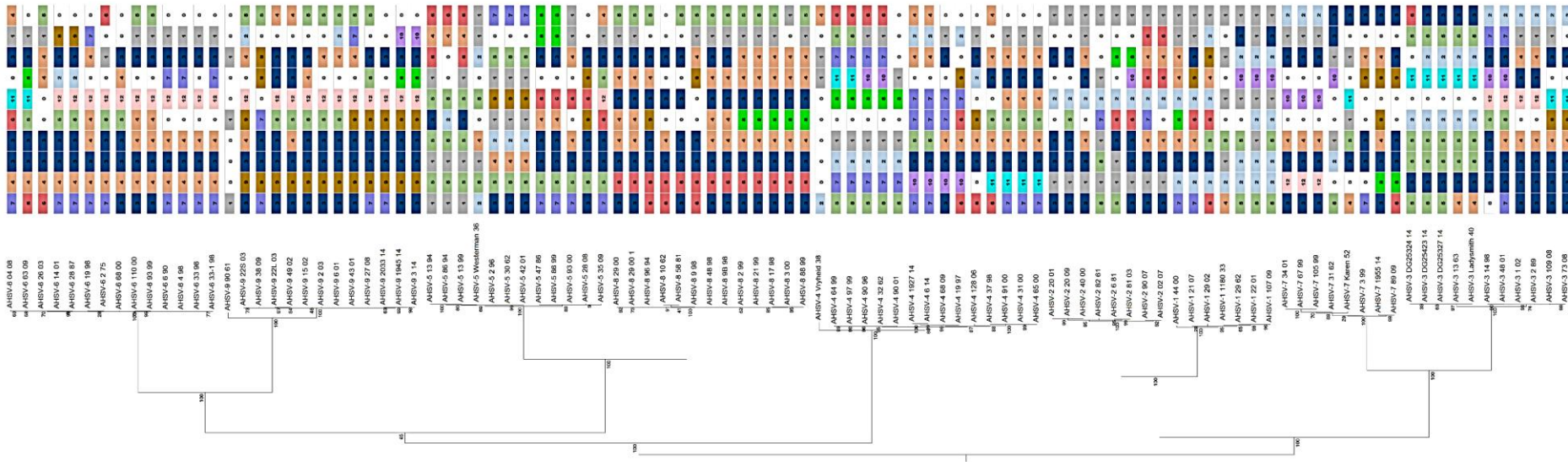




# RESEARCH PROJECTS

## Genetics and evolution of African horse sickness virus


### Genetic reassortments between viruses and its influence on vaccine efficacy



Virus Genes

<https://doi.org/10.1007/s11262-018-1567-y>

### A correlation between capsid protein VP2 and the plaque morphology of African horse sickness virus in cell culture

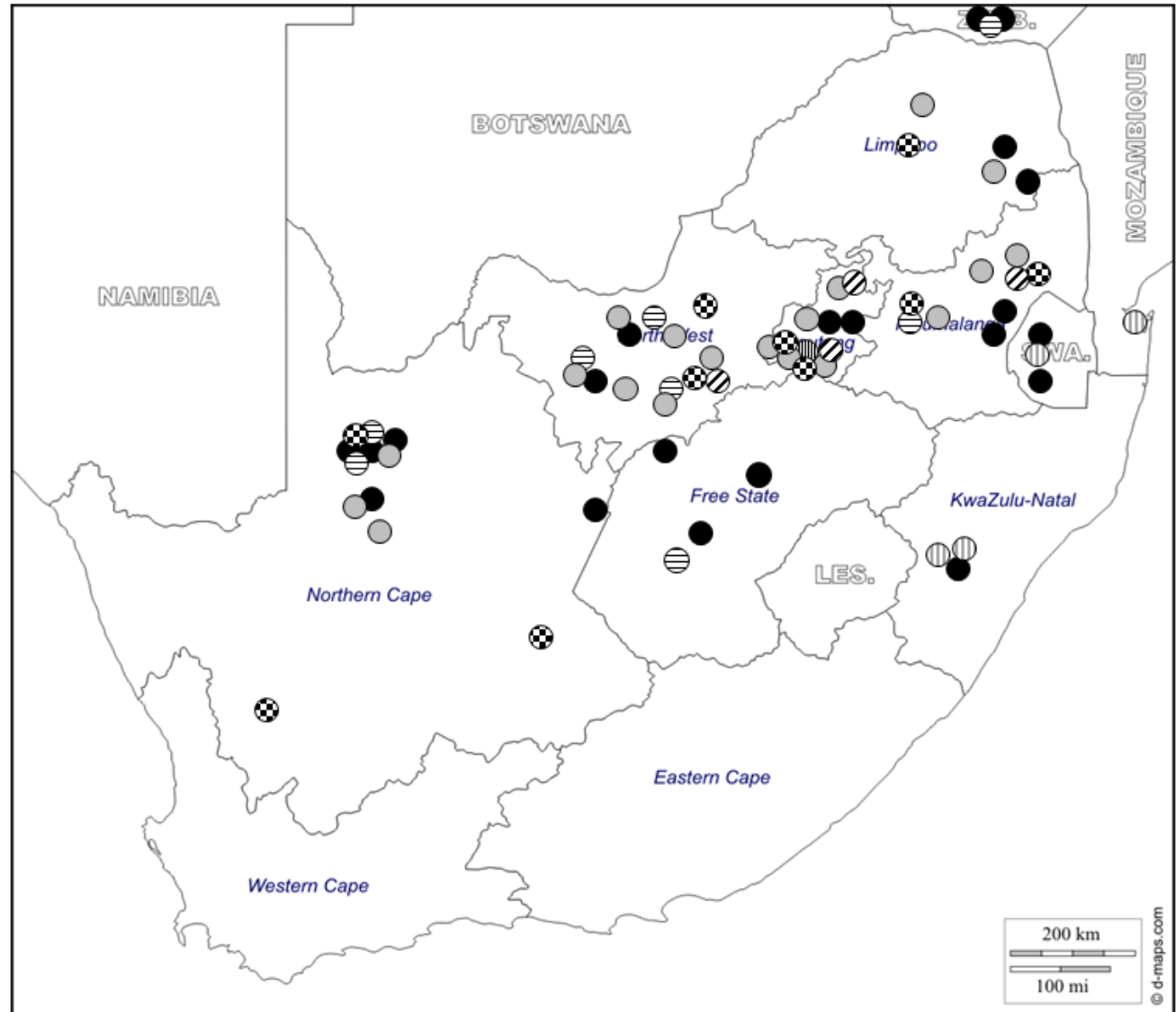
Mathilde L. Schade-Weskott<sup>1,2</sup>  · Antoinette van Schalkwyk<sup>1</sup> · J. J. O. Koekemoer<sup>1</sup>



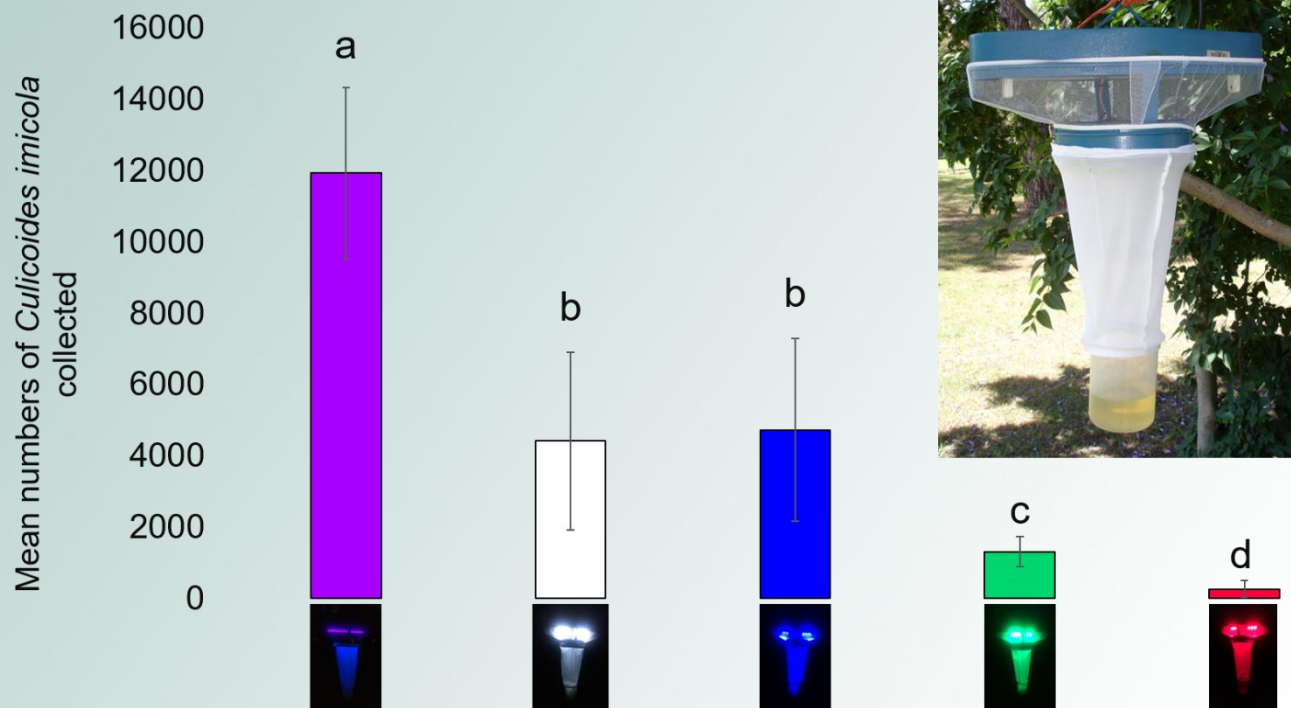
# New diagnostic test development

AHSV serotypes  
identified in 2016/2017

- ⊖ AHSV-1
- AHSV-2
- ⊖ AHSV-4
- AHSV-6
- ⊖ AHSV-7
- ⊘ AHSV-8
- ⊘ AHSV-9



# The efficiency of light traps for the collection of South African livestock associated *Culicoides* species



220 V Onderstepoort lights trap with different light sources (fluorescent UV & LED)

220V fluorescent UV traps were more efficient than 220V traps fitted with either red, white, blue or green LEDs for the collection of livestock associated *Culicoides* spp.

Similarly 220V fluorescent UV traps collected greater numbers of *Culicoides* than 12V fluorescent traps or 12V white, blue or green LED traps.

Despite lower number collected, 12V traps can be used in the field to effectively determine *Culicoides* spp composition, population age structure and the most abundant species in an area.

# OTHER SERVICES

---

Supply reference antigens and sera to perform inter laboratory comparison tests

Coordinate and participate in proficiency testing schemes

Maintain epidemiological database





# COLLABORATORS

---

University of South Africa – Faculty of Veterinary Science

Onderstepoort Veterinary Institute

University of Cape Town

EU Reference Laboratory for AHS

Internal:

Alison Lubisi - Virology and Serology

Marco Romito - PCR Diagnostics

Antoinette van Schalkwyk – Molecular studies, Serotype

Chantelle de Beer – Epidemiology, GIS Laura Lopez-

Rebollar – Registration, material shipment

Gert Venter (Retired) & Colleagues – Vector studies

