



# OIE

Reference Laboratory  
Network for PPR

Support given to OIE Members

Dr. Carrie Batten  
The Pirbright Institute  
Network secretariat



# Background

- The use of fit-for-purpose, validated **diagnostic methods** and of high quality **vaccines** is key to successfully control and eradicate PPR
- Ref labs need to continuously **update and maintain their capacity** to detect the virus and to support vaccination and surveillance programmes
- An OIE PPR ref lab network is needed to build **partnership** between labs (= communication platform)

# The OIE reference laboratory network for PPR



**OIE**  
Reference Laboratory  
Network for PPR

Officially launched by the OIE in November 2020

- **Coordination:** by the three OIE ref labs for PPR with rotating management / 3 years; currently: CIRAD
- **Membership:** open to all labs actively performing PPR diagnostic activities
- **Annual (on-line) meeting**
- **Annual newsletter (June)**
- **Annual report** of activities
- **Website** providing information on protocols, vaccines, reference material, ref lab activities (trainings, proficiency tests)



## Key objectives of the network

- Ensuring availability of **high quality laboratory tests** and maintaining a high quality performance by all laboratories.
- **Providing scientific and technical expertise** to organisations and countries on issues related to early preparedness and effective response.
- **Maintaining reagents, reference material**, sample and data collections, and **promoting material sharing** to support validation of diagnostic methods and sequencing efforts.
- Promoting the adoption and production of **high quality vaccines** and the development and application of more efficient and locally-adapted vaccination strategies.

# Major activities facilitated by the network



**OIE**  
Reference Laboratory  
Network for PPR

- Distribution of standard protocols
- Production and exchange of ref material, samples and data
- Providing confirmatory diagnostics
- Foster participation to proficiency tests
- Sharing info on new PPR diagnostic tools
- Access to high quality vaccine seeds
- Promote best practice in vaccine use and production
- Availability of experts for emergency or training
- Synergy with other PPR lab networks

# Current members



**OIE**  
Reference Laboratory  
Network for PPR

Country	Laboratory
International lab	CIRAD
International lab	Pirbright Institute
International lab	China Animal Health and Epidemiology Centre (CAHEC)
International lab	AU-PANVAC
International lab	Animal Production and Health Laboratory – Joint FAO/IAEA Centre on Nuclear Techniques in Food and Agriculture



# Current members



**OIE**  
Reference Laboratory  
Network for PPR

Cameroon	National Veterinary Laboratory (LANAVET)
India (North)	ICAR-IVRI Mukteswar
India (South)	ICAR-NIVEDI
Iran	Central Veterinary Laboratory (CVL)
Ivory Coast	Lanada
Kenya	Central Veterinary Laboratory
Morocco	Laboratoire Régional d'Analyses et de Recherches de Meknès
Nigeria	National Veterinary Research Institute (NVRI)
Pakistan	National Veterinary Laboratory



**OIE**  
Reference Laboratory  
Network for PPR

# Current members

Russia	ARRIAH
Saudi Arabia	MEWA
Senegal	Laboratoire National d'Elevage et de Recherches Vétérinaires (LNERV) de l'Institut Sénégalais de Recherches Agricoles (ISRA)
South Africa	OVI
Tanzania	Tanzania Veterinary Laboratory Agency (TVLA)

**TO JOIN:** go to the network website and fill in a form!

<https://www.ppr-labs-oie-network.org/about/list-of-member-laboratories>







## Coordination with other networks

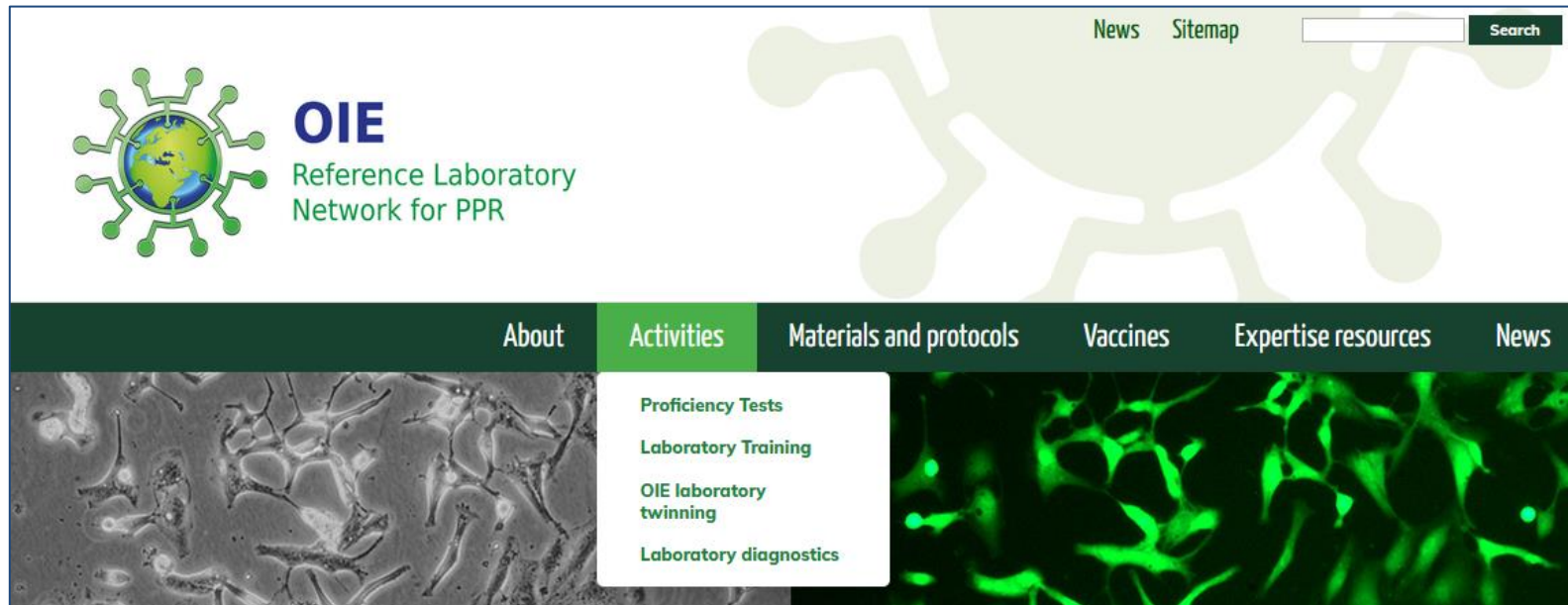
- Other international institutions involved in PPR eradication effort (AU-PANVAC, IAEA) members of the OIE network
- Close collaboration with the Veterinary Laboratory (VETLAB) Network coordinated by the Joint FAO/IAEA Centre as goals and activities of both networks partially overlap:
  - ✓ Information on VETLAB activities on OIE website and newsletter
  - ✓ Information on OIE network activities in VETLAB newsletter and events
  - ✓ Presentations of both networks activities during workshops and meetings

# The OIE PPR ref lab network website: main tool to support OIE members



**OIE**  
Reference Laboratory  
Network for PPR

Information on training, proficiency tests, diagnostic services, and expertise offered by reference labs



<https://www.ppr-labs-oie-network.org/>



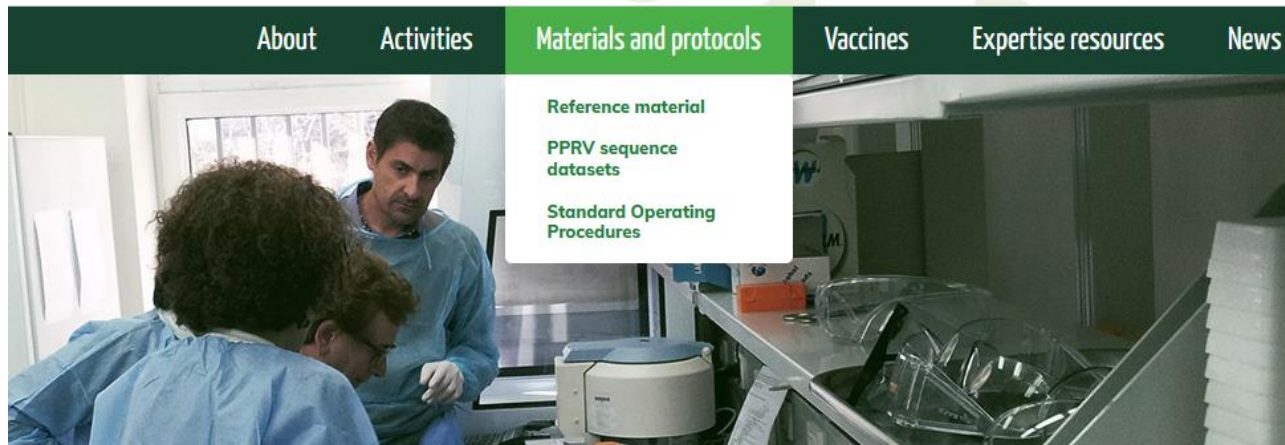
# The OIE PPR ref lab network website: main tool to support OIE members



**OIE**  
Reference Laboratory  
Network for PPR

List of reference material, downloadable standard protocols validated by the OIE ref labs for PPR

Curated, annually updated PPRV sequence datasets and guidelines for curation and submission on new sequences



<https://www.ppr-labs-oie-network.org/>



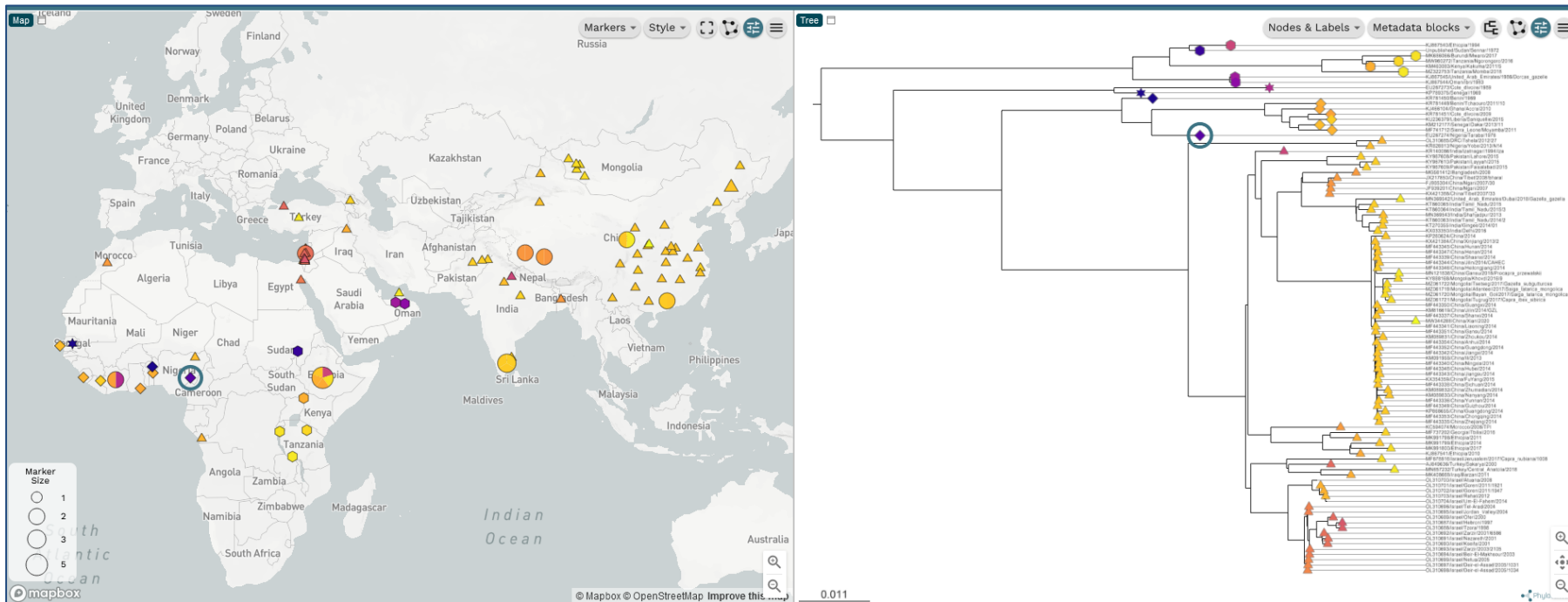
中国动物卫生与流行病学中心  
China Animal Health And Epidemiology Center

# The OIE PPR ref lab network website: main tool to support OIE members



**OIE**  
Reference Laboratory  
Network for PPR

Link to graphic representation of PPRV phylogeographic distribution  
(Microreact datasets)



<https://www.ppr-labs-oie-network.org/>

# The OIE PPR ref lab network website: main tool to support OIE members



**OIE**  
Reference Laboratory  
Network for PPR

Information on PPR vaccine, production, QC controls and access to Master Seed



<https://www.ppr-labs-oie-network.org/>



中国动物卫生与流行病学中心  
China Animal Health And Epidemiology Center

# Coming up



**OIE**

Reference Laboratory  
Network for PPR

- Adding to website library of pictures and videos of small ruminants with PPR symptoms from the field across the world to help disease surveillance in PPR-free OIE member countries
- First newsletter in June
- 2<sup>nd</sup> workshop end of 2022

**TO JOIN:** go to the network website and fill in a form!

<https://www.ppr-labs-oie-network.org/about/list-of-member-laboratories>



中国动物卫生与流行病学中心  
China Animal Health And Epidemiology Center