

Workshop for OIE National Focal Points for Veterinary Products
Johannesburg, South Africa, 23-26 November 2010

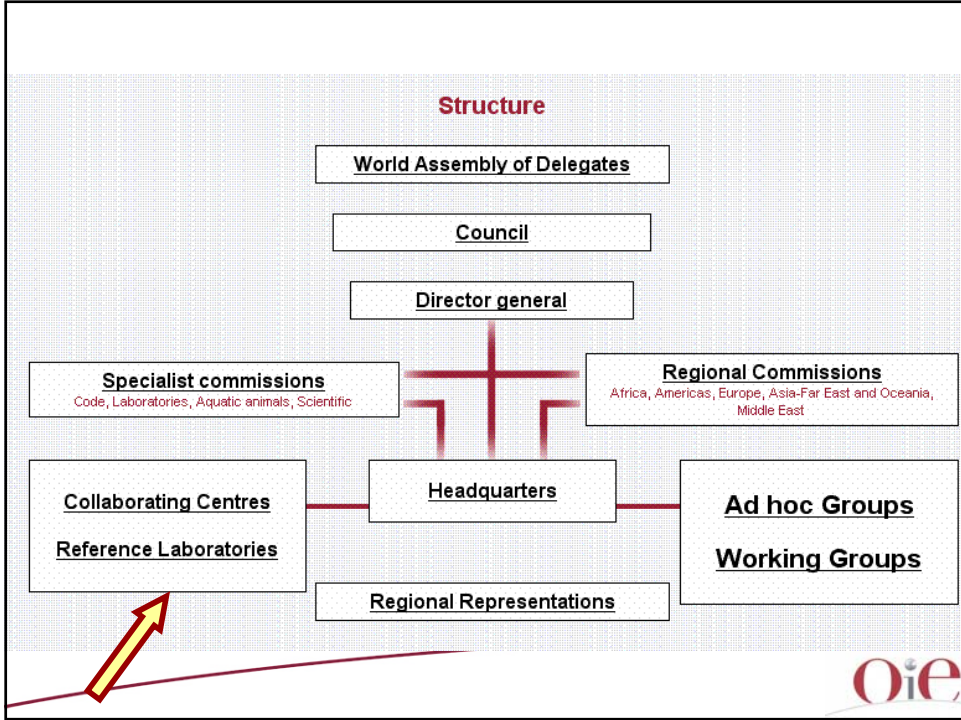
OIE Reference Laboratories and Collaborating Centres



Dr Elisabeth Erlacher-Vindel,
Deputy Head of the Scientific and Technical Department



Organisation Mondiale de la Santé Animale
World Organisation for Animal Health
Organización Mundial de la Salud Animal



World Organisation for Animal Health (OIE)

- **Recognition by the SPS Agreement of the World Trade Organization as international points of reference:**

- Diagnostics tests (*Manuals*)
- Disease free areas
- Surveillance (*Codes*)
- Disease control measures (*Codes*)

OIE Expertise of Reference Laboratories and Collaborating Centres





OIE Standards, Guidelines and Recommendations

- **Founded on:**
 - Objective criteria
 - Scientifically valid evaluations provided by independent experts
- **It was and is necessary to strengthen the OIE's expertise capabilities to respond even more effectively to the requirements of its Members**



1991: a network is born

- In response to a questionnaire, the Biological Standards Commission select 75 laboratories to be proposed for designation by the International Committee as OIE Reference Laboratories and one to be proposed as OIE Collaborating Centre
- Laboratories for diseases of aquatic animals were designated later
- In 1993 official mandates and rules were formally adopted

The OIE logo, consisting of the letters 'Oie' in a stylized font with a small globe icon above the 'i'.

1991: a network is born

- A network of expertise that could provide advice and aid on, for example:
 - technical and scientific matters
 - the basis for the setting of international standards
- International points of reference for disease diagnosis, prevention and control
- Constitutes the central core of the OIE's scientific excellence

The OIE logo, consisting of the letters 'Oie' in a stylized font with a small globe icon above the 'i'.

OIE Reference Laboratories & Collaborating Centres

- **OIE is committed to:**
 - expanding and strengthening this network of expertise
 - creating synergy so as to continue to meet the emerging challenges in a globalising world
- **All participating institutions in the network must share a common vision and regularly communicate**

Oie

OIE Reference Laboratories & Collaborating Centres

- **To enhance the scientific cooperation and to facilitate future interactions and networking OIE organised two meetings:**

The first International Conference of OIE Reference Laboratories and Collaborating Centres, Florianopolis (Brazil), 3-5 December 2006



Oie

OIE Reference Laboratories & Collaborating Centres

- **Second Global Conference of OIE Reference Laboratories and Collaborating Centres**
OIE Headquarters, Paris, France, 21–23 June 2010



Second Global Conference
of OIE Reference Laboratories
and Collaborating Centres
Paris (France), 21-23 June 2010

- http://www.oie.int/eng/A_VETO_PARIS_2010/Abstract/abstract.htm
- http://www.oie.int/eng/A_VETO_PARIS_2010/Abstract/Recommendations.htm

Oie

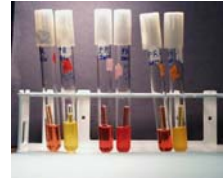
OIE Reference Laboratories and Experts

- **Must fulfil the role of centres of expertise and standardisation of methodology in their particular disease**
- **Centres for data processing, standardisation of diagnostic protocols, preparation and distribution of reference reagents, research, technical consultation and training**
- **The Expert should be a leading and active researcher**

Oie

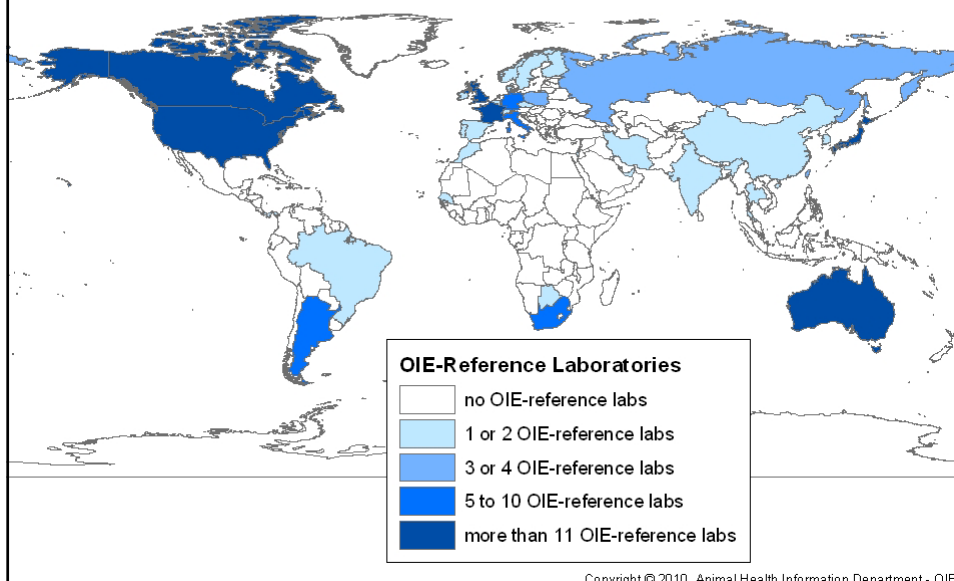
Reference Laboratories: evolution

- From 160 in 2006 to 190 in 2010
- in 36 Countries
- covering more than 101 diseases / topics
- 161 experts



OIE

World Distribution of the OIE- Reference Laboratories



Copyright © 2010, Animal Health Information Department - OIE

Mandate of OIE Reference Laboratories

- to function as a centre of expertise and standardisation for a designated disease(s) or topics;
- to store and distribute to national laboratories biological reference products and any other reagents used in the diagnosis and control of the designated disease(s) or topics;
- to develop new procedures for diagnosis and control of the designated disease(s) or topics;
- to gather, process, analyse and disseminate epizootiological data relevant to their speciality;
- to place expert consultants at the disposal of the OIE.

→ currently under review

OIE

Collaborating Centres: evolution

- From 20 in 2006 to 37 in 2010
- in 21 Countries
- covering 35 topics
- 37 experts (team leaders)



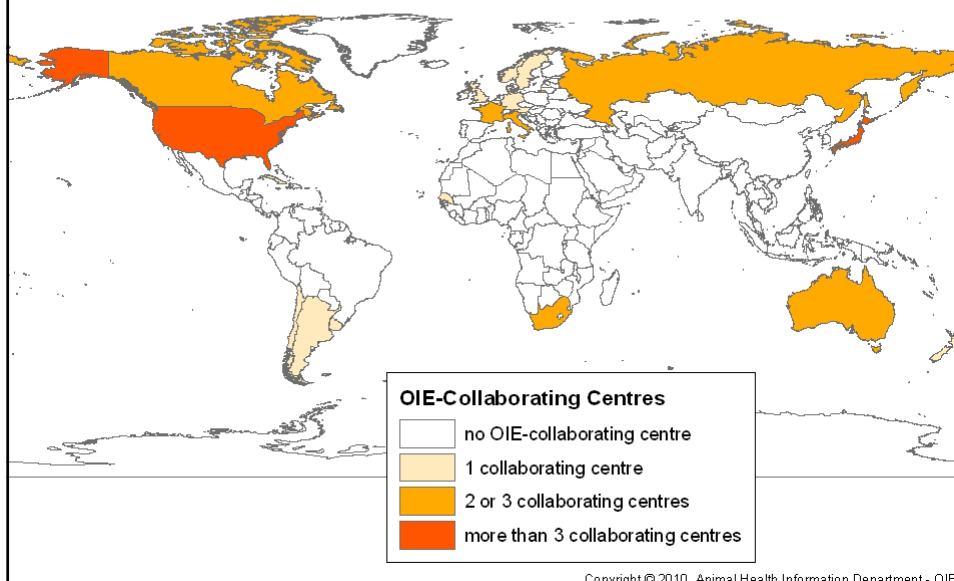
OIE

OIE Collaborating Centres

- Cover a specialised sphere of activities rather than a given animal disease
- Activities are global in coverage
- A large part of their work is of particular help to developing countries
- Not necessarily laboratory based

OIE

World Distribution of the OIE- Collaborating Centres



Copyright © 2010, Animal Health Information Department - OIE

Summary of the number of OIE Reference Laboratories and Collaborating Centres in 2010

	Reference Laboratories	Collaborating Centres	Total
Number	190	37	227
Countries	36	21	41*
Diseases or Topics	101	35	136
Experts	163	37	198

**Countries hosting both labs and Centres are not counted twice*



Reference Laboratories and Collaborating Centres: new policies

- Twinning**
- Networking**
- Specific projects**

OIE Reference Laboratories and Collaborating Centres related to veterinary products should be strongly involved



The Laboratory Twinning Programme

Each OIE Laboratory Twinning Project...

- Is a link between OIE Reference Laboratory or Collaborating Centre (Parent) and national laboratory (Candidate)
- Aims to improve expertise and diagnostic capacity with eventual aim of reaching OIE standards - Optimal goal is to achieve OIE Reference Laboratory designation
- Should be sustainable once the project is over



OIE

The Laboratory Twinning Programme

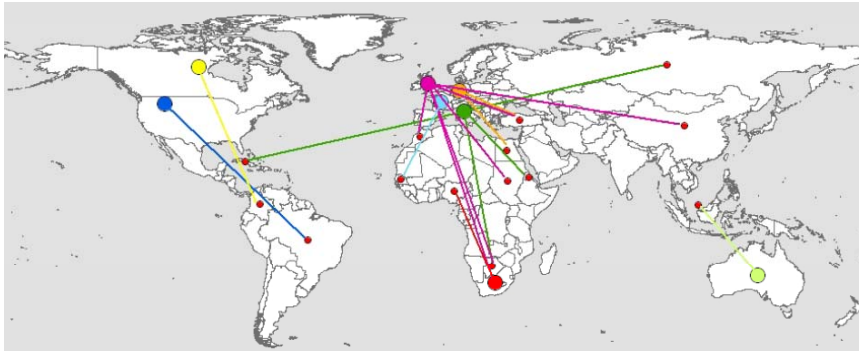
Extends the network of OIE capacity, expertise and standards

- To provide regional support with better geographical coverage for diseases and topics that are a priority in a given region
- Improved access for more countries to high quality diagnostics and expertise
- Better scientific expertise allows members to:
 - To debate OIE scientific justification for standards on an equal footing with other Members (better representation)
 - To contribute to build a veterinary scientific community world-



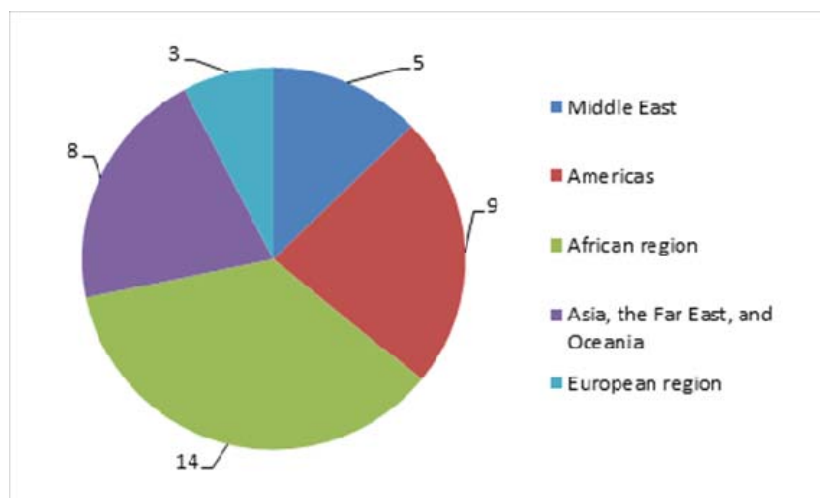
OIE

Twinning to achieve better geographical balance (May 2010)



Oie

Number of twinning projects by region



Oie

The OIE Network of Reference Laboratories and Collaborating Centres

Crucial role for OIE and its Members

- **Worldwide expertise**
- **Essential role in prevention, detection and control of animal diseases**
- **Supports OIE in the establishment of standards**
- **Strengthens OIE capability to respond to the new challenges**

→ international solidarity to help developing countries

OIE

Thank you for your attention



Organisation mondiale
de la santé animale

World Organisation
for Animal Health

Organización Mundial
de Sanidad Animal

12 rue de Prony, 75017 Paris, France - www.oie.int – oie@oie.int

