



 Organisation
Mandatée
de la Santé
Animale

 World
Organisation
for Animal
Health

 Organización
Mundial
de Sanidad
Animal

General presentation of the OIE

Workshop for OIE National Focal Points for
 Aquatic Animal Diseases
 June 15 - 19, 2010 Swakopmund, Namibia

Fauzi Kechrid
 Representative
 OIE SRR NA, Tunis





- An intergovernmental Organisation
- Founded in 1924 by 28 countries
- Precedes the U.N.

World Organisation for Animal Health

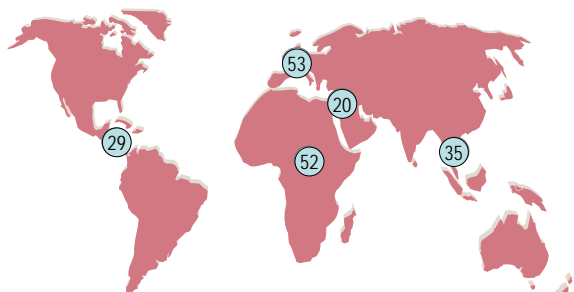
Common name adopted by the
International Committee on May 2003

Copyright (© OIE2008) 2

Members

Copyright (© OIE2008) 3

176 Members (May 2010)




Americas: 29 – Africa: 51 – Europe: 53 – Middle-East: 20 – Asia: 35
Some Members belong to more than one Region

Copyright (© OIE2008) 4

Contributions

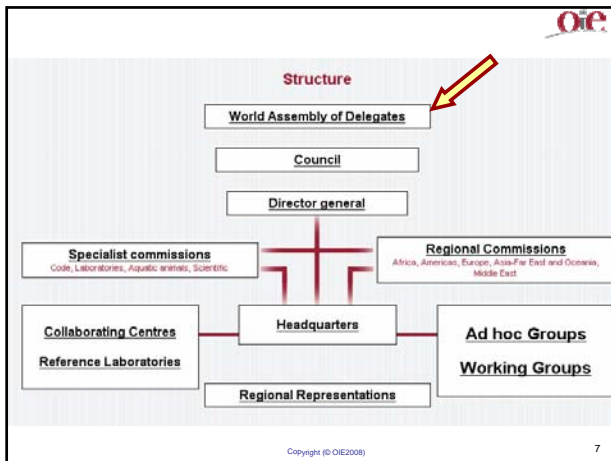
- ➔ **Ordinary**
 - 6 categories of Members
 - Special amount for poor countries
 - 10% for the Regions
- ➔ **Voluntary**
 - financing of specific activities (Regional and Sub-Regional Representations)...
 - World Fund for Animal Health and Welfare
 - Current main donors of the World Fund: World Bank, Japan, France, Italy, Australia, Canada, USA, United Kingdom, Switzerland



Copyright (© OIE2008) 5

Structure

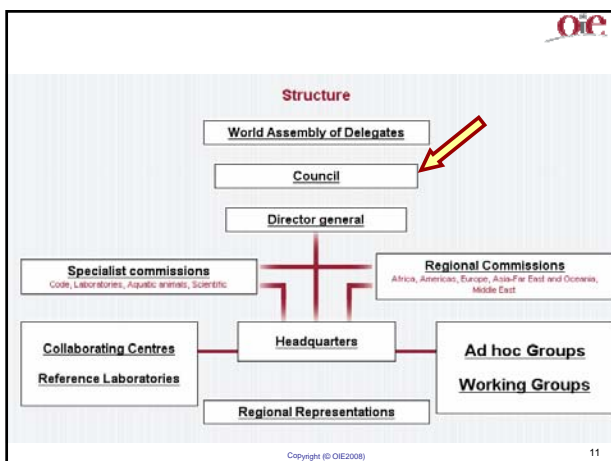
Copyright (© OIE2008) 6



-
- ### OIE World Assembly of Delegates
- The highest authority of the OIE
 - Comprises all the OIE Delegates
 - Meets at least once a year
 - Principle of 'one member, one vote'
 - Elects the members of the governing bodies of the OIE
 - Elects the members of the Specialist Commissions
 - Elects the Director General for a 5-year term
- Copyright (© OIE2008) 8

-
- ### OIE Delegate
- usually the Chief Veterinary Officer of his/her country
 - member of the World Assembly of Delegates (meets at the General Session)
 - focal point for the OIE in his/her country
 - responsible for harmonising his/her country's import regulation with OIE standards and/or basing them on scientific risk analysis
 - informs the OIE of the animal disease situation of his/her country
 - specific national and international status
- Copyright (© OIE2008) 9

-
- ### Focal Points
- National specialist focal points:
- ✓ Aquatic animal diseases
 - ✓ Wildlife
 - ✓ Animal health information systems
 - ✓ Veterinary products
 - ✓ Animal welfare
 - ✓ Animal production food safety
-
- Copyright (© OIE2008) 10



The Council

May 2009 - May 2012

President	Dr Carlos Correa Messuti (Uruguay)
Vice-President	Dr Carlos Agrela Pinheiro (Portugal)
Past President	Dr Barry O'Neil (New Zealand)
Members (Delegates)	Dr Brian Evans (Canada) Dr Florência Cipriano (Mozambique) Dr Rachid Bouguedour (Algeria) Dr Tenzin Dhendup (Bhutan) Dr Nikolay Vlasov (Russia) Dr Nasser Eddin Al-Hawamdeh (Jordan)

Copyright (© OIE2008) 12

The Council (cont.)

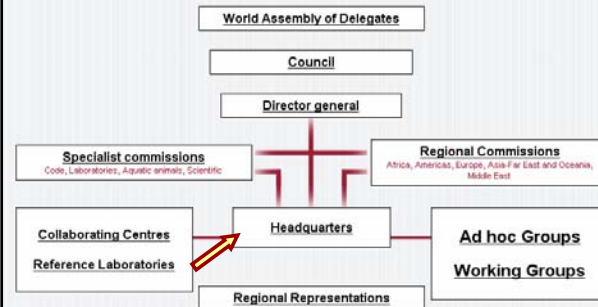


- board of management
- represents the World Assembly of Delegates in the interval between General Sessions
- examines technical and administrative matters to be presented to World Assembly of Delegates for approval:
 - programme of OIE technical work
 - OIE budget
- elected for a 3-year term (with the exception of the former President)

Copyright (© OIE2008)

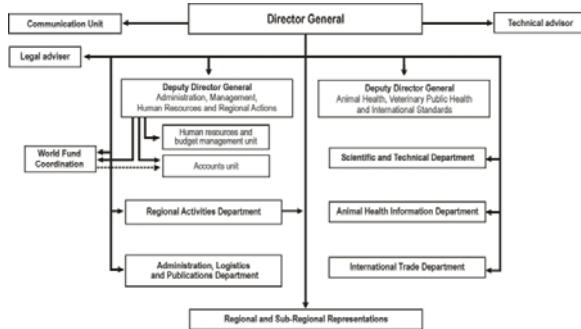
13

Structure



Copyright (© OIE2008)

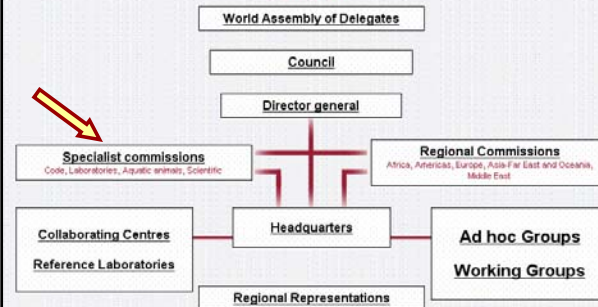
14



Copyright (© OIE2008)

15

Structure



Copyright (© OIE2008)

16

Specialist Commissions



Role is to use current scientific information to:



- study epidemiologic issues especially the prevention and control of animal diseases
- develop and revise OIE's international standards
- address scientific and technical issues raised by Members
 - but not bilateral trade problems (OIE may address these through the provision of scientific advice and through informal mediation)

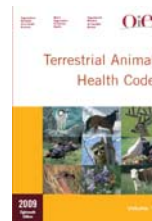
Copyright (© OIE2008)

17

Specialist Commissions (contd)



Terrestrial Animal Health Standards Commission "Code Commission"



Responsible for updating the *Terrestrial Animal Health Code* annually

Responsible for ensuring it reflects current scientific information

Copyright (© OIE2008)

18

Specialist Commissions (contd)



Scientific Commission for Animal Diseases "Scientific Commission"

Assists in identifying the most appropriate strategies and measures for:
disease surveillance

disease prevention and control methods

Examines **Members' submissions regarding their animal health status** for those countries that wish to be included on the OIE official list of free countries and zones for certain diseases

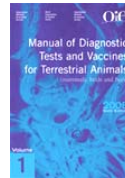
Copyright (© OIE2008)

19

Specialist Commissions (contd)



Biological Standards Commission "Laboratories Commission"



Establishes or approves methods for
diagnosing diseases of mammals, birds and bees

testing biological products, such as vaccines, used for control purposes

Oversees production of the *Manual of Diagnostic Tests and Vaccines for Terrestrial Animals*

Oversees the OIE global network of Reference Laboratories and Collaborating Centres (222 institutions)



Copyright (© OIE2008)

20

Specialist Commissions (contd)



Aquatic Animal Health Standards Commission "Aquatic Animals Commission"



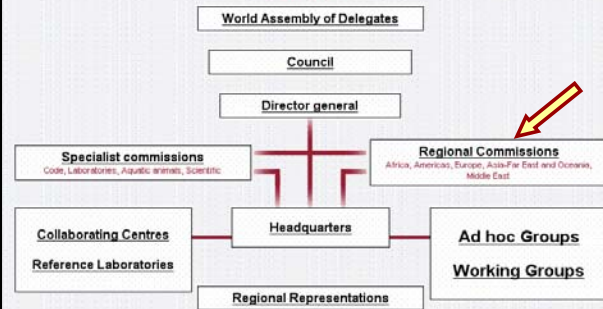
Compiles **information on diseases of fish, molluscs, crustaceans and amphibians, and on methods used to control these diseases**

Responsible for updating the *Aquatic Animal Health Code* and the *Manual of Diagnostic Tests for Aquatic Animals*

Copyright (© OIE2008)

21

Structure



Copyright (© OIE2008)

22

Regional Commissions

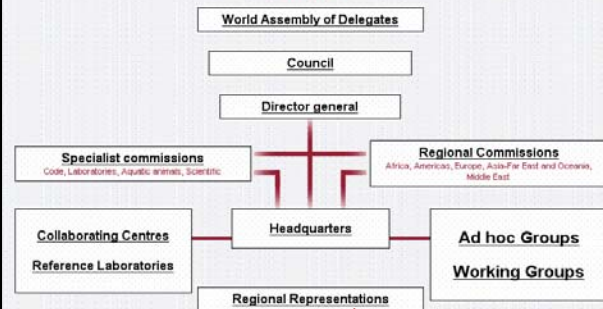


- AFRICA
- AMERICAS
- ASIA, FAR EAST and OCEANIA
- EUROPE
- MIDDLE EAST

Copyright (© OIE2008)

23

Structure



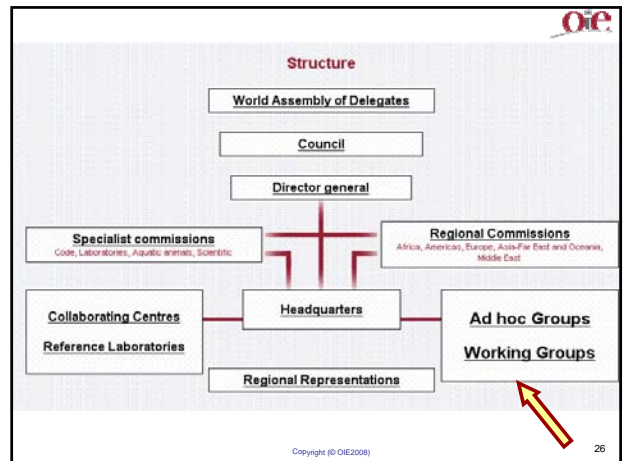
Copyright (© OIE2008)

24

OIE Regional and Sub-Regional Representations

Africa	Bamako, Mali Gaborone, Botswana Tunis, Tunisia Nairobi, Kenya
Americas	Buenos Aires, Argentina Panama City, Panama
Asia, Far East and Oceania	Tokyo, Japan Regional coordination Unit for the Southeast Asia FMD Campaign → Bangkok, Thailand Beijing, China?
Europe	Sofia, Bulgaria Brussels, Belgium
Middle East	Beirut, Lebanon

Copyright (© OIE2008) 25



The Working Groups

Wildlife Diseases

Animal Production Food Safety

Animal Welfare

Copyright (© OIE2008) 27

The Ad hoc Groups

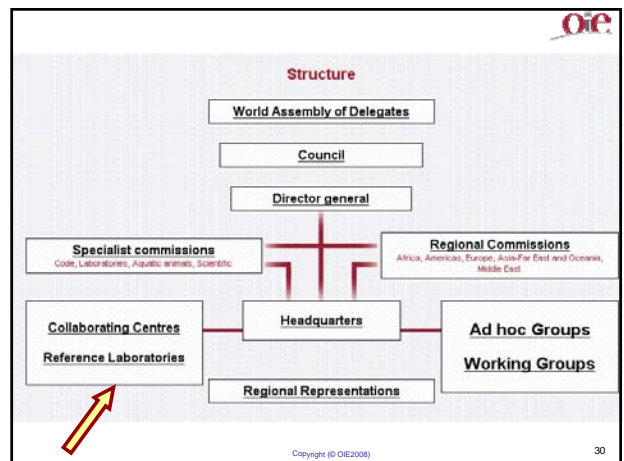
Set up, when needed,

- with world renowned scientists
- to prepare recommendations to the Specialist Commissions, Working groups and the World Assembly of Delegates

Copyright (© OIE2008) 28

Reference Laboratories & Collaborating Centres

Copyright (© OIE2008) 29



Reference Laboratories



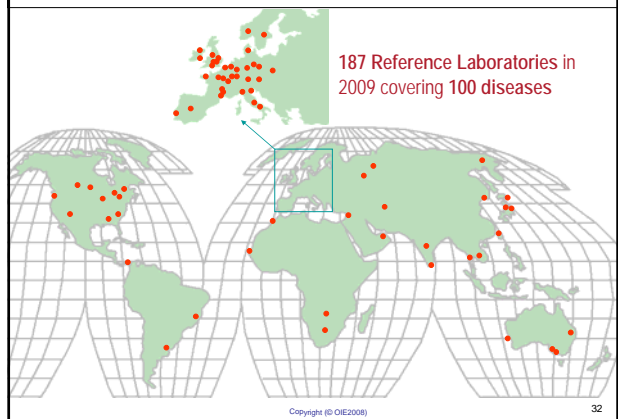
- 187 Reference Laboratories
- in 36 Countries
- covering 100 diseases or topics
- 161 experts (team leaders)



Copyright (© OIE2008)

31

Reference Laboratories network



Copyright (© OIE2008)

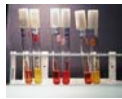
32

Reference Laboratories (cont.)



Expert Centres for worldwide standardisation

- Store and distribute **reference reagents**
- Develop / conduct / validate **diagnostic tests**
- Coordinate technical and scientific **studies**
- Provide technical and scientific **training**
- Organise **laboratory proficiency testing**



Copyright (© OIE2008)

33

Collaborating Centres



- 35 Collaborating Centres
- in 20 Countries
- covering 33 topics
- 35 experts (team leaders)

Copyright (© OIE2008)

34

Collaborating Centres network



35 Collaborating Centres covering 33 topics



Copyright (© OIE2008)

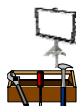
35

Collaborating Centres (cont.)



Centres of expertise on 'horizontal subjects':

- Assist in the elaboration of **procedures** to harmonise animal disease regulations / international standards
- Coordinate collaborative **studies**
- Provide technical **training**
- Organise and host **scientific meetings** for the OIE



Copyright (© OIE2008)

36

New policies Reference Laboratories and Collaborating Centre



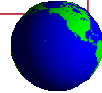
- ✓ Twinning
- ✓ Networking
- ✓ Specific projects



Copyright (© OIE2008)

37

International Relationships



Copyright (© OIE2008)

38

International Relationships



Permanent institutional cooperation with

- WHO World Health Organization
- FAO Food and Agricultural Organization of the United Nations
- WTO World Trade Organization
- CAC Codex Alimentarius Commission
- IPPC International Plant Protection Convention
- World Bank
- CABI CAB International
- ILRI International Livestock Research Institute

Copyright (© OIE2008)

39

International Relationships (cont.)



Technical and scientific cooperation with more than 20 regional organisations and international industry and professional associations

Regional Organisations:

Andean Community	European Commission
AOAD	IICA
AU-IBAR	OIRSA
CEBEVIRHA	PVC
SPC	PAHO
ECOWAS	SADC

Copyright (© OIE2008)

40

International Relationships (cont.)



World industry and professional organisations

- IMS International Meat Secretariat
- IDF International Dairy Federation
- FEI International Equestrian Federation
- ICCM International Committee of Military Medicine
- IEC International Egg Commission
- IFAH International Federation for Animal Health
- IFAP International Federation of Agricultural Producers
- IABs International Association for Biologicals
- WVA World Veterinary Association
- WAVLD World Association of Veterinary Laboratory Diagnosticians

Many new agreements are in the pipeline.

Copyright (© OIE2008)

41

OIE Publications & Web Site

Copyright (© OIE2008)

42

Publications of the OIE



Bulletin *every 3 months*

Scientific and Technical Review *every 4 months*

World Animal Health *every year*

**Technical items, Newsletters,
Specialised books** *variable*



Copyright (© OIE2008)

43

On the OIE Web Site...



- Early warning
- Weekly Disease Information
- International Standards (Codes, Manuals, etc.)
- Scientific and Technical Review (contents and abstracts)
- Scientific and general information on OIE activities
- Animal diseases and zoonoses
- Editorials from the Director General

<http://www.oie.int>



Copyright (© OIE2008)

44

Thank you for your attention



Organisation mondiale
de la santé animale

World Organisation
for Animal Health

Organización Mundial
de Sanidad Animal

12 rue de Prony, 75017 Paris, France - www.oie.int - oie@oie.int

Copyright (© OIE2008)

45