


  
 Organization Mandate World Organization for Animal Health Organisation Mondiale de Santé Animale

## WORLD ANIMAL HEALTH INFORMATION SYSTEM AND DATABASE (WAHIS & WAHID) & WAHIS REGIONAL CORE CONCEPT


 World Animal Health Information System  
 Système mondial d'information zoosanitaire  
 Sistema Mundial de Información Zoonosanitaria


Dr Karim Ben Jebara  
 Head  
 Animal Health Information Department  
 OIE


 Animal Health Information Information zoosanitaire Información Zoonosanitaria

OIE Regional Training Seminar for Focal points on aquatic animals 15 to 19 June 2010, Swakopmund, Namibia


## GENERAL OBJECTIVES OF THE SYSTEM

**Immediate notifications and Follow-ups**



 ⇒ **OIE's early warning system**

International alert messages ⇒ **Rapid response**

**Regular information through six-monthly and annual reports**



 ⇒ **OIE's monitoring system**

**To monitor OIE Listed diseases (presence or absence) over time**




## TYPES OF REPORTS

- 1 **Immediate notification** of disease, infection or unusual epidemiological events
- 2 **Weekly reports:** Follow-ups to the immediate notification
- 3 **Final report :**
  - if the outbreaks have ended
  - if the situation becomes endemic
- 4 **Six-monthly report**
- 5 **Annual report**




**early warning**


**monitoring**



## IMMEDIATE NOTIFICATIONS



## OIE'S EARLY WARNING SYSTEM

**Immediate notification** ⇒ **within 24 hours** 

↓


**Follow-up report** ⇒ **weekly report**

↓


Follow-up to the immediate notification to inform on changes in the epidemiological situation

↓


**Final report**



## REASONS FOR IMMEDIATE NOTIFICATION – WITHIN 24 HOURS



- 1 - The **first occurrence / re-occurrence** of a **listed disease and/or infection** in a country or zone/compartament



## REASONS FOR IMMEDIATE NOTIFICATION – WITHIN 24 HOURS



**2** - for diseases listed by the OIE, if the disease has occurred in a **new host species**; or

**3** - for diseases listed by the OIE, if the disease has occurred with a **new pathogen strain** or in a new disease manifestation; or



## REASONS FOR IMMEDIATE NOTIFICATION – WITHIN 24 HOURS

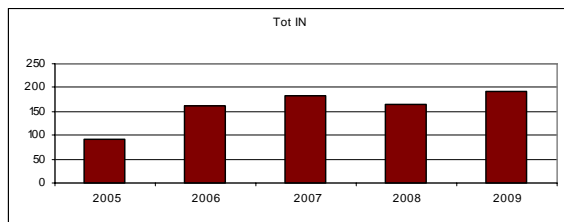


**4** - for diseases listed by the OIE, if the disease has a newly recognised **zoonotic potential**; or

**5** - for diseases **not listed by the OIE**, if there is a case of an **emerging disease** or pathogenic agent should there be findings that are of epidemiological significance to other countries.



## OIE IMMEDIATE NOTIFICATIONS



## SIX-MONTHLY REPORTS



## OIE's monitoring system

### Six-monthly report

on the **absence or presence** of listed diseases



#### Part 1: Qualitative information

- disease **occurrence**;
- **control, prophylaxis and prevention measures**;
- **indication of the type of template to use** to notify diseases or infections/infestations present in the country (=> part 2).



## OIE's monitoring system

### Six-monthly report

on the **absence or presence** of OIE listed diseases



#### Part 2: Quantitative information

- **Template 1**: By first administrative division and by month;
- **Template 2**: For the whole country by month;
- **Template 3**: By first administrative division for the six months period;
- **Template 4**: For the whole country for the six-months period.



## ANNUAL REPORTS



## OIE's monitoring system

### Annual report



The sum of information of the two six-monthly reports of a given year

and:

- **Non OIE-listed diseases;**
- **Human resources in Veterinary Services;**
- **National Reference Laboratories;**
- **Livestock census** (by first administrative division);
- **Zoonoses** (human cases and deaths);
- Production of **vaccines**.



Organisation Mondiale de la Santé Animale / World Organisation for Animal Health / Organización Mundial de Sanidad Animal

## WORLD ANIMAL HEALTH INFORMATION SYSTEM WAHIS



## World Animal Health Information System (WAHIS)

WAHIS, is the new OIE's world animal health information system.

An access (login, password) is given to each Delegate. He/she has the possibility to create an access to his/her nominees.

Address:  
[www.oie.int/wahis](http://www.oie.int/wahis)



## WAHIS online notification

- **WAHIS**
  - Provides countries with a simpler and quicker method of sending sanitary information => compliance countries with their international obligations vis-à-vis the OIE
  - Allows countries to benefit from the new capabilities put in place to produce essential and useful information while minimizing possible errors or delays
  - Countries' data benefit from the systems reliability and safety



## World Animal Health Information System (WAHIS)

Access to WAHIS application allows users from Member Countries and Territories, namely Delegates or their nominees, to electronically submit notification reports:

- immediate notifications
- follow-up reports
- six-monthly reports
- annual reports



## WAHIS – Delegate's first steps

**Welcome**

Before using the OIE World Animal Health Information System (WAHIS), there are a number of important configuration options that must be completed for your country. This need only be done once, but should be verified once a year, but if any of the parameters change in future, you can always update them at any time from the main menu of the system.

**User Parameters**

You can contact details and setting up other authorised users of WAHIS

One of the most important functions of OIE and WAHIS is to inform member countries of important disease events. To achieve this, it is essential that we have up-to-date contact details for all delegates and CVOs.

You can also set up user accounts which allow authorised members of your staff to access the system on your behalf. Management of these accounts is your responsibility, but it is important that each person using the system has their own account (never allow anybody else to log in with your (or anybody else's) username and password). You can authorise users to enter and submit information on only terrestrial animals, only aquatic animals or both, and also specify which types of reports they are authorised to submit (immediate notifications, immediate reports and annual questionnaires).

**Country Parameters**

Setting up country default values

Every country is different. This section allows you to set up parameters so that the system will function in a way that makes sense for your country.

**Administrative Subdivisions**

Editing the list of administrative subdivisions used for disease reporting

In the reports, the geographical location of the outbreak(s) should be specified. This system uses a combination of on-line interactive maps to determine the coordinates of a disease event, as well as named administrative subdivisions (such as states, provinces, districts etc.).

This system maintains a list of the names of first (and optionally second) level administrative subdivisions for disease reporting. As the lists of administrative subdivisions change frequently, and it is often difficult to access information on the latest lists from outside a country, it is the delegate's or CVOs responsibility to ensure that the list used for reporting to the OIE is kept up to date.

**Administrative Subdivisions**

## WAHIS – First Steps

Message ID	Message Name	Category	Date Created	Subject	Action
25022019	Other	Other	25/02/2019	OIE Disease Information - Informaciones Sanitarias - Informaciones Sanitarias	

Message ID	Message Name	Category	Date Created	Subject	Action
25022019	Newcastle disease	Immediate Notification or Follow-up Report	25/02/2019	PER 25-02-19 OIE Alert - Alerta - Newcastle disease - Malaise de Newcastle - Enfermedad de Newcastle	
01032019	Foot and mouth disease	Immediate Notification or Follow-up Report	01/03/2019	CHN 01-03-19 OIE Alert - Alerta - Foot and mouth disease - Fiebre aftosa - Fiebre aftosa	

## WAHIS 2 – Immediate Notification

**1: Submit a New Immediate Notification**

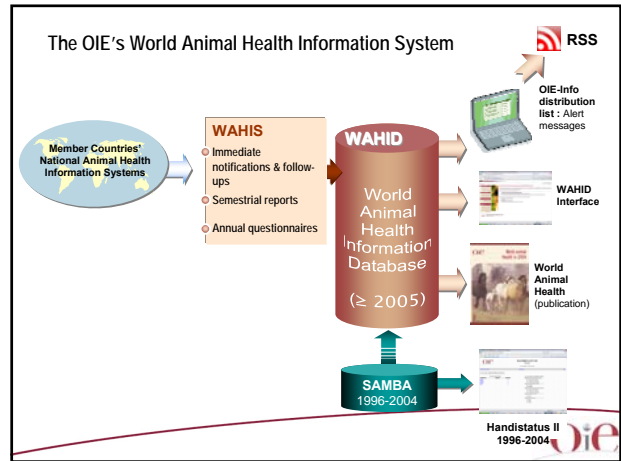
Country/Territory: France

Animal type:  Terrestrial  Aquatic

Reason for notification: **First occurrence of a listed disease**

Report applies to:  First occurrence of a listed disease  Recurrence of a listed disease  Listed disease occurring in new host species  New pathogen strain or disease manifestation  Emerging disease  Newly recognised zoonotic potential

User Feedback: Email the support team if you have a comment on this system.



**WORLD ANIMAL HEALTH INFORMATION DATABASE**

**WAHID Interface**

Animal Health Information  
Información zoonositaria  
Información Zoonositaria

## WORLD ANIMAL HEALTH INFORMATION DATABASE (WAHID)

<http://www.oie.int/wahid>

**Alerts - Disease Information**

- Pandemic Influenza A H1N1 (2009) in Swine - Highly pathogenic
- Update on avian influenza in animals
- Update on swine influenza in animals

**Highlights**

- OIE Conference Day Award - 3rd edition
- OIE Conference on Veterinary Medicinal Products in the Middle East - Putting a halt to the misuse of veterinary medicinal products
- 20th Conference of the Regional Commission for Asia and the Pacific

**OIE Publications**

- Online Bookshop
- Available online
- Available
- One World, One Health

## WORLD ANIMAL HEALTH INFORMATION DATABASE (WAHID)



The WAHID Interface provides access to all data held within OIE's new World Animal Health Information System (WAHIS). It replaces and significantly extends the former web interface named Handistatus II System.



## WORLD ANIMAL HEALTH INFORMATION DATABASE (WAHID)



A comprehensive range of information is available from:

- Immediate notifications and follow-up reports submitted by Member Countries in response to exceptional disease events occurring in these countries as well as follow-up reports about these events,
- Six-monthly reports describing the OIE-listed disease situations in each country
- Annual reports providing further background information on animal health, animal production, laboratory and vaccine production facilities, etc.



## WORLD ANIMAL HEALTH INFORMATION DATABASE (WAHID)

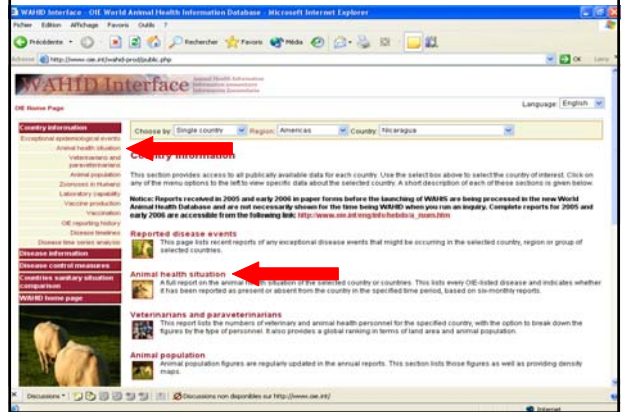


The international community can explore available information:

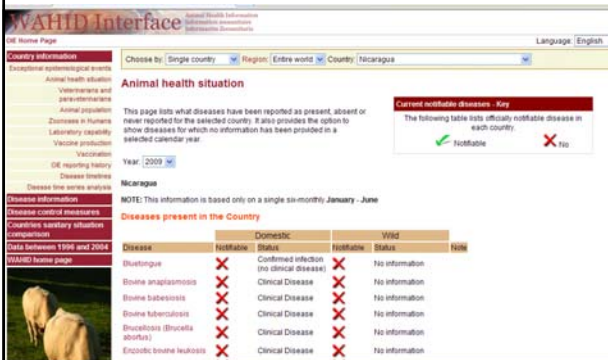
- by country (or group of countries),
- by disease,
- focusing on control measures, or
- comparing the animal health situation between two countries.



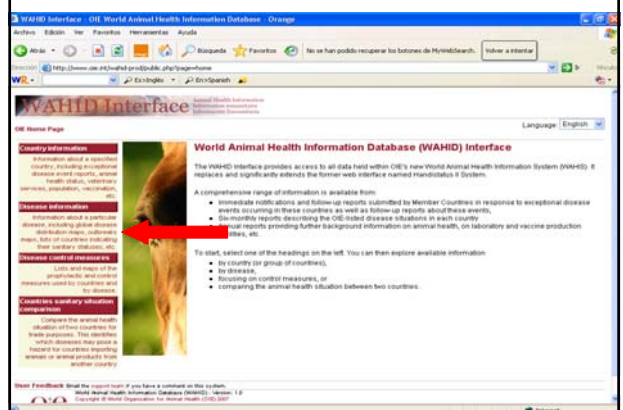
## Country information: Animal Health Situation



## Country information: Animal Health Situation



## Disease information



### Disease information

**WAHID Interface - OIE World Animal Health Information Database**

**Disease information**

This section provides information about specific diseases. Use the select box above to select the disease of interest, then click on any of the menu options on the left to view different types of information about that disease.

OIE keeps an archive of all immediate notifications and weekly reports in PDF format available for download. This section gives you access to immediate notifications, weekly reports, and OIE special reports containing information not normally contained within the other types of reports.

**Notice: Reports received in 2009 and early 2010 in paper form before the launching of WAHIS are being processed in the new World Animal Health Database and are for the time being not shown in WAHID when you run an enquiry. Complete reports for 2009 and early 2010 are accessible from the following link: [http://www.oie.int/ahis/index.htm](#).**

**Immediate notifications and Follow-up**

This report provides a list of all reported disease events, and allows you to progressively find more detail about a particular event - lists of all outbreaks associated with the event, and related information about a particular outbreak. It also provides a link to the full immediate notification or follow-up reports for that event.

**Weekly Disease Information**

The weekly reports provide a summary of all immediate notifications and follow-up reports for unusual disease events submitted by reporting Member Countries, by week. This is a good place to check what has been happening around the world.

**Report archive**

OIE keeps an archive of all immediate notifications and weekly reports in PDF format available for download. This section gives you access to immediate notifications, weekly reports, and OIE special reports containing information not normally contained within the other types of reports.

**Disease outbreak maps**

These maps indicate the location of disease events reported in immediate notifications or follow-up reports. As with the previous maps, you can zoom in to examine an area of outbreak in more detail. You can also see the available details about a given outbreak by clicking on the map.

**Disease distribution maps**

Dynamic maps showing the geographical distribution of a disease at the national and sub-national level. Information is based on six-monthly reports. These maps are interactive so you can see the global situation, then zoom in on a specific region, country or locality.

**Detailed country disease incidence**

This section provides a detailed view of the disease incidence in a specific country. It includes information on the number of cases, the date of onset, and the type of outbreak.

### Disease outbreak maps - HPAI

**WAHID Interface - OIE World Animal Health Information Database**

**Disease outbreak maps - HPAI**

**Country information**

Choose Disease:  Terrestrial: **Highly path. avian influenza**  
 Aquatic: **Avian influenza**

**Weekly Disease Information**

Report archive  
 Disease outbreak maps  
 Disease distribution maps  
 Detailed country (ies) disease incidence  
 Lists of countries by sanitary situation  
 Disease timelines

**Disease outbreak maps**

These maps indicate the location of disease events reported in immediate notifications or follow-up reports. As with the previous maps, you can zoom in to examine an area of outbreak in more detail. You can also see the available details about a given outbreak by clicking on the map.

**Disease distribution maps**

Dynamic maps showing the geographical distribution of a disease at the national and sub-national level. Information is based on six-monthly reports. These maps are interactive so you can see the global situation, then zoom in on a specific region, country or locality.

### Disease outbreak maps - ISA

**WAHID Interface - OIE World Animal Health Information Database**

**Disease outbreak maps - ISA**

**Country information**

Choose Disease:  Terrestrial: **Salmonellosis**  
 Aquatic: **Infectious salmon anaemia**

**Weekly Disease Information**

Report archive  
 Disease outbreak maps  
 Disease distribution maps  
 Detailed country (ies) disease incidence  
 Lists of countries by sanitary situation  
 Disease timelines

**Disease outbreak maps**

These maps indicate the location of disease events reported in immediate notifications or follow-up reports. As with the previous maps, you can zoom in to examine an area of outbreak in more detail. You can also see the available details about a given outbreak by clicking on the map.

**Disease distribution maps**

Dynamic maps showing the geographical distribution of a disease at the national and sub-national level. Information is based on six-monthly reports. These maps are interactive so you can see the global situation, then zoom in on a specific region, country or locality.

### Disease distribution map - FMD

**WAHID Interface - OIE World Animal Health Information Database**

**Disease distribution map - FMD**

**Country information**

Choose Disease:  Terrestrial: **Foot and mouth disease**  
 Aquatic: **None**

**Weekly Disease Information**

Report archive  
 Disease outbreak maps  
 Disease distribution maps  
 Detailed country (ies) disease incidence  
 Lists of countries by sanitary situation  
 Disease timelines

**Disease distribution maps**

Dynamic maps showing the geographical distribution of a disease at the national and sub-national level. Information is based on six-monthly reports. These maps are interactive so you can see the global situation, then zoom in on a specific region, country or locality.

### Disease distribution map - ISA

**WAHID Interface - OIE World Animal Health Information Database**

**Disease distribution map - ISA**

**Country information**

Choose Disease:  Terrestrial: **Salmonellosis**  
 Aquatic: **Infectious salmon anaemia**

**Weekly Disease Information**

Report archive  
 Disease outbreak maps  
 Disease distribution maps  
 Detailed country (ies) disease incidence  
 Lists of countries by sanitary situation  
 Disease timelines

**Disease distribution maps**

Dynamic maps showing the geographical distribution of a disease at the national and sub-national level. Information is based on six-monthly reports. These maps are interactive so you can see the global situation, then zoom in on a specific region, country or locality.

### Disease control measures

**WAHID Interface - OIE World Animal Health Information Database**

**Disease control measures**

**Country information**

Choose Disease:  Terrestrial: **Salmonellosis**  
 Aquatic: **Infectious salmon anaemia**

**Weekly Disease Information**

Report archive  
 Disease outbreak maps  
 Disease distribution maps  
 Detailed country (ies) disease incidence  
 Lists of countries by sanitary situation  
 Disease timelines

**Disease control measures**

This section provides information on the control measures implemented by Member Countries in response to exceptional disease events occurring in their countries, as well as follow-up reports about these events.

**World Animal Health Information Database (WAHID) Interface**

The WAHID Interface provides access to all data held within OIE's new World Animal Health Information System (WAHIS). It replaces and significantly extends the former web interface named Handistatus 2 System.

A comprehensive range of information is available from:

- Immediate notifications and follow-up reports submitted by Member Countries in response to exceptional disease events occurring in their countries, as well as follow-up reports about these events;
- Six-monthly reports describing the OIE listed disease situations in each country;
- Annual reports providing further background information on animal health, on laboratory and vaccine production facilities, etc.

To start, select one of the headings on the left. You can then explore available information:

- by country (or group of countries),
- by week,
- using an outbreak timeline, or
- comparing the animal health situation between two countries.

### Disease control measures

**Disease control measures**

Choose by: Single country | Region: Entire world | Country: Namibia

Choose Disease:  Terrestrial |  Aquatic

Year: 2009 | Report: Jan-Jun | OK

**Disease control measures**

Place the mouse over control measure links in the table below to see the meaning of each code

Country	Species	M	Q	H	Ta	GDc	TSw	Qr	S	Sp	Z	Vp	T	Cr	On
Namibia	Fish														
	Wild fish														

### Publications

**World Animal Health 2007**

**World Animal Health 2008**

**“TRACKING”**  
OIE's Active Search and Verification  
of non official Animal Disease Information

Animal Health Information Department

### Mandate

In application of the DG's Work Programme adopted by the OIE International Committee during the 69th Assembly of Delegates (May 2001), the OIE Headquarters are authorised to question any Delegate of a Member Country or Territory regarding animal health incidents reported in the media (newspapers, scientific journals, ProMed, etc.)

### “TRACKING”

OIE's Active Search and Verification of non official Animal Disease Information

- Improve transparency of the animal health situation worldwide
- Improve the efficiency of the OIE's Early Warning System for better animal disease awareness and preparedness

### Tracking Activities

- Actively search unofficial sources
- Verify with OIE Delegates
- Improves Early Warning

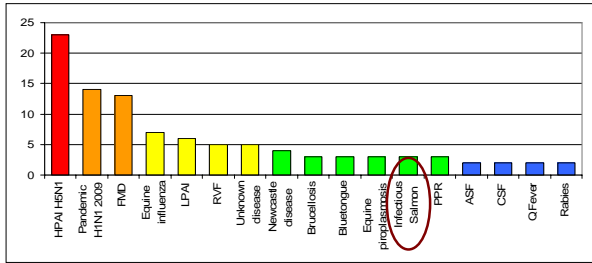
Number of enquiries related to non-official information between 2002 & 2009

Year	Answers	No answer	Total
2002	15	15	30
2003	20	15	35
2004	35	25	60
2005	45	35	80
2006	55	45	100
2007	65	55	120
2008	75	45	120
2009	85	25	110

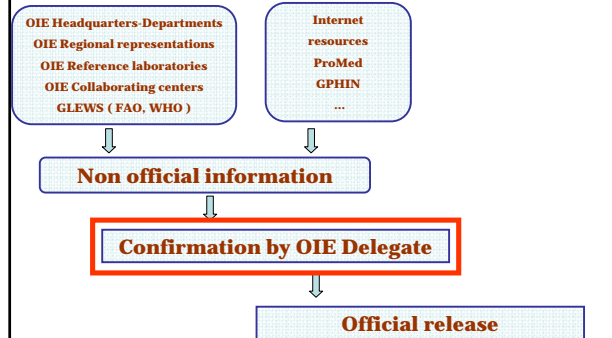
Source: World Organisation for Animal Health (OIE) Animal Health Information Department

### Number of tracked events by disease in 2009

- Total = 124
- Contact Delegate = 98



### Main Steps of Active Search and Verification of non official Information



### WAHIS EVOLUTION - WAHIS 2

### Recent crises: need to adapt to the situation - notification of diseases in wild animals

*The OIE is aware of the sensitivity of WAHIS data and the possible consequences of reporting diseases in wild animals by putting unjustified trade barriers. This may have sometimes a side effect of countries not notifying on diseases observed in wild species, which limit transparency*

*Better understanding of disease situation in both domestic and wild animals, better risk analysis for importing countries and less unjustified trade barriers.*

### Among the new functionalities

- Differentiated registration and display for the **occurrence code** between domestic animals and wild animals (already implemented starting from 2009)
- To generate **two completely separate six-monthly reports** one for terrestrial and one for aquatic animals: reason better management: Members can provide available information without blocking the submission process) (starting from 2010).
- Improvement of the **management of periodicity of reporting diseases** within the six-monthly period (for an ongoing six-month period): send monthly information for a selected number of diseases that are known to be present, which could be validated and made public on monthly basis, without submitting the whole report. The rest of the report will be completed at the end of the period) (starting from 2010)

### Among the new functionalities

- For wildlife, WAHIS will offer a **list of known susceptible species for terrestrial animals** in order to report the correct host animal (starting from 2010);
  - by family name;
  - by scientific name (*Latin name*);
  - by common name (in English, French and Spanish).
- The system will allow the possibility **to add in a box free text**, another species (if it is not on the list) (starting from 2010);
- There will be a **different interface than WAHID in the OIE web site** to display data on non-OIE listed disease in wildlife (starting from 2010).



## New functionality (1) – WAHIS 2009

### Occurrence code between domestic and wild animals

Each country has to indicate the occurrence codes for each OIE-listed disease during the reporting period by category of domestic and wild species

**Codes indicating disease presence in Domestic Species and / or in Wild Species**  
 + Positive occurrence of the disease  
 +() Positive occurrence of the disease limited to one or more zones of the country

**Codes indicating the presence of the infection/infestation in Domestic Species and / or in Wild Species**  
 +? Identification of the presence of infection/infestation

**Codes indicating disease absence in domestic Species and / or Wild Species**  
 - Negative occurrence of the disease



## New functionality (1) – WAHIS 2009

### Occurrence code between domestic animals and wild animals

#### Other codes in Domestic and/or in Wild Species

? Presence of the disease suspected but not confirmed  
 ... No information available  
 0000 Disease never reported

#### For Disease never reported (in both Domestic and Wild Species):

It is not accepted to notify the disease as never reported if it was already reported in domestic species or in wild animals and vice versa. This occurrence code is used for both categories of species.



## New functionality (1) – WAHIS 2009

The system offers a double line to register different occurrence codes if relevant between domestic and wild species. Several options are available:

- First option: no information (domestic and/or wild).
- Second option: diseases "never reported" (in both domestic and wild species).
- Third option: disease "absent in both" (domestic and wild species).
- Fourth option: disease "absent in domestic" and "present in wild species".
- Fifth option: disease "absent in wild" and "present in domestic species".
- Sixth option: disease "present in both" (domestic and wild species) with the same occurrence code.
- Seventh option: disease "present in both" (domestic and wild species) with different occurrence codes eg. Zone, country.



## New functionality (1) – WAHIS 2009

### Some examples:

Disease Name	Species	Disease and Infection Absent			Disease and/or Infection Present			
		No information	Never Reported	Not reported in this period	Suspected	Infection/Infestation (without clinical signs)	Clinical Disease	Disease in one or more zones
Foot and mouth disease	Domestic	<input type="radio"/>	<input type="radio"/>	<input type="radio"/>	<input type="radio"/>	<input type="radio"/>	<input type="radio"/>	<input type="radio"/>
	Wild	<input type="radio"/>	<input type="radio"/>	<input type="radio"/>	<input type="radio"/>	<input type="radio"/>	<input type="radio"/>	<input type="radio"/>
Vesicular stomatitis	Domestic	<input type="radio"/>	<input type="radio"/>	<input type="radio"/>	<input type="radio"/>	<input type="radio"/>	<input type="radio"/>	<input type="radio"/>
	Wild	<input type="radio"/>	<input type="radio"/>	<input type="radio"/>	<input type="radio"/>	<input type="radio"/>	<input type="radio"/>	<input type="radio"/>
Rift Valley fever	Domestic	<input type="radio"/>	<input type="radio"/>	<input type="radio"/>	<input type="radio"/>	<input type="radio"/>	<input type="radio"/>	<input type="radio"/>
	Wild	<input type="radio"/>	<input type="radio"/>	<input type="radio"/>	<input type="radio"/>	<input type="radio"/>	<input type="radio"/>	<input type="radio"/>
Bluetongue	Domestic	<input type="radio"/>	<input type="radio"/>	<input type="radio"/>	<input type="radio"/>	<input type="radio"/>	<input type="radio"/>	<input type="radio"/>
	Wild	<input type="radio"/>	<input type="radio"/>	<input type="radio"/>	<input type="radio"/>	<input type="radio"/>	<input type="radio"/>	<input type="radio"/>
Anthrax	Domestic	<input type="radio"/>	<input type="radio"/>	<input type="radio"/>	<input type="radio"/>	<input type="radio"/>	<input type="radio"/>	<input type="radio"/>
	Wild	<input type="radio"/>	<input type="radio"/>	<input type="radio"/>	<input type="radio"/>	<input type="radio"/>	<input type="radio"/>	<input type="radio"/>
Avian influenza	Domestic	<input type="radio"/>	<input type="radio"/>	<input type="radio"/>	<input type="radio"/>	<input type="radio"/>	<input type="radio"/>	<input type="radio"/>
	Wild	<input type="radio"/>	<input type="radio"/>	<input type="radio"/>	<input type="radio"/>	<input type="radio"/>	<input type="radio"/>	<input type="radio"/>
Echinococcosis/hyalidosis	Domestic	<input type="radio"/>	<input type="radio"/>	<input type="radio"/>	<input type="radio"/>	<input type="radio"/>	<input type="radio"/>	<input type="radio"/>
	Wild	<input type="radio"/>	<input type="radio"/>	<input type="radio"/>	<input type="radio"/>	<input type="radio"/>	<input type="radio"/>	<input type="radio"/>

## New functionality (1) – WAHIS 2009

Some examples from the review report page:

OIE Listed disease	occurrence	Serotype (s)	New outbreaks	Total outbreaks	Species	Control Measures	Routine Vaccinated	Measuring units	Susceptible	Cases	Deaths	Death rate	Slaughtered	Vooc
Foot and mouth disease (Domestic and Wild)	+	No	2	2	bov	*		Animals	100	100	0	100	0	
					buf	*		Animals						
					cap	*		Animals						
					alc	*		Animals						
Foot and mouth disease (Domestic)	+	No	5	5	bov	*		Animals	20	10	2	18	0	
					buf	*		Animals						
					cap	*		Animals						
					alc	*		Animals						
Foot and mouth disease (Wild)	+	No	1	1	fau	*-Q1		Animals	3	3	0	3	0	

1<sup>st</sup> Example: Foot and mouth disease present in the country for domestic and wildlife species with the same occurrence code

2<sup>nd</sup> Example: Foot and mouth disease present in the country for domestic and wildlife species with different occurrence code



## New functionality (2) – starting from 2010

### Two completely separate six-monthly reports

One for

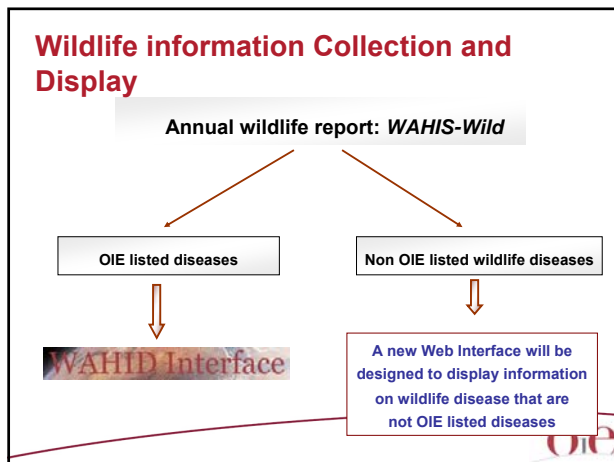
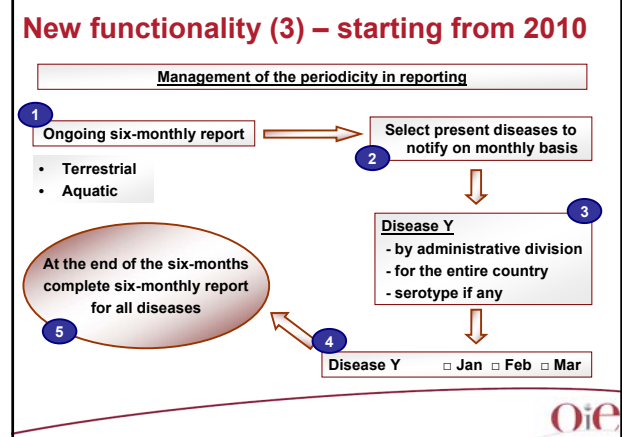
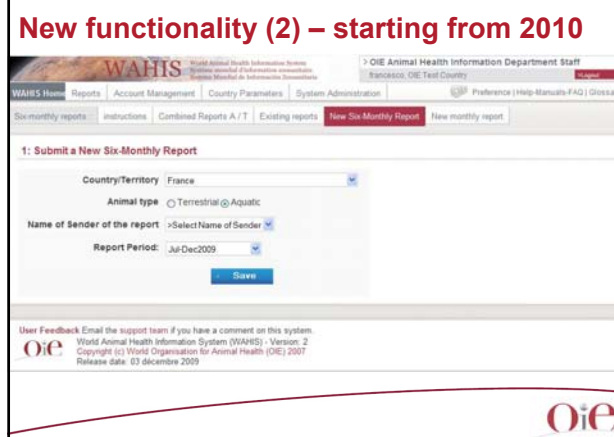
Terrestrial animals

One for

Aquatic animals

The OIE will receive from a given year 4 six-monthly reports (2 for terrestrial animals and 2 for aquatic animals)





### REGIONAL INFORMATION SYSTEMS: THE OIE STRATEGY

### WAHIS Regional Core: first option

- For disease control purposes, the OIE offers the possibility for **groups of members/Regional Organisation**, and for priority endemic diseases covered by a **regional control programme**,

... to **provide and share** more information than the minimal information required by the OIE for these endemic diseases (e.g. outbreak by outbreak).

### WAHIS Regional Core: first option

- A regional core enables members to enter data once for different purposes : meet the objectives of the regional control programme, while respecting their reporting obligations towards the OIE.
- This approach avoids discrepancies between processed data posted on the OIE website and data used by the regional control programme (and its regional website).

### WAHIS Regional Core: first option

- Non-confirmed information (rumours or suspicions of disease outbreaks) could be shared between participating Members only.
- Only confirmed information will be transferred to the OIE and –through the OIE- to the rest of the world.
- Such regional databases can be hosted free of charge by the OIE central servers (ensure sustainability)



### WAHIS Regional Core: second option

- If the OIE collected data as part of the six-monthly reporting procedure (by monthly breakdown), is sufficient for a region, then an agreement could be signed between the regional organisation and the OIE.
- The OIE will provide data on these priority diseases for Members of the region to be analysed, displayed on the regional web site or be provided in different types of publications such a bulletin to be published inside the region, etc.



### WAHIS Regional Cores

- Regional Agreement signed between the OIE and:
  - Organismo internacional regional de sanidad agropecuaria (OIRSA)
  - Secretariat of the Pacific Community (SPC)
  - Network of Aquaculture Centres in Asia-Pacific (NACA)

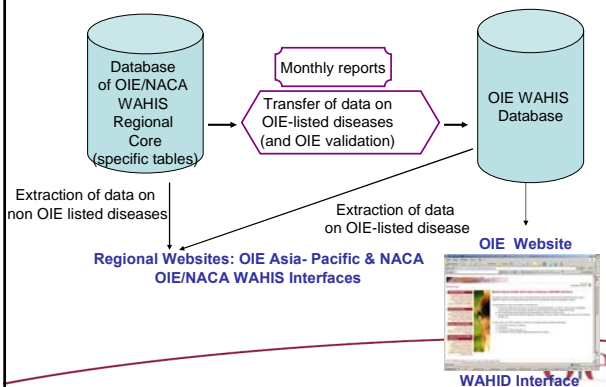


### OIE/NACA WAHIS Regional Core

- Concept note project was designed then discussed during the OIE/NACA Regional Workshop on Aquatic Animal Health held in Bangkok, Thailand, late March 2008
- Official agreement designed then signed by the DGs of OIE and NACA in April 2008
- The development of this Regional Core has been included as a component of the Development of WAHIS 2 that started in May 2009 and is now being tested



### Data Transfer for OIE/NACA WAHIS Regional Core



WAHID Interface

### Outputs - Websites


- OIE listed diseases: WAHID
- OIE listed diseases and Disease of regional interest
  - OIE Asia-Pacific (already described the design and content of the website and identified resources, need to start the development)
  - NACA (ongoing)
    - Which design to use? How to display data (monthly, quarterly to keep the spirit of the quarterly report? etc.



## Discussion!

If you want to subscribe to the OIE-Info distribution list to receive OIE's Alerts, you can do it from:

[http://www.oie.int/eng/info/en\\_listserv.htm](http://www.oie.int/eng/info/en_listserv.htm)

RSS Feeds are available too  and you can choose to receive alert messages on aquatic animal diseases only

The OIE logo consists of the letters 'OIE' in a stylized, serif font. The 'O' and 'I' are connected, and the 'E' is separate. The logo is positioned at the bottom right of the text box, with a thin red curved line above it.