

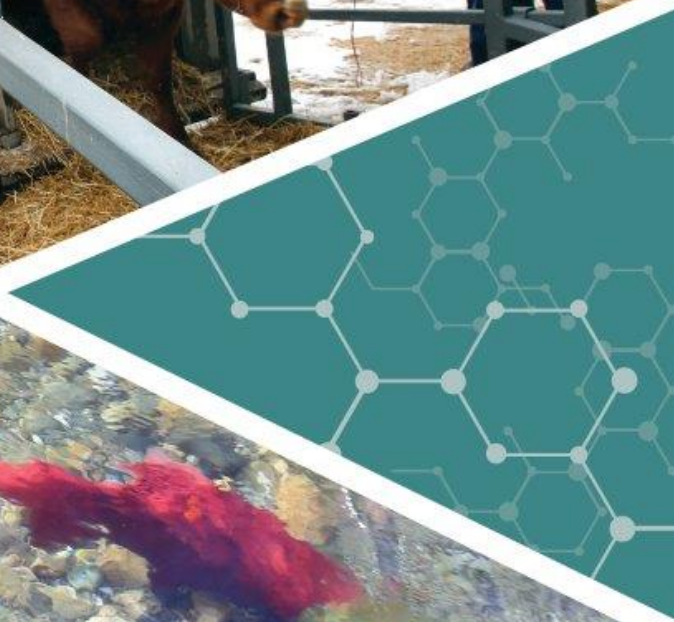


Break-out activity 2

Preparing an import risk analysis

Dr Noel Murray

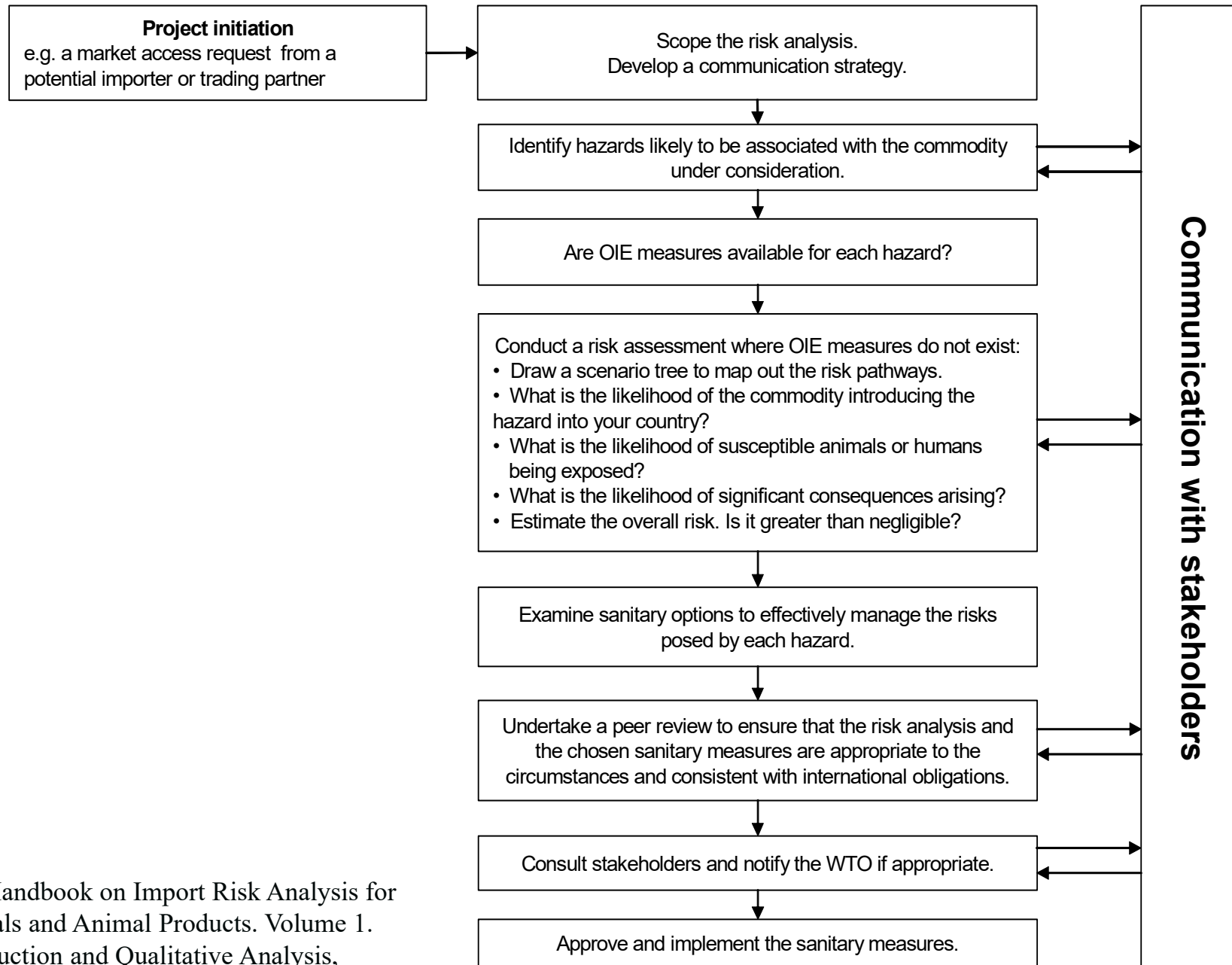
22nd March, 2018



Objectives

- to re-inforce the concepts discussed by working through the steps involved in an import risk analysis
 - break-out into groups
 - each group to appoint a scribe and spokesperson and report back on progress
 - group discussion

A flow chart for a risk analysis



Exercise

- You have received a request to import ...
- What questions do you need to ask when scoping the risk analysis?
 - Define the purpose of the risk analysis?
- Draw up a list of potential hazards
 - Outline how you will develop a list
 - Where can you obtain information
 - What criteria do you need to consider?
- Choose 3 hazards and discuss the rationale for including them on the list.

Exercise continued ...

- Select one of your potential hazards
 - Map out a risk pathway tree for the entry and exposure assessments.
 - What factors do you need to consider?
 - Entry assessment
 - Exposure assessment
 - Give some examples

Exercise continued ...

- What are some of the potential consequences associated with your chosen hazard?
 - What factors do you need to consider?
 - Give some examples.
- Identify a couple of potential “outbreak” scenarios.
 - Estimate the likely magnitude of the consequences for each one at various levels, for example
 - Farm
 - District
 - Region
 - National

Exercise

- Evaluate
 - the likelihood of the entry, exposure, establishment or spread of the hazard
 - an estimate of the likely magnitude and likelihood of biological, environmental and economic consequences for your chosen hazard
- Can sanitary measures be justified?
- What options are available to manage the risk?
 - How are these related to the risk assessment?
 - What factors do you need to consider when developing sanitary measures

To help with identifying risk pathways leading to...

- a commodity harbouring the hazard when imported
- susceptible animals and/or humans being exposed
- potential “outbreak” scenarios
- it can be helpful to draw a scenario tree

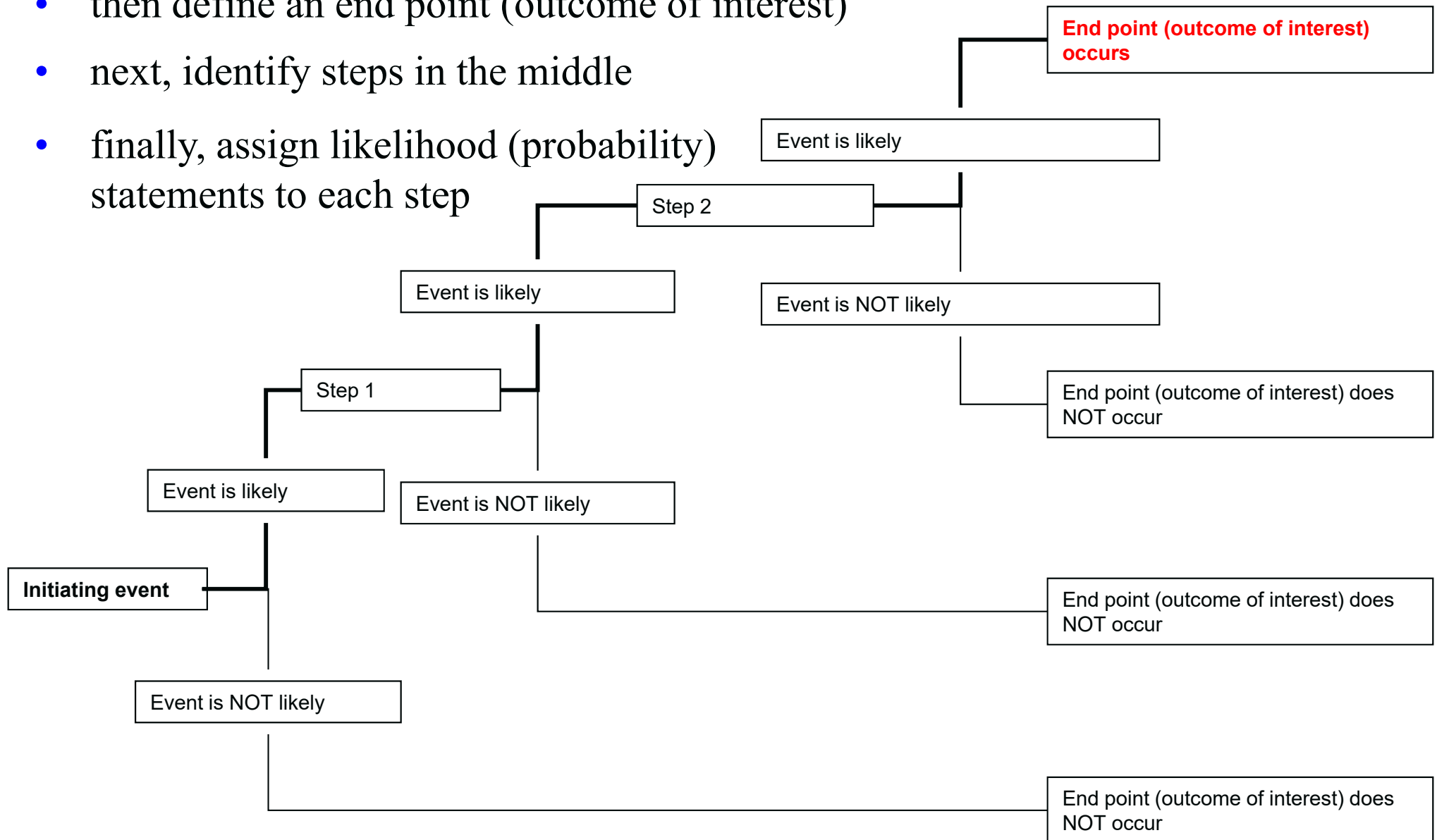
A scenario tree provides a useful conceptual framework to ...

- identify and convey the range and types of pathways considered in a simple, transparent and meaningful fashion
- identify information requirements
- clarify ideas and understanding of the problem
- ensure a logical chain of events in space and time
- assist with identifying sanitary measures
- underpin the framework for a quantitative model and ensure the correct probability estimate is calculated
- assist with communicating the structure and results of a risk analysis

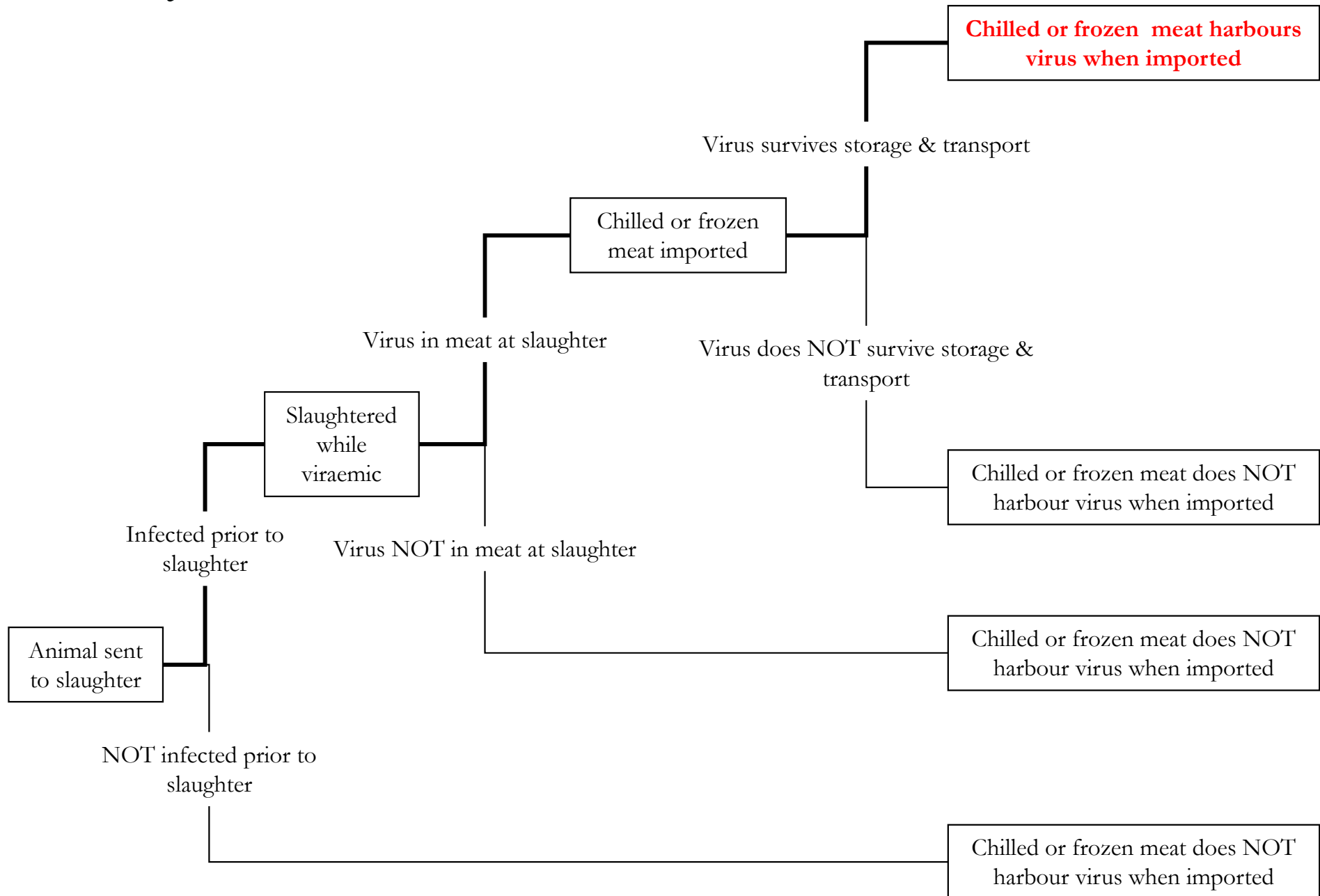
A scenario tree is also known as a probability or event tree

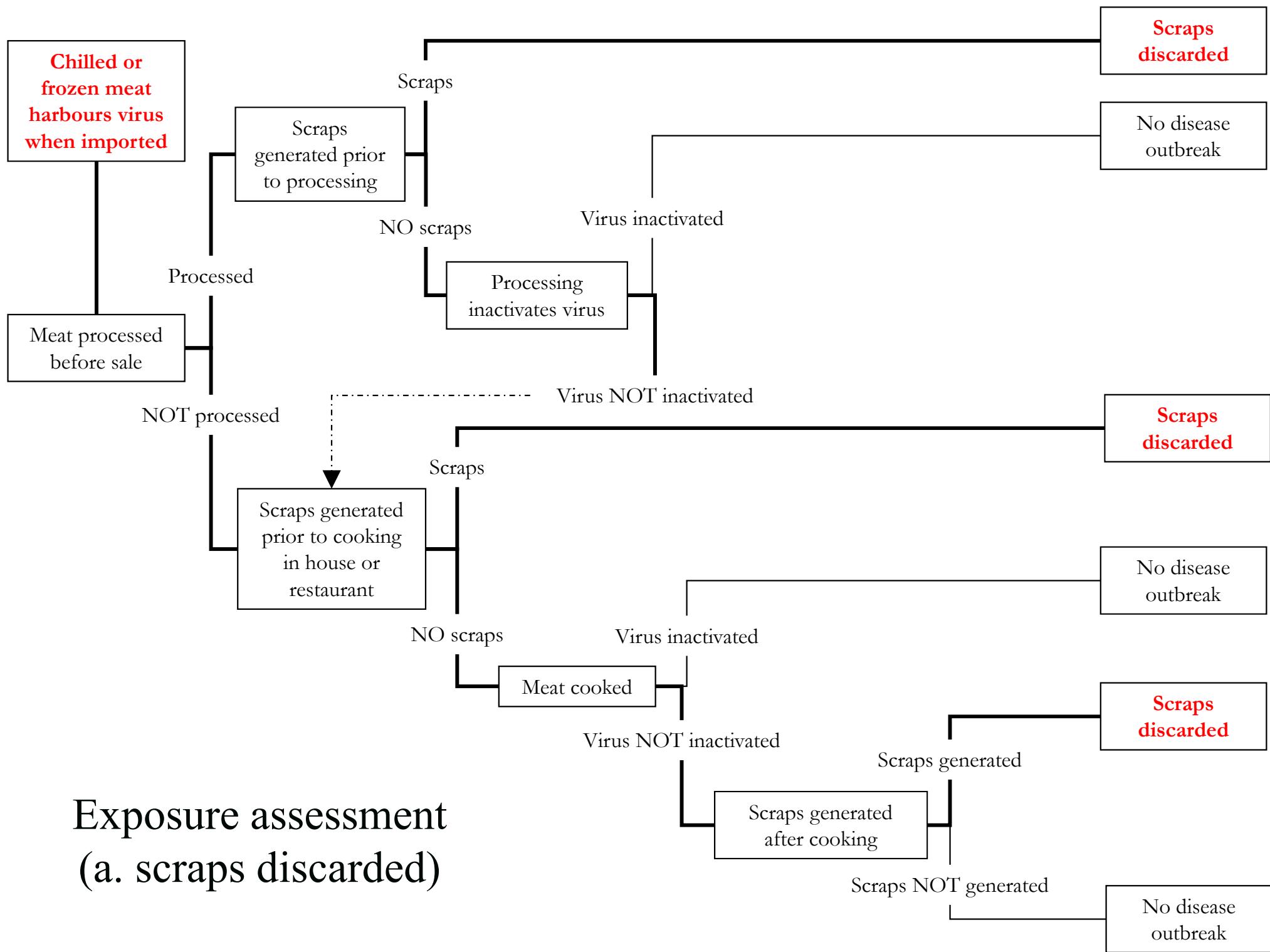
A scenario tree starts with an initiating event ...

- then define an end point (outcome of interest)
- next, identify steps in the middle
- finally, assign likelihood (probability) statements to each step



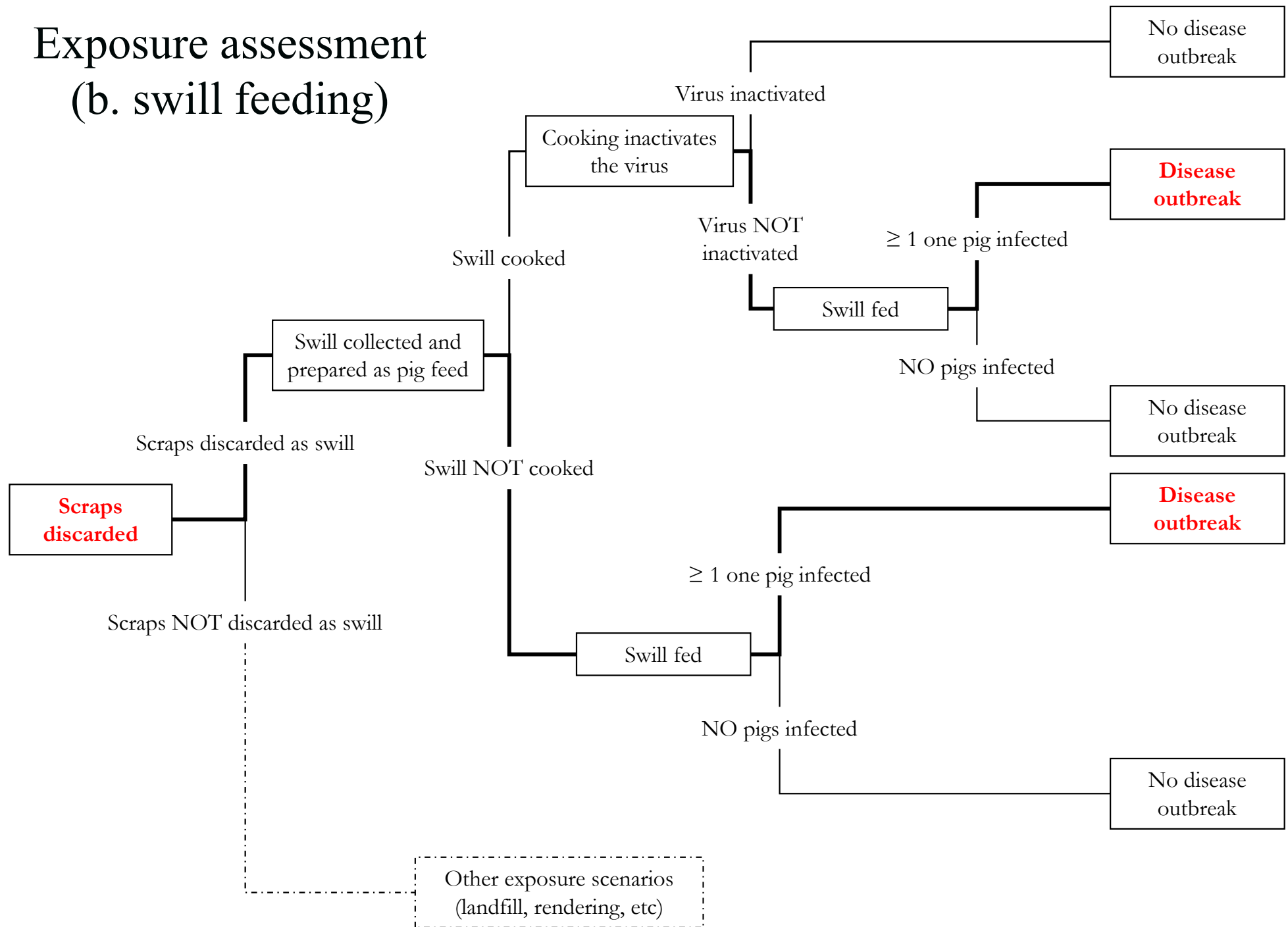
Entry assessment



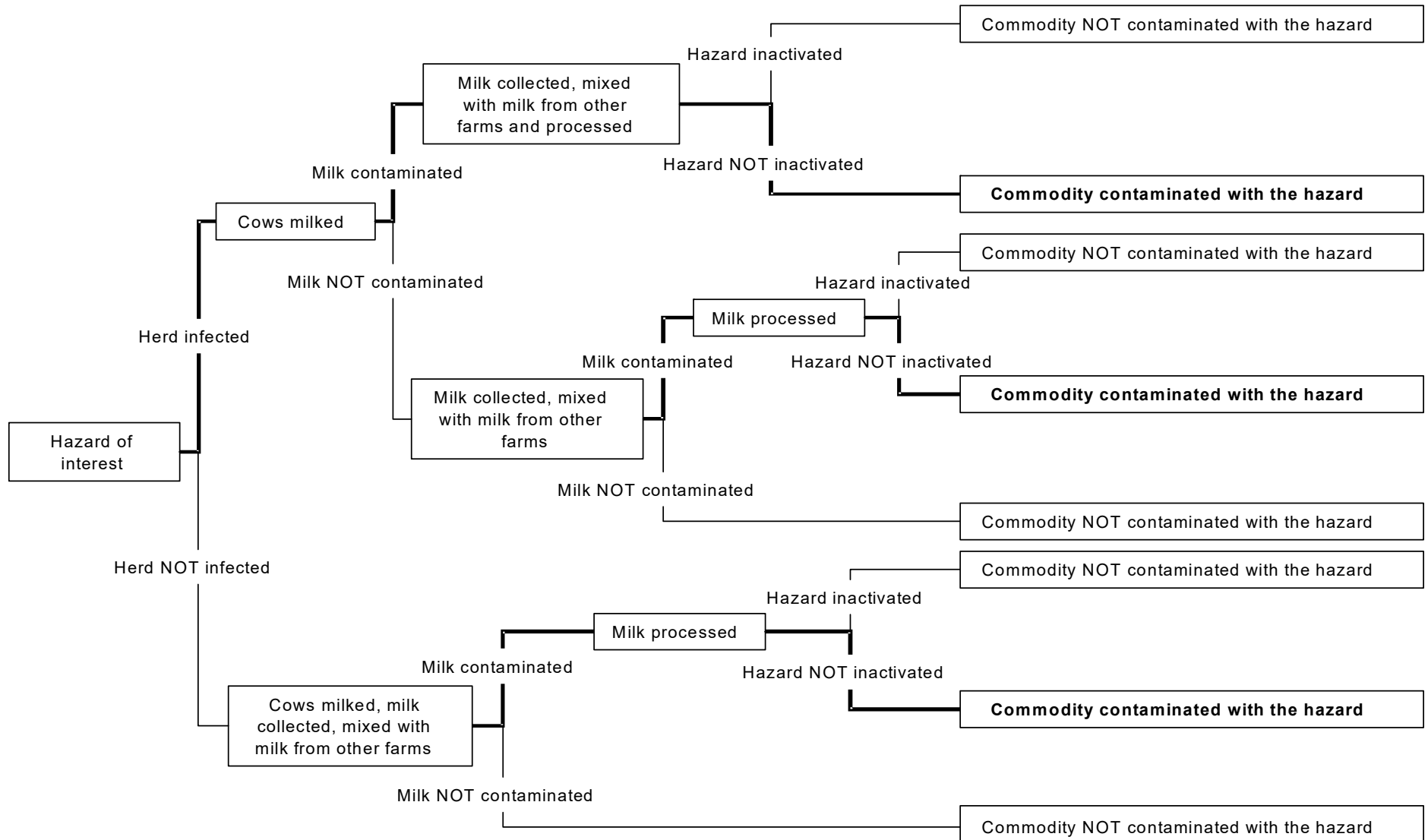


Exposure assessment
(a. scraps discarded)

Exposure assessment (b. swill feeding)



A scenario tree for dairy products outlining some pathways leading to contamination of an imported commodity (entry assessment)



Thankyou

Questions or comments?