

OIE Regional Seminar for OIE Focal Points for Aquatic Animals  
Grahamstown  
19-23 September 2011

**OIE Reference Laboratories,  
Collaborating Centres,  
and Laboratory Twinning**

Gillian Mylrea

**OIE Reference Laboratories/ Collaborating Centres**

- Part of OIE's scientific network, providing expertise and support to OIE Members;
- designated to pursue all the scientific and technical problems relating to a named disease or specific topic;

**Mandate of an OIE Reference Laboratory  
(disease based)**

- Centre of expertise and standardisation – develop and uphold OIE Standards
- Production and dissemination of reagents
- Technical advice
- Diagnostic services
- Confirmatory testing, pathogen isolation and characterisation - report positive findings to the international community
- Develop new diagnostic tests
- Training
- Publish and disseminate useful information

**The OIE's scientific excellence**

**Reference Laboratories May 2011**

**OIE-Reference Laboratories**

- no OIE-reference labs
- 1 or 2 OIE-reference labs
- 3 or 4 OIE-reference labs
- 5 to 10 OIE-reference labs
- more than 11 OIE-reference labs

- 190 Reference laboratories
- 101 diseases or topics (33 aquatic diseases)
- 161 experts (team leaders)

Copyright © 2010, Animal Health Information Department - OIE

**OIE REFERENCE LABORATORIES FOR AQUATIC DISEASES**

**Legend**

- OIE reference laboratories for aquatic diseases

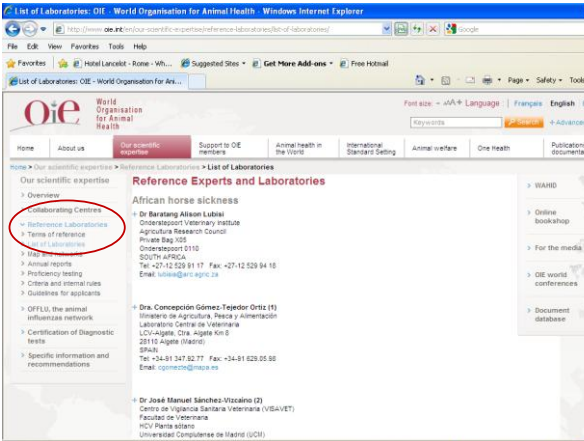
**Aquatic OIE Reference Laboratories**

Currently:

- 27 RLs for the OIE listed aquatic animal diseases (25 of the 26);
- 10 RLs for 12 de-listed diseases.

- each RL is under the guidance of an expert whose competence is recognised internationally;
- expert is approved by the OIE World Assembly of Delegates;
- expert must be a leading and active researcher;
- expert must submit an Annual Report of RL activities to the OIE;
- RL must notify the OIE if the expert leaves.

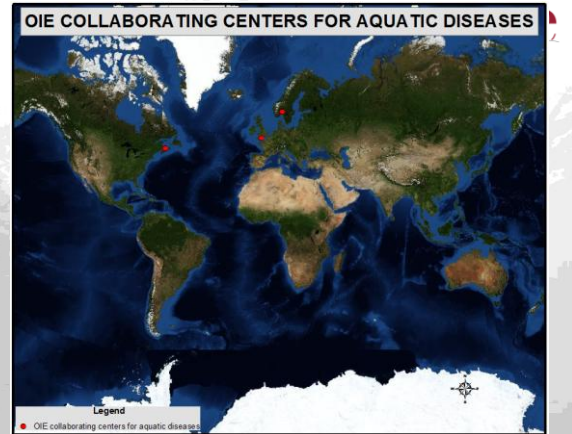
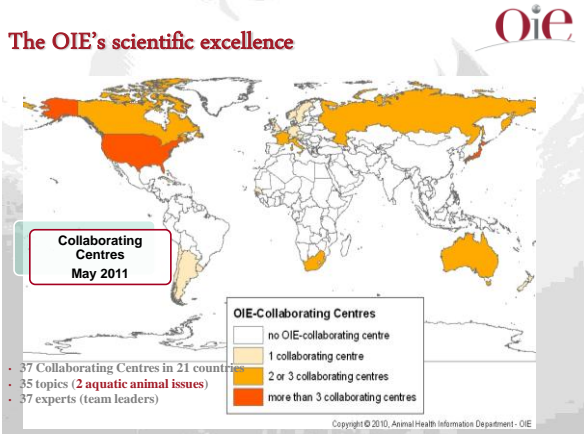
If the RL confirms a positive for OIE listed diseases, the RL should immediately inform the OIE Delegate of the Member as well as the OIE Headquarters



## Mandate of an OIE Collaborating Centres (competence based)

- Centre of research, expertise, standardisation and dissemination of techniques
- Provide technical advice and training
- Develop new techniques and procedures
- Publish and disseminate useful information
- Place expert consultants at the disposal of OIE

## The OIE's scientific excellence



## OIE Collaborating Centres for Aquatic Animal Diseases

### OIE Collaborating Centre for Information on Aquatic Animal Diseases

The Centre for Environment, Fisheries & Aquaculture Science (CEFAS), UK

### OIE Collaborating Centre for Epidemiology and Risk Assessment of Aquatic Animal Diseases

Canada and Norway – adopted at GS in May 2010

Contact details of CCs are listed on the OIE website [www.oie.int](http://www.oie.int)

## Laboratory Twinning



Sustainable enhancement of capacity and expertise by supporting a link between an OIE RL or CC (parent) and a national laboratory (candidate)

## Aims and objectives - expertise

- To build scientific communities and improve compliance with OIE standards
- Improved access to high quality diagnostics and technical assistance for more OIE Member
- Eventually for some Candidates to apply for 'reference' status
- To help countries to enter scientific debate on an equal footing with others

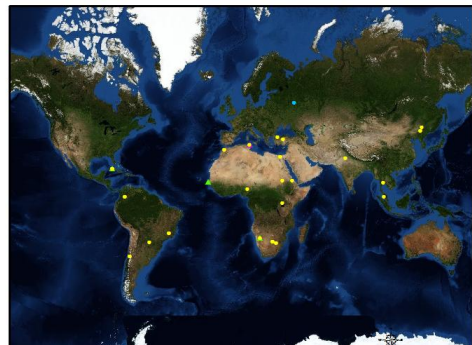
## Aims and objectives - networking

- Extend the OIE network of expertise to provide better global geographical coverage for priority diseases in priority areas
- To form long and lasting links between the two institutes
- Strengthen global disease surveillance networks
- To strengthen national scientific networks

## Scope

- Project length is 1-3 years
- For OIE listed diseases or topics
- Focus on expertise
- No funding for hardware or upgrading of facilities
- Ultimate aim to reach OIE reference status

TWINNING : CANDIDATE LABORATORIES AND COLLABORATING CENTERS



## Twinning projects in aquatic animals

- Underway:  
Canada and Chile (ISA)
- Approved:  
Thailand and Zambia (EUS)

## Twinning Guide and Project Template/Contract

- Background
- How to apply/proposal
- Basic project management
- Project plan (objectives, stages)
- Regular monitoring
- Facilitates efficient applications
- Formalises agreement



Available on OIE website at [www.oie.int](http://www.oie.int)

