

RVF outbreaks in Somalia

- Following El-Nino related event in 1997 – 98 in the Region.
- In Southern Somalia 100 human cases suspected and one confirmed (WHO/CDC), report of high abortion rate in small ruminants population following the massive RVF epizootic in N.E. Kenya in 2006-2007



RVF Surveillance in Somalia

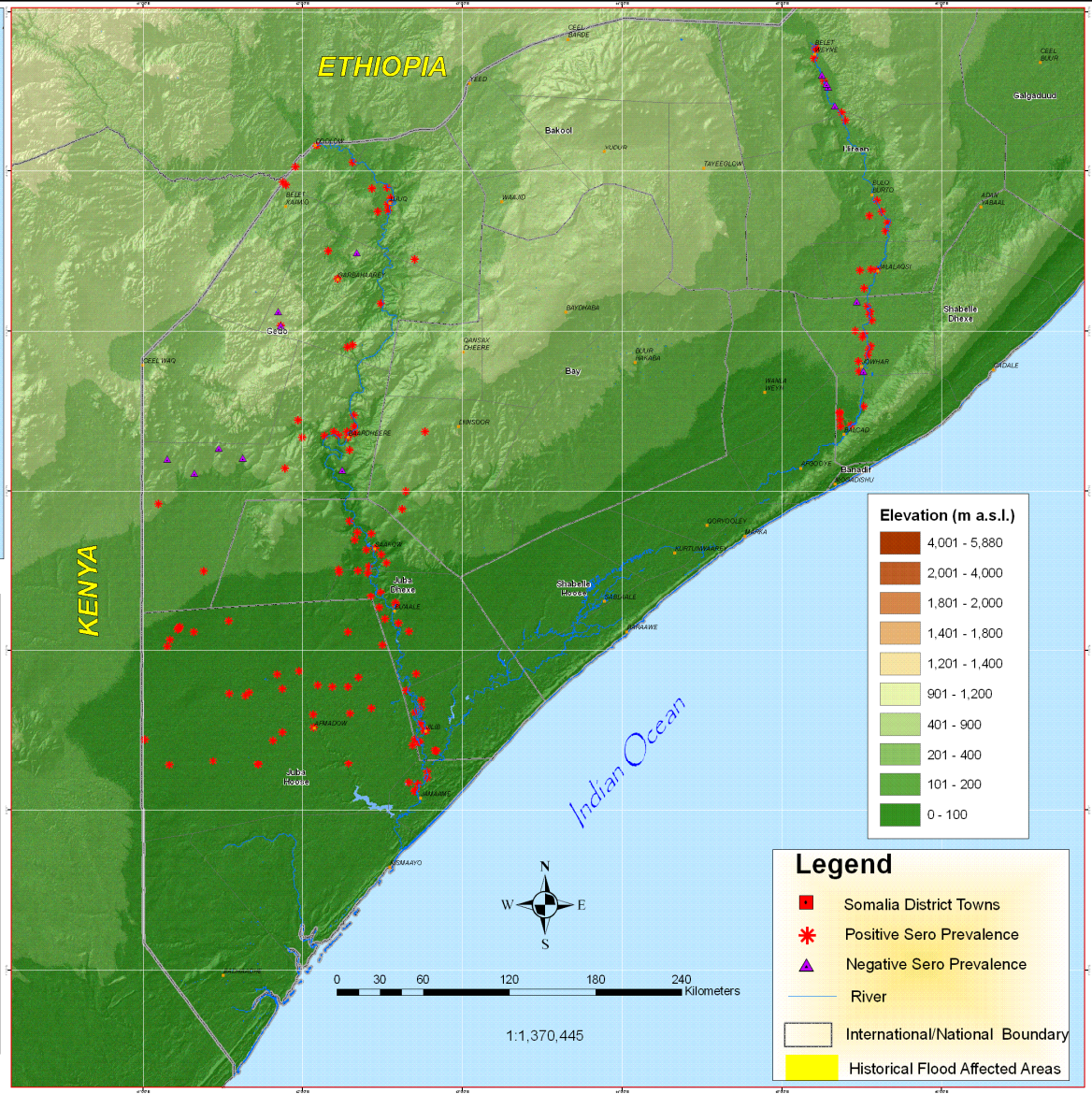
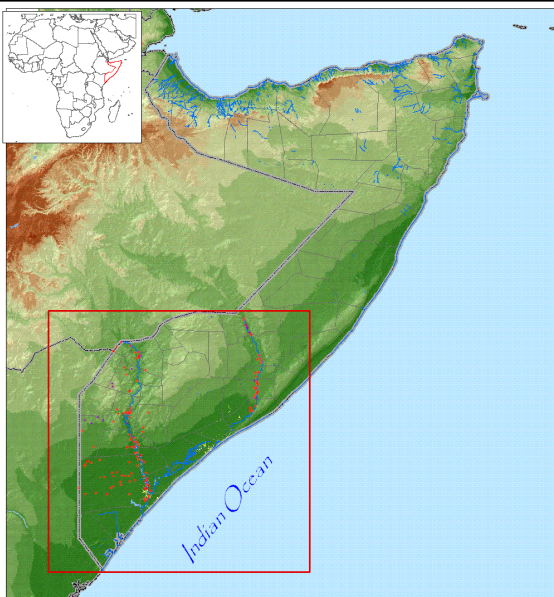
- **2004** - Targeted survey in sero-positive sites in Central-South Somalia - Somali component of PACE Project
- **January 2007** - Targeted survey in Afmadow District (South) following RVF outbreaks in north-eastern Kenya - SAHSP (Somali Animal Health Service Project)
- **2007** – Targeted survey in Central and Southern Somalia - SAHSP



Summary results from 2004 onward

Region	Sheep Prevalence (%)	Goat Prevalence (%)	Targeted sites	Sites sampled
Central Somalia	15.3	5.7	284	270
Southern Somalia	26.6	6.3	348	244





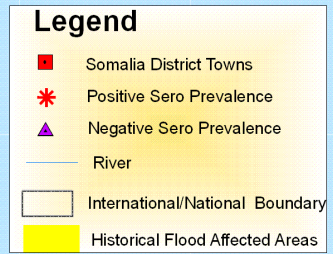
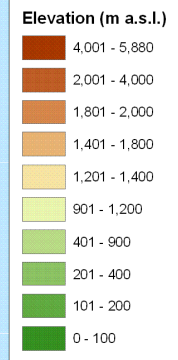
**TARGETED RIFT VALLEY
FEVER SURVEY RESULTS 2007**

Data Sources : NASA-SRTM(90m), SWALIM, Africa Water Resources Database, FAO Somalia, SAHSP
2002-2006 Flood extent (Dartmouth Flood Observatory)
Map Projection: Geographic Coordinates, WGS 84 datum

Map Production: Somalia Water and Land Information Management Project (SWALIM)
SWALIM is implemented by the United Nations Food & Agriculture Organization and
funded by European Commission with 5% co-funding provided by UNICEF

Map Reference: RVF-SOUTHERN-CENTRAL-SOM-2007-20080226-NAT-DEM-A1-001
For copies of digital data please contact enquiries@faoswalim.org

The boundaries and names on this map do not imply official endorsement or acceptance by the United Nations



Climatic indicators based EMPRES release

- September 2008 FAO-EMPRES release - alert on prediction of increased precipitation and possible outbreaks of RVF in the greater Eastern Africa region

